

A-26

PLAN TO ACCOMPANY
BYLAW N° 2780 OF THE CITY OF PRINCE GEORGE
DEDICATING AS ROAD A PART OF
S.W. 1/4 DISTRICT LOT 4050
CARIBOO DISTRICT - BRITISH COLUMBIA

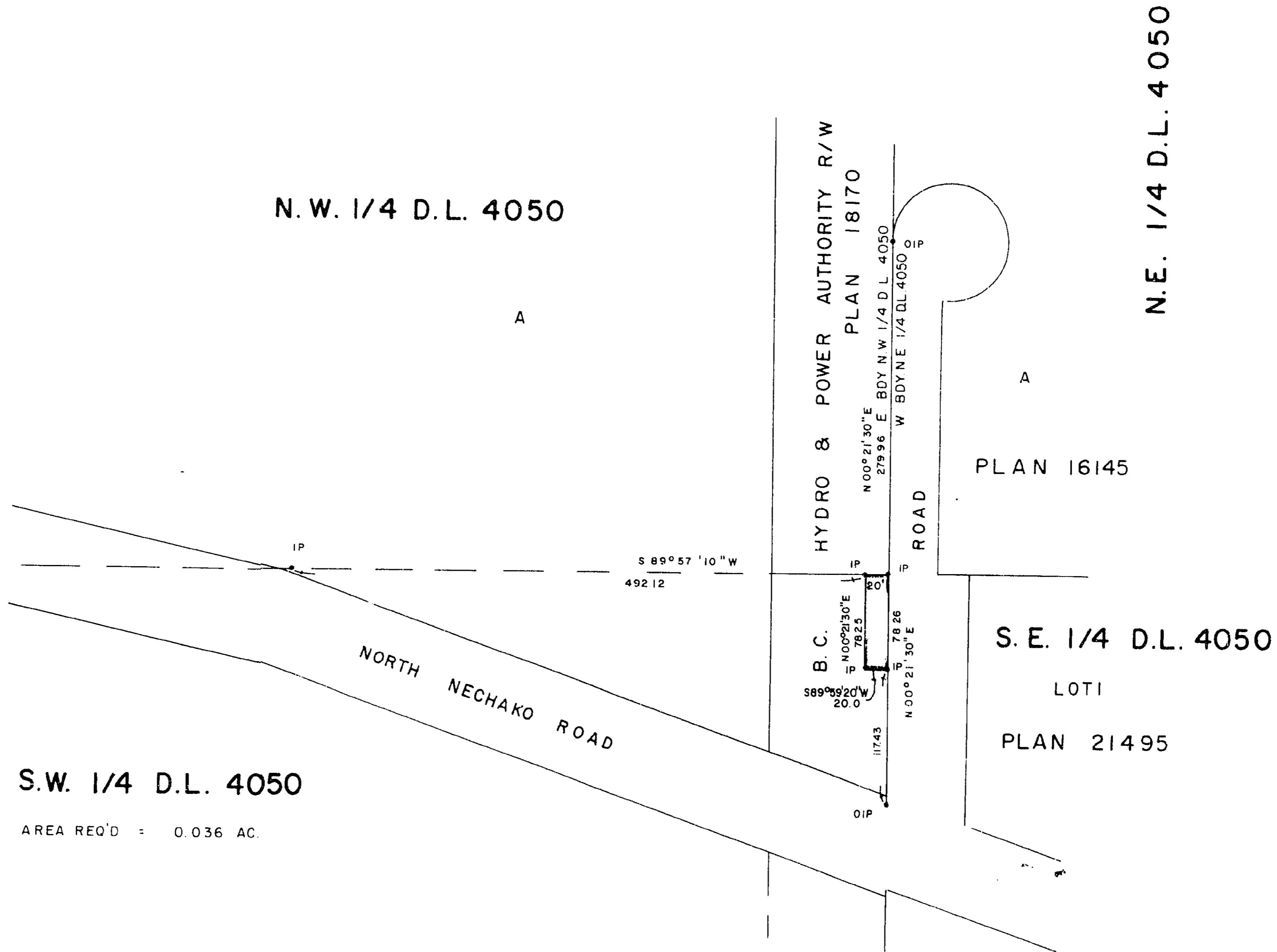
SCALE: 1" = 100'

NOTE: Bearings are astronomic, derived from the east boundary of S.W. 1/4 D.L. 4050, as shown on Plan 16145.

LEGEND: • OIP denotes an old iron pin found.
• IP denotes an iron pin set.

PLAN N° 22431
Deposited in the Land Registry
Office at Prince George, B.C. this
15 day of Dec., 1975

E. T. Schooner
Registrar



I, DONALD A. DUFFY of the City of Prince George, a British Columbia Land Surveyor, make oath and say that I was present at and did personally superintend the survey represented by this plan and that the survey and plan are correct. The said survey was completed on the 30th day of JUNE, 1975.

[Signature]
B.C.L.S.

Sworn before me this 17th day of JULY, 1975.

[Signature]
A Commissioner for taking Affidavits for British Columbia.

SUPERIOR GRAVEL CO. LTD.

City of Prince George
[Signature]
City Clerk

Approved as to dedication of roads.
B.C. HYDRO & POWER AUTHORITY

[Signature]
Director
[Signature]
Associate Secretary
Approved under the Land Registry Act
this 30th day of JULY, 1975

[Signature]
Approving Officer, City of Prince George

This plan lies within the Fraser-Fort George Regional District.