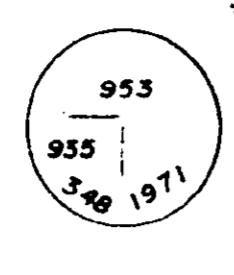


E. S. Schooley  
REGISTRAR

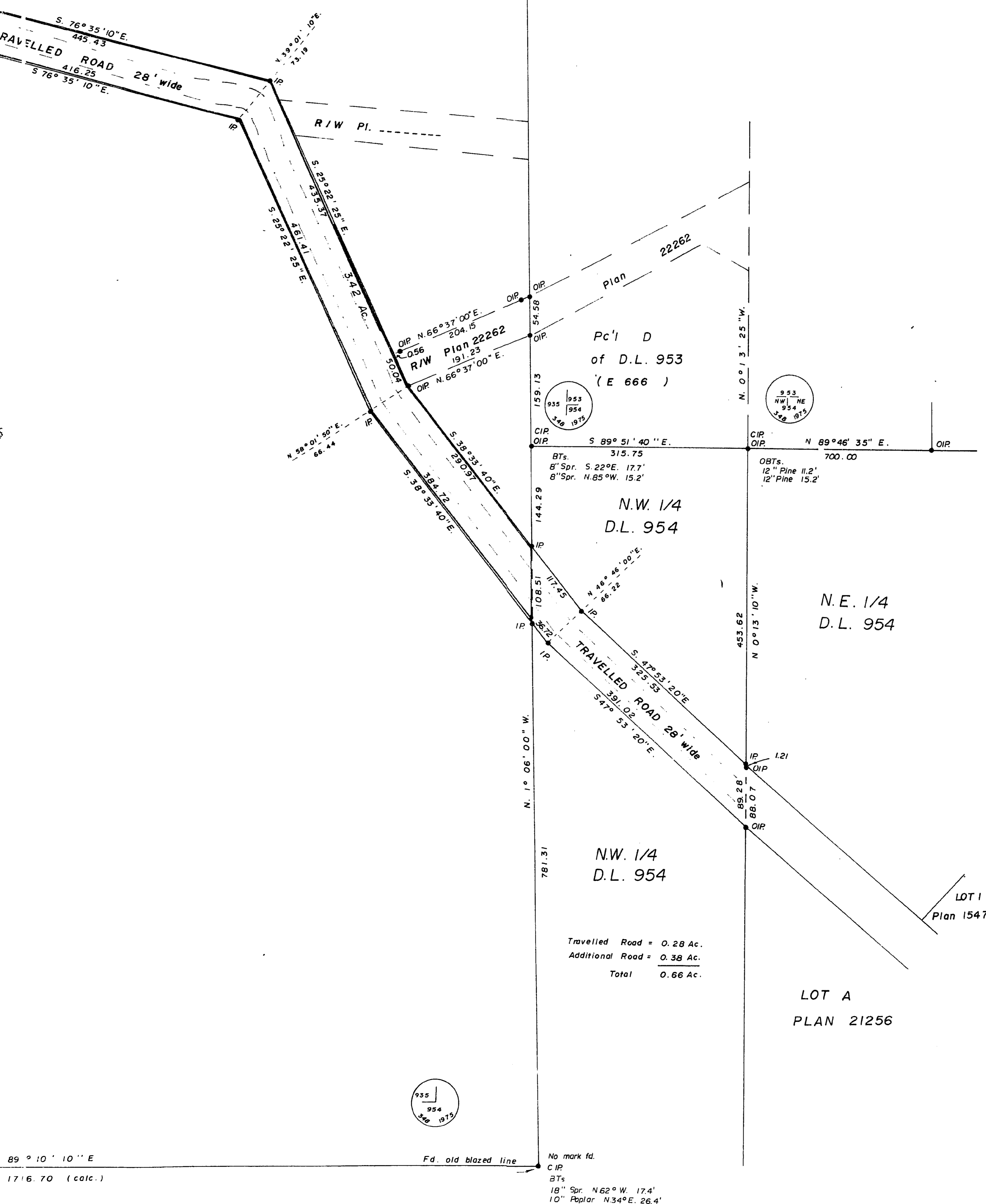
N 89° 10' 10" E.  
1711.06



O.C.P.  
O.B.T.s.  
10" Pine N. 53° W. 15.8'  
10" Pine N. 36° E. 13.9'

D. L. 935

PLAN TO ACCOMPANY BY-LAW No. 2796  
CITY of PRINCE GEORGE,  
HIGHWAY ACQUISITION, DEDICATION,  
and ESTABLISHMENT of ROADS,  
UNDER THE MUNICIPAL ACT  
IN DISTRICT LOT 935, CARIBOO DISTRICT.  
SCALE : 1" = 100'



Travelled Road = 0.28 Ac.  
Additional Road = 0.38 Ac.  
Total 0.66 Ac.

BEARINGS ARE ASTRONOMIC DERIVED FROM  
OBSERVATIONS ON THE AT C.N.R. AND ROAD  
CROSSING

- IP. . . . . STANDARD IRON POST.
- CIP. . . . . CAPPED IRON POST.
- o . . . . . DENOTES "OLD"
- fd. . . . . DENOTES "FOUND"

I, V. BARTELL, OF THE CITY OF PRINCE GEORGE,  
BRITISH COLUMBIA LAND SURVEYOR, MAKE OATH  
AND SAY THAT I WAS PRESENT AT AND DID  
PERSONALLY SUPERINTEND THE SURVEY REPRE-  
SENTED BY THIS PLAN, AND THAT THE SURVEY  
AND PLAN ARE CORRECT.  
THE SAID SURVEY WAS COMPLETED ON  
THE 16th DAY OF September 1975.

V. Bartell  
V. BARTELL, B.C.L.S.

APPROVED UNDER THE LAND REGISTRY ACT  
THIS . . . . . DAY OF . . . . . 1975.

SWORN BEFORE ME AT PRINCE GEORGE  
THIS 18th DAY OF September 1975.

APPROVING OFFICER

A COMMISSIONER FOR TAKING AFFIDAVITS  
FOR BRITISH COLUMBIA.

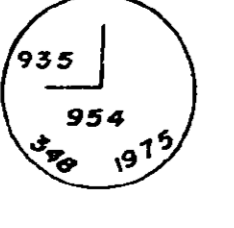
APPROVED AS TO DEDICATION OF ROADS  
(PLAN 22262)  
CITY OF PRINCE GEORGE.

THIS PLAN LIES WITHIN THE FRASER FORT-  
GEORGE REGIONAL DISTRICT.

Mc WILLIAM, WHITE, GOBLE, & ASSOCIATES,  
B. C. L. LAND SURVEYORS,  
PRINCE GEORGE - KAMLOOPS - SMITHERS.

REF. No. 75100-8

89° 10' 10" E  
1716.70 (calc.)



No mark fd.  
C.I.P.  
B.T.s.  
18" Spr. N 62° W. 17.4'  
10" Poplar N 34° E. 26.4'

A-26

D.L. 2929

D.L. 953

N 89° 10' 10" E.  
1711.06

LOT 1  
Plan 10507

D.L. 935

D.L. 935

FRASER RIVER

C.N.R.  
R/W PLAN A-108

ROAD  
0.494 AC.

Area of R/W (Plan 22262)  
in Road = 0.011 Ac.

Travelled Road = 1.42 Ac.  
Additional Road = 2.00 Ac.  
Total = 3.42 Ac.

D.L. 935



No mark found

N 89° 10' 10" E.  
1716.70 (calc.)