

A-26

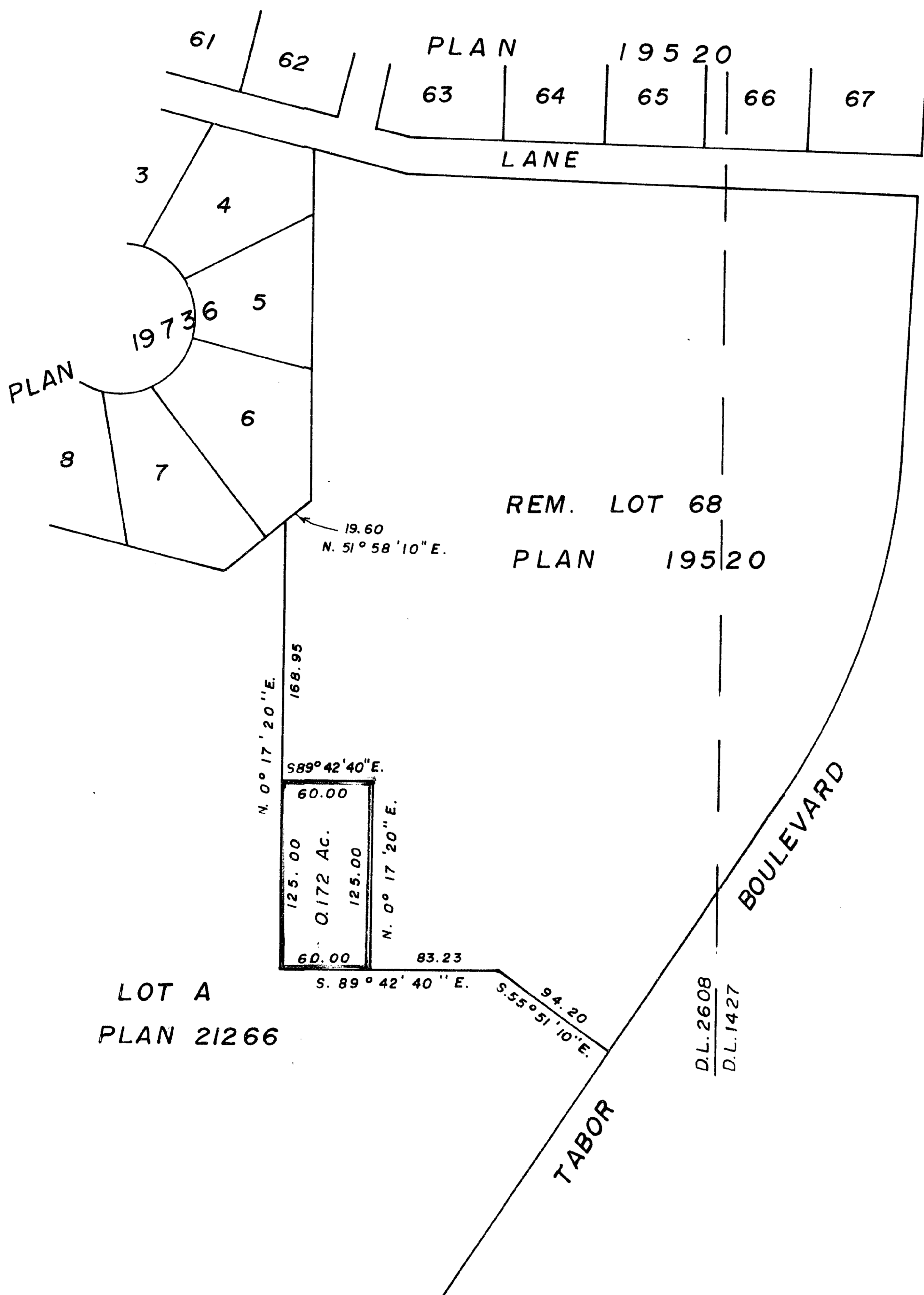
EXPLANATORY PLAN of EASEMENT
 WITHIN LOT 68, EXCEPT PLANS
 19736, 21450, and 21266, PLAN 19520,
 DISTRICT LOTS 1427, 2507, and 2608,
 CARIBOO DISTRICT.

SCALE: 1" = 100'

PLAN NO. 22394

Deposited in the Land Registry Office at
 Prince George this 17th day of -- NOV -- 1975.

--- "E. T. SCHOOLEY"
 Registrar *Per: aff*



CERTIFIED CORRECT
 according to Land Registry Office Records
 this 28 day of October, 1975.

D. Keown
 D. Keown, B.C.L.S.

BOOK of REFERENCE	
Description	Area Required
Rem. Lot 68, Pl. 19520	0.172 Ac.

This plan lies within the Fraser
 Fort-George Regional District.

McWilliam Whyte Goble & Associates,
 B.C. Land Surveyors,
 Prince George, Kamloops, Smithers.,

REF. NO. 74178-75A