

PLAN 15486 D. L. 2433

PLAN No 22369
 Deposited in the Land Registry
 Office at Prince George, B.C. this
 21 day of Oct. 1975

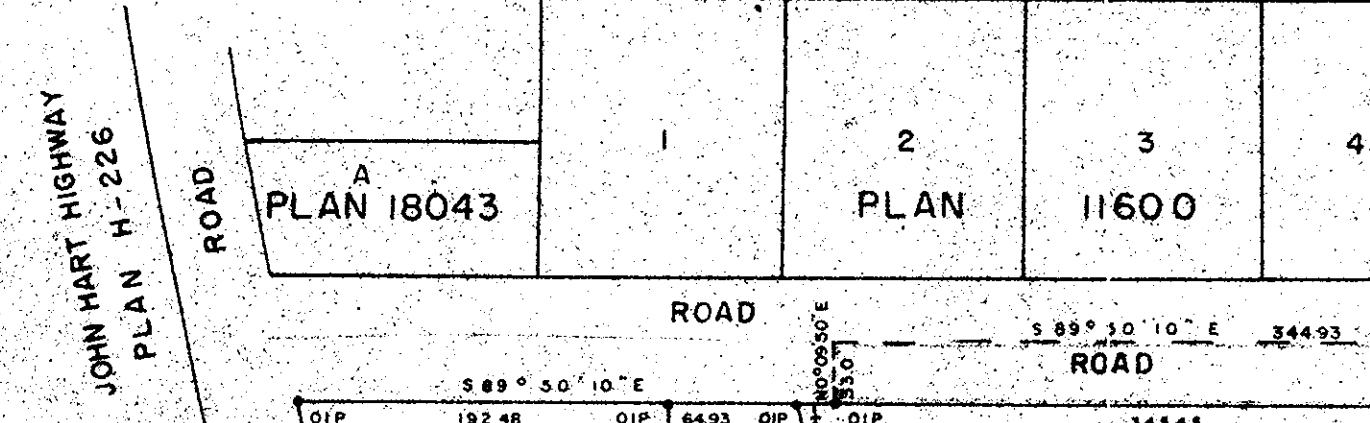
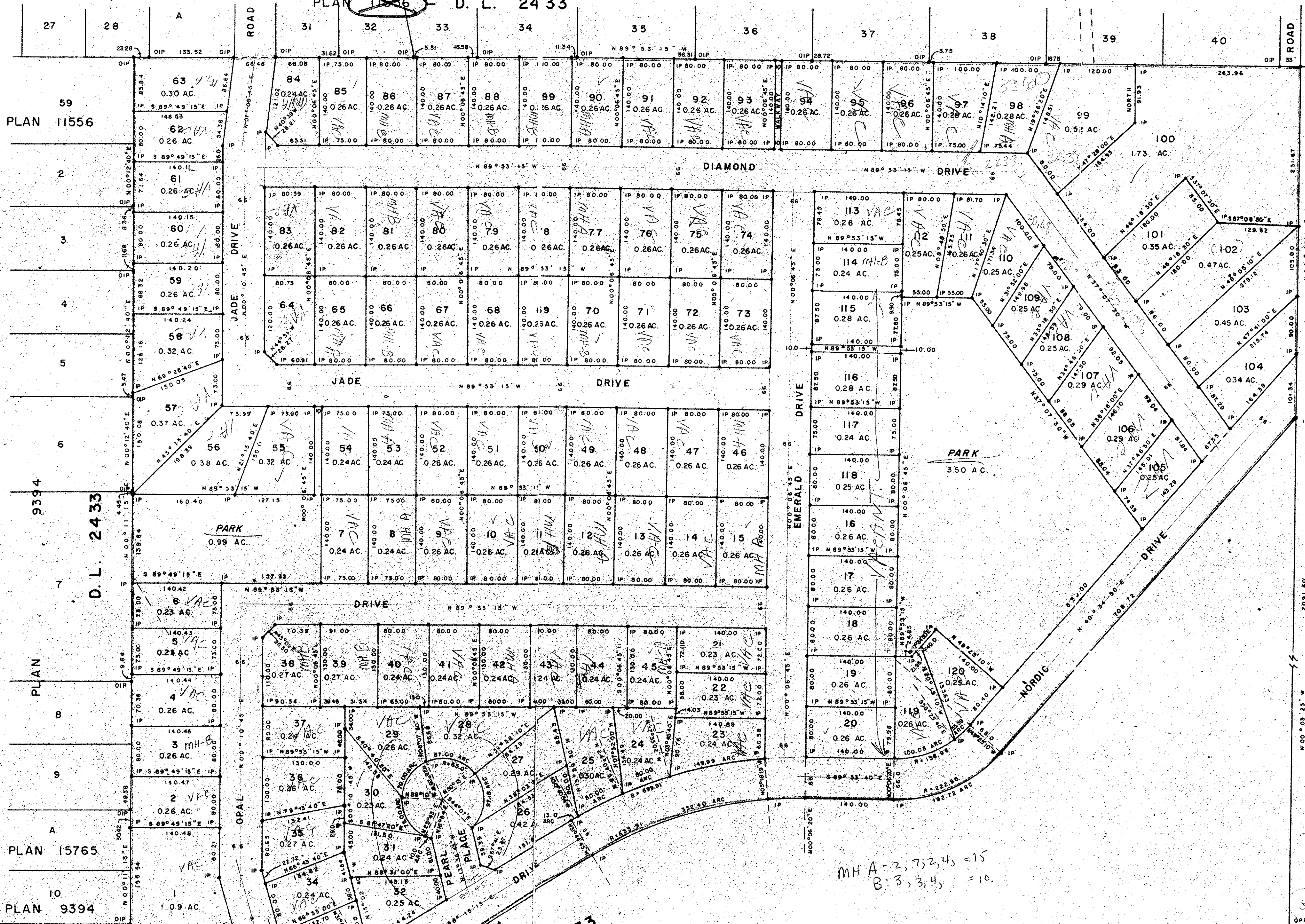
E. F. Schooley
 Registrar

PLAN OF SUBDIVISION OF PART OF
 S. W. 1/4 DISTRICT LOT 2433
 CARIBOO DISTRICT - BRITISH COLUMBIA

SCALE: 1" = 100'

NOTE: Bearings are astronomic, derived from the
 north boundary of Lot A, Plan 14477.

LEGEND: • OPP denotes an old pipe post found.
 • OIP denotes an old iron pin found.
 • IP denotes an iron pin set.



ROAD	
8	9
PLAN 15486	N.E. 1/4
D.L. 4047	D.L. 4047

I, DONALD A. DUFFY of the City of Prince George,
 a British Columbia Land Surveyor, make oath and say
 that I was present at and did personally superintend
 the survey represented by this plan and that the survey
 and plan are correct. The said survey was completed
 on the 17 day of Oct. 1975.

A
 PLAN
 14477
 PLAN
 21247

GLENVIEW ESTATES LTD.
[Signature]
 President

THE ROYAL BANK OF CANADA
 BY ITS LAWFUL ATTORNEYS

Approved under the Land Registry Act
 this 22nd day of Oct. 1975

[Signature]
 Approving Officer, City of Prince George

This plan lies within the Fraser-Fort George
 Regional District.

Sworn before me this 12
 day of Sept. 1975

[Signature]
 A Commissioner for taking Affidavits
 for British Columbia.