

PLAN OF SUBDIVISION OF REMAINDERS OF  
 LOTS 16, 17, 18 & 19, BLOCK 13, PLAN 796  
 & PART OF CLOSED MONKLEY AVENUE, PLAN 22079  
 DISTRICT LOT 932  
 CARIBOO DISTRICT-BRITISH COLUMBIA

PLAN N<sup>o</sup> **22366**

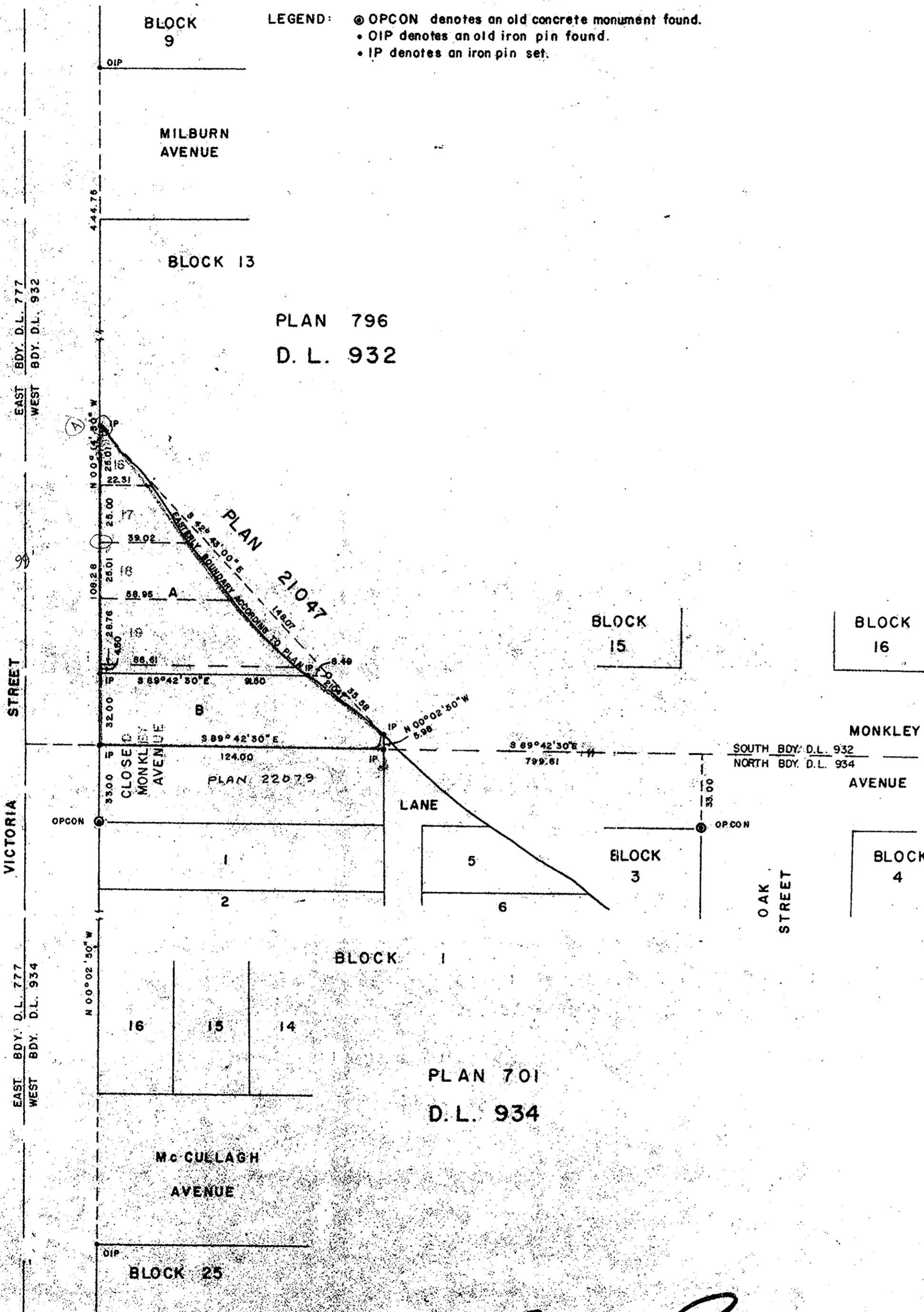
Deposited in the Land Registry  
 Office at Prince George, B.C. this  
 24 day of Oct., 1975

SCALE: 1" = 40'

NOTE: Bearings are astronomic, derived from the east  
 boundary of Victoria Street as shown on Plan 21047.

LEGEND: ● OPCON denotes an old concrete monument found.  
 • OIP denotes an old iron pin found.  
 • IP denotes an iron pin set.

*E. S. Sutcliff*  
 Registrar



I, DONALD A. DUFFY of the City of Prince George,  
 a British Columbia Land Surveyor, make oath and say  
 that I was present at and did personally superintend  
 the survey represented by this plan and that the survey  
 and plan are correct. This said survey was completed  
 on the 22 day of Oct., 1975

*Laurie Paul*  
 Surveyor  
*W. G. Hall*  
 Witness

Approved under the Land Registry Act  
 this 24<sup>th</sup> day of Oct., 1975

*C. J. O'Neil*  
 Approving Officer, City of Prince George

Sworn before me this 24  
 day of Oct., 1975

*Commissioner*  
 A Commissioner for taking Affidavits  
 for British Columbia

This plan lies within the Fraser-Fort George  
 Regional District.

W. O. USHER & ASSOCIATES  
 LAND SURVEYORS  
 PRINCE GEORGE, B.C.  
 H.C. 26