

PLAN OF SUBDIVISION OF
 LOTS F & G, PLAN 8482
 DISTRICT LOT 2611
 CARIBOO DISTRICT—BRITISH COLUMBIA

SCALE: 1" = 50'

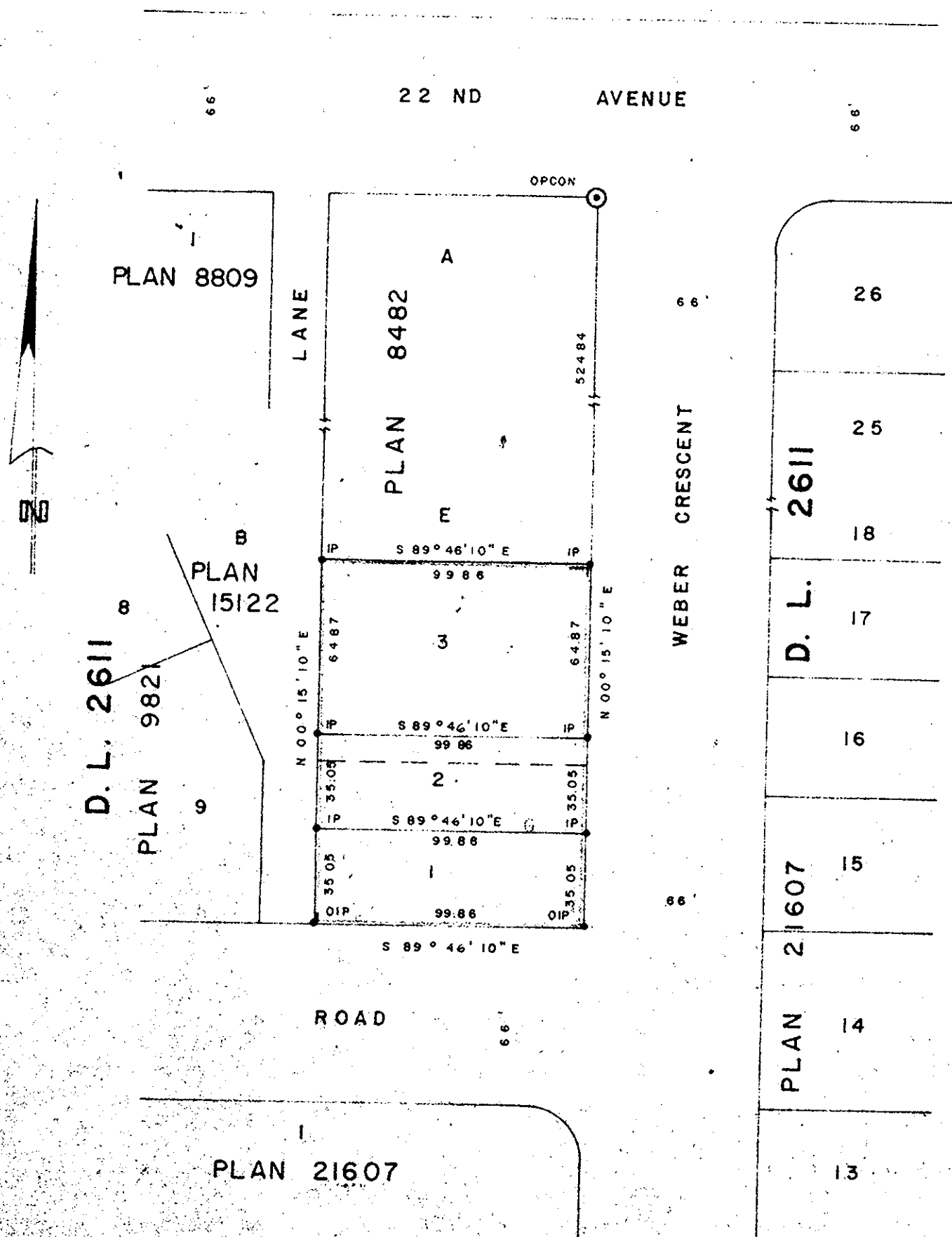
NOTE: Bearings are astronomic, derived from the west boundary of Weber Crescent as shown on Plan 21607.

LEGEND: ○ OPCON denotes an old concrete monument found.
 • OIP denotes an old iron pin found.
 • IP denotes an iron pin set.

PLAN N^o 22328

Deposited in the Land Registry Office at Prince George, B.C. this 3 day of Oct., 1975

Registrar "E.T. Schooley"



I, DONALD A. DUFFY of the City of Prince George, a British Columbia Land Surveyor, make oath and say that I was present at and did personally superintend the survey represented by this plan and that the survey and plan are correct. The said survey was completed on the 31st day of JULY, 1975.

[Signature]
 B.C.L.S.

Owner *[Signature]*

Witness *[Signature]*

Approved under the Land Registry Act this 17th day of September, 1975

[Signature]
 Approving Officer, City of Prince George

Sworn before me this 19 day of Sept., 1975

[Signature]
 Commissioner for Taking Affidavits for British Columbia

This plan lies within the Fraser-Fort George Regional District.