

PLOTTED

(CM) (CL) (DM) (DL)

PLAN OF SUBDIVISION OF  
PARCEL B, PLAN 1153  
DISTRICT LOT 3683  
CARIBOO DISTRICT - BRITISH COLUMBIA

PLAN N<sup>o</sup> **22317**  
Deposited in the Land Registry  
Office at Prince George, B.C. this  
29<sup>th</sup> day of Sept. 1975

SCALE: 1" = 300'

NOTE: Bearings are astronomic, derived from the  
south boundary of Lots 1 & 2, Plan 22317

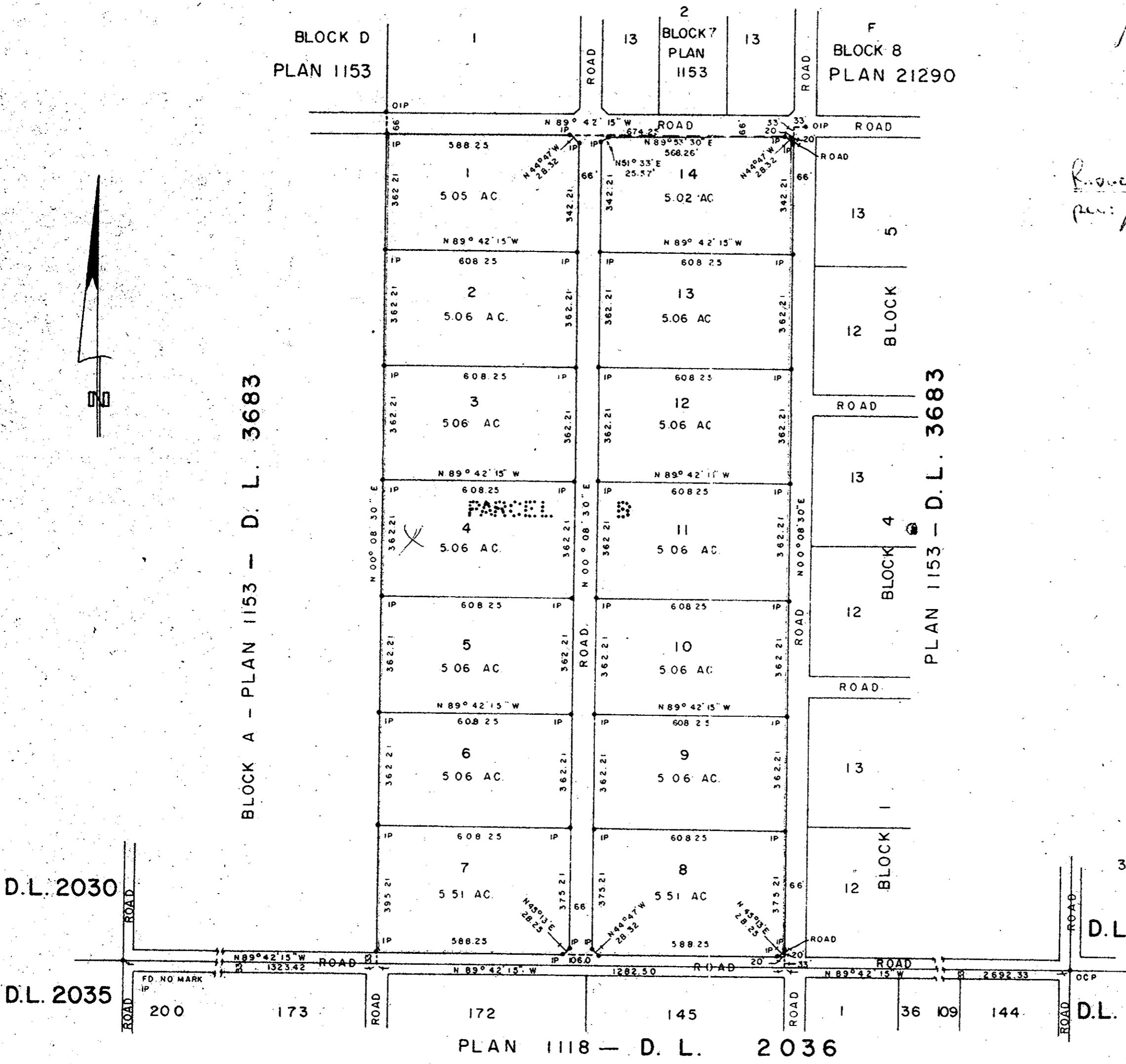
E. T. SCHOOLEY  
Registrar

LEGEND: • OCP denotes an old capped iron pin found.  
• OIP denotes an old iron pin found.  
• IP denotes an iron pin set.

The registered owners designated hereon, hereby  
declare that they have entered into a condition  
or drainage right-of-way with the City of Prince  
George under Section 24 A of the Land Registry Act.

WESTRIDGE HEIGHTS ENTERPRISES LTD.

D. L. 3683



Route Services Ltd.  
per: J.M. Pearson

NORTH-RUPP EQUIPMENT LTD.

Blottman

EDGEWORTH CONSTRUCTION  
& RENTALS LTD.

P. Pearson

New Lakhona Management  
Services Ltd.

D.L. 7637

D.L. 6883

I, DONALD A. DUFFY of the City of Prince George,  
a British Columbia Land Surveyor, make oath and say  
that I was present at and did personally superintend  
the survey represented by this plan and that the survey  
and plan are correct. The said survey was completed  
on the 18th day of August, 1975.

*[Signature]*  
B.C.L.S.

Sworn before me this 26<sup>th</sup>  
day of August, 1975.

*[Signature]*  
MORTGAGEE

S. Willmann  
MORTGAGEE

*[Signature]*  
WITNESS  
AS TO BOTH SIGNATURES

Approved under the Land Registry Act  
this 22<sup>nd</sup> day of AUG. 1975.

*[Signature]*  
Approving Officer, City of Prince George

This plan lies within the Fraser-Fort George  
Regional District.

A Commissioner for taking Affidavits  
for British Columbia.