

PLAN OF SUBDIVISION OF
 LOT 15, PLAN 21226
DISTRICT LOT 934
 CARIBOO DISTRICT - BRITISH COLUMBIA

PLAN N^o 22298

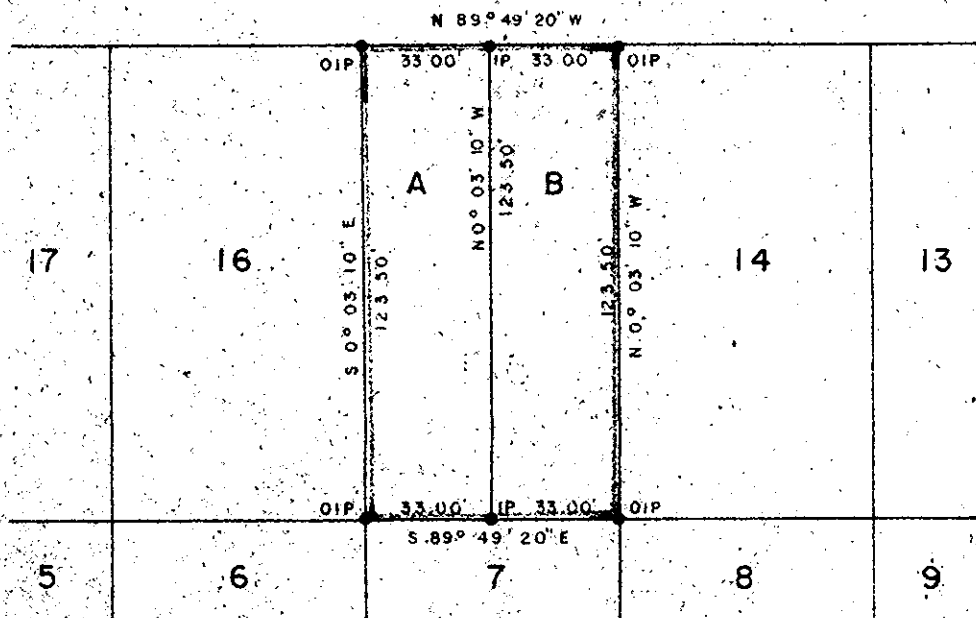
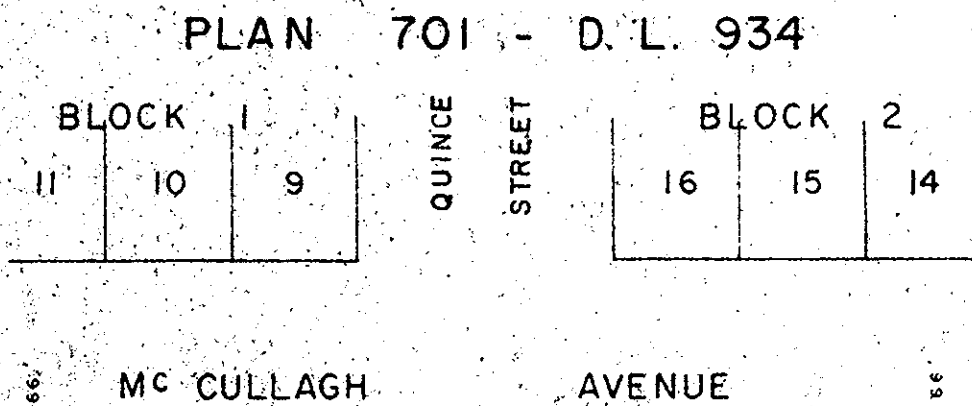
Deposited in the Land Registry
 Office at Prince George B.C. this
11 day of Sept, 1975

SCALE: 1" = 50'

NOTE: Bearings are astronomic, derived from the
 East Boundary of Lot 15, Plan 21226.

"E. T. SCHOOLEY"
 Registrar

LEGEND: • OIP denotes an old iron pin found.
 • IP denotes an iron pin placed on this survey.



PLAN 21226 - D. L. 934

J. DONALD A. DUFFY of the City of Prince George,
 a British Columbia Land Surveyor, make oath and say
 that I was present at and did personally supervise
 the survey represented by this plan and that the survey
 and plan are correct. The said survey was completed
 on the 16th day of AUGUST, 1975.

[Signature]
 B.C.L.S.

Sworn before me this 21
 day of August, 1975

[Signature]
 A. Commissioner for taking Affidavits
 for British Columbia

LAVONNE HOLDINGS LTD.

[Signature]

President

Approved under the Land Registry Act
 this 27 day of August, 1975

[Signature]
 Approving Officer, City of Prince George

This plan lies within the Fraser-Fort George
 Regional District.