

PLAN OF SUBDIVISION OF PART OF  
LOT A, PLAN 17485  
DISTRICT LOT 635  
CARIBOO DISTRICT - BRITISH COLUMBIA

SCALE 1" = 100'

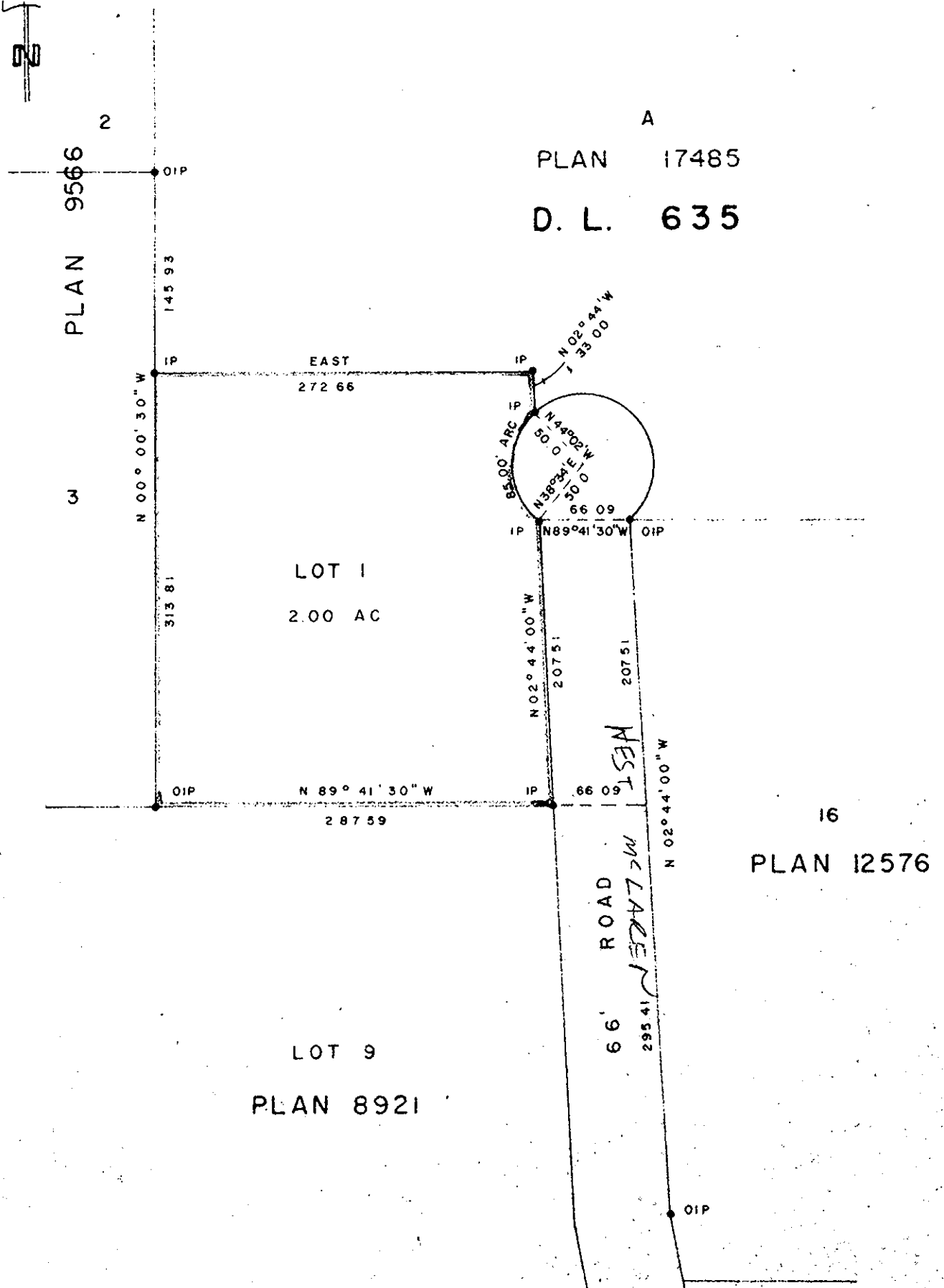
NOTE: Bearings are astronomic, derived from the west boundary of Lot 16, Plan 12576.

LEGEND: •OIP denotes an old iron pin found.  
•IP denotes an iron pin set.

PLAN No 22296

Deposited in the Land Registry Office at Prince George, B.C. this 12 day of Sept, 1975

"E. T. SCHOOLLEY"  
Registrar



I, DONALD A DUFFY of the City of Prince George, British Columbia Land Surveyor, make oath and say that I was present at and did personally superintend the survey represented by this plan and that the survey and plan are correct. The said survey was completed on the 25 day of JULY, 1975.

Approved under the Land Registry Act this 30 day of JULY, 1975

PLAN 8921

B. & S. HOLDINGS LTD.

C. E. Oost  
Approving Officer, City of Prince George

Sworn before me this 28 day of JULY, 1975

B.C.L.S.

This plan lies within the Fraser-Fort George Regional District.

Commissioner for Taking Affidavits for British Columbia

W. D. USHER & ASSOCIATES  
LAND SURVEYORS  
PRINCE GEORGE - B.C.  
1J. 18-19 .7228