

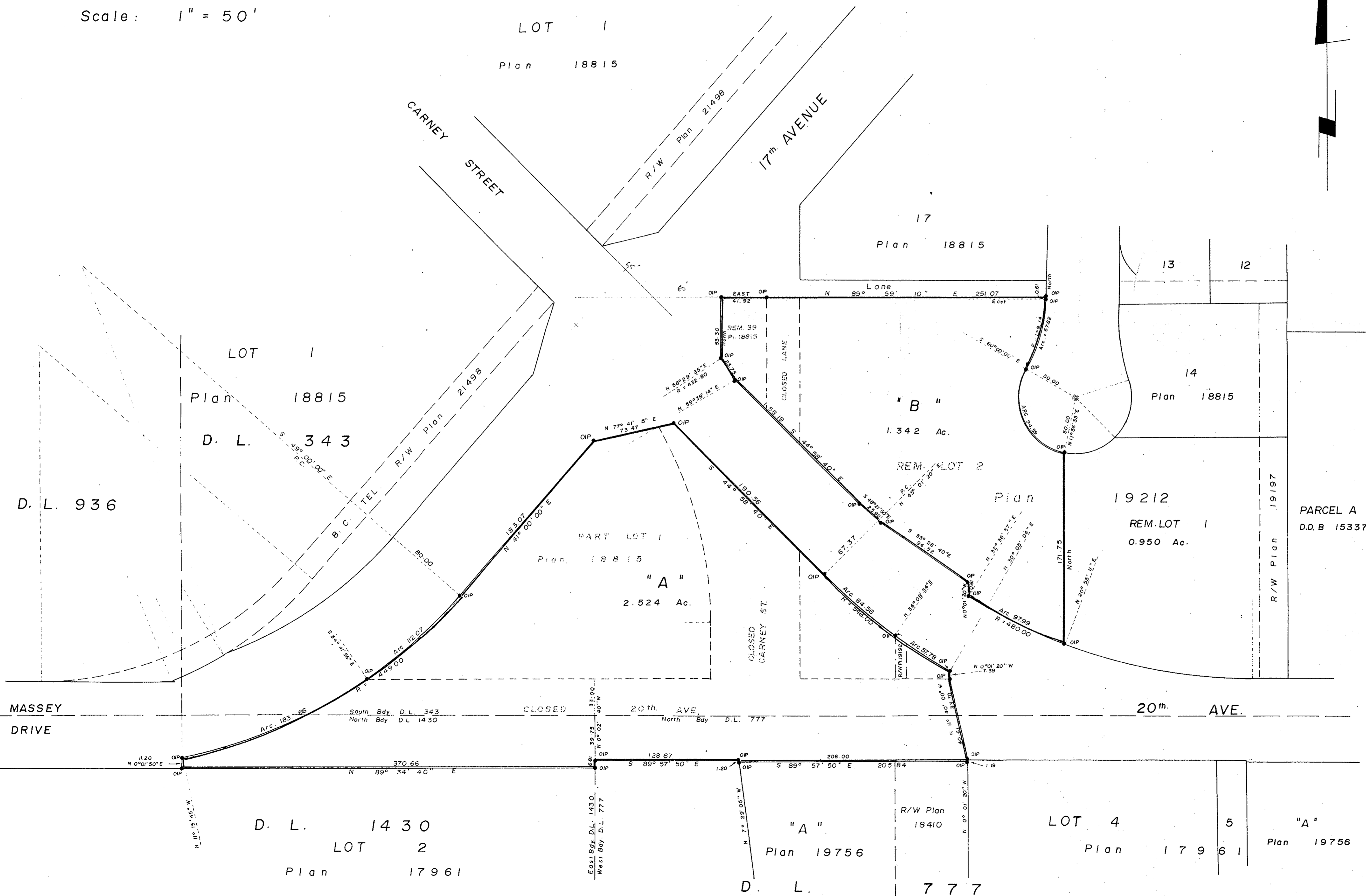
# PLAN OF SUBDIVISION

of REM. LOT 39, PLAN 18815  
PART LOT 1, PLAN 18815, REM. LOT 2, PLAN 19212  
and CLOSED LANE, CLOSED CARNEY STREET,  
CLOSED 20<sup>th</sup> AVENUE as shown on BY-LAW PLAN 2747  
D. L's 343, 777 and 1430  
CARIBOO DISTRICT

PLAN NO. 32292  
DEPOSITED IN THE LAND REGISTRY OFFICE  
AT PRINCE GEORGE THIS 10 DAY OF Sept. 1975

E. T. Schooney  
REGISTRAR

Scale: 1" = 50'



BEARINGS ARE ASTRONOMIC, DERIVED FROM PLAN 18815  
• IP ..... Standard Iron Post  
• OIP ..... Old Iron Post

I, V. BARTELL OF THE CITY OF PRINCE GEORGE BRITISH COLUMBIA LAND SURVEYOR MAKE OATH AND SAY THAT I WAS PRESENT AT AND DID PERSONALLY SUPERINTEND THE SURVEY REPRESENTED BY THIS PLAN, AND THAT THE SAID SURVEY AND PLAN ARE CORRECT. THE SAID SURVEY WAS COMPLETED ON THE 2 DAY OF December 1974.

APPROVED UNDER THE LAND REGISTRY ACT THIS 3<sup>rd</sup> DAY OF JUNE 1975

*V. Bartell*  
V. BARTELL, B.C.L.S.

Approving Officer  
City of Prince George  
Reapproved SEPT 8, 1975

SWORN BEFORE ME AT PRINCE GEORGE THIS 23 DAY OF December 1974.

*V. Bartell*  
A Commissioner for taking affidavits for British Columbia

THIS PLAN LIES WITHIN THE FRASER-FORT GEORGE REGIONAL DISTRICT.

THE SEAL OF THE CITY OF PRINCE GEORGE WAS AFFIXED HERETO IN THE PRESENCE OF:

Mayor *[Signature]*  
City Clerk *[Signature]*

McWILLIAM - WHYTE - GOBLE & ASSOCIATES  
B. C. LAND SURVEYORS  
PRINCE GEORGE - KAMLOOPS - SMITHERS  
REF. NO. 74 100 - 22 - 1