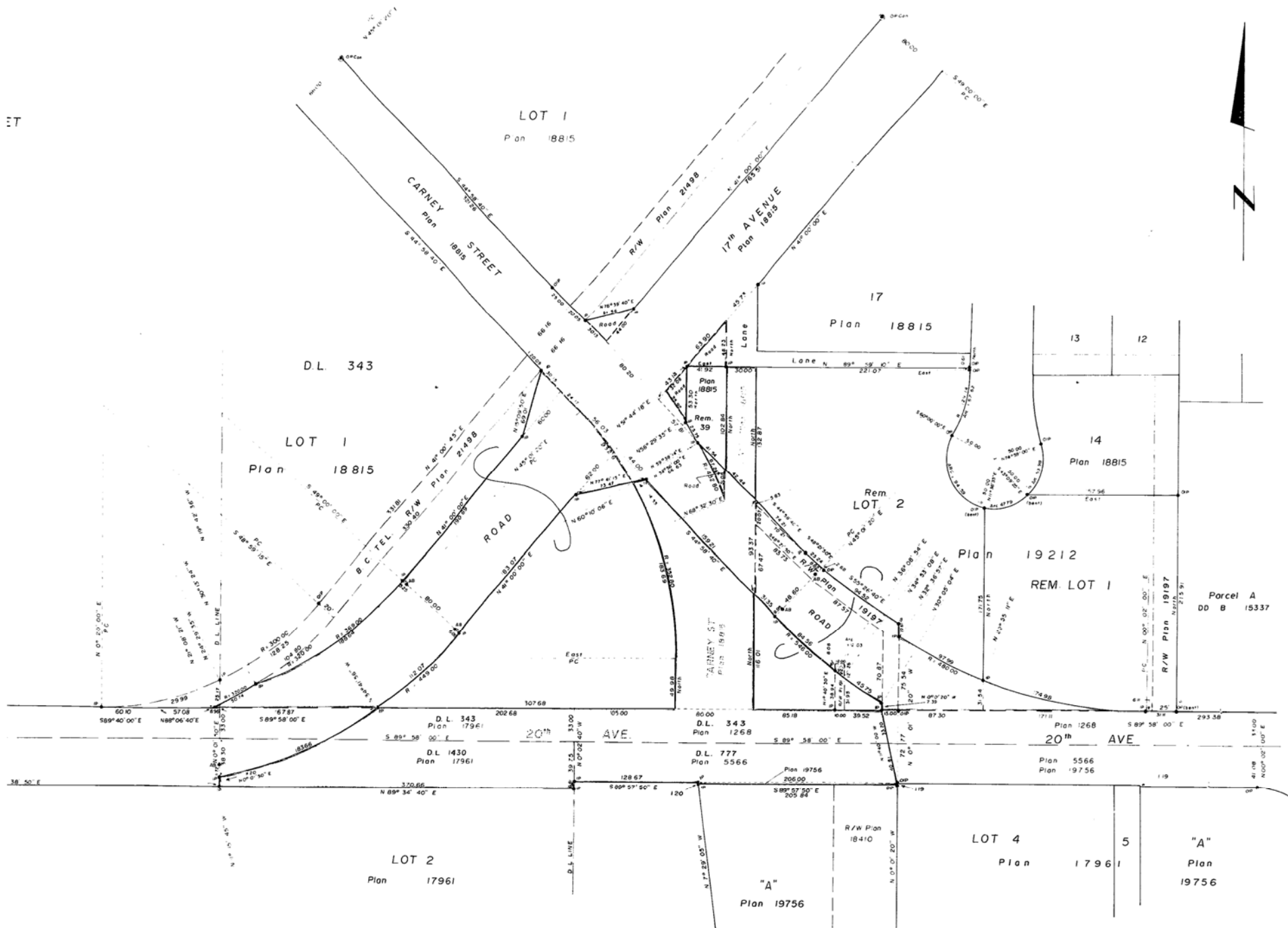


12

PLAN NO. 22291  
 Deposited in the Land Registry Office  
 at Prince George on the 21 day of Sept. 1975



NOTE

- Roads and Lane to be closed shown outlined in red
  - Part 30<sup>th</sup> Lane Plan 18815 = 0.081 Ac
  - Part Carney Street Plan 18815 = 0.338 Ac
  - Part 20<sup>th</sup> Ave Plan 17961, 19756, 5566, 1268 = 1.078 Ac
  - Total = 1.497 Ac
- Roads to be dedicated shown outlined in green
  - Part Lot 1, Plan 18815 = 0.826 Ac
  - Part Lot 39, Plan 18815 = 0.045 Ac
  - Part Lot 2, Plan 19212 = 0.418 Ac
  - Part Lot 1, Plan 19212 = 0.041 Ac
  - Total = 0.002 Ac
- Road dedicated in R/W Plan 19192 = 0.002 Ac
- Road dedicated in R/W Plan 19197 = 0.091 Ac

BEING THE 25<sup>th</sup> DISTRICT AND THE 24<sup>th</sup> DISTRICT  
 Plan 18815

Standard Iron Post  
 Old Iron Post  
 30/30 Con. Post  
 Aluminum Bolt Caps

J. V. BARTLELL of the City of Prince George  
 British Columbia Land Surveyor, make oath and  
 say that I was present at and did personally  
 supervise the survey represented by this  
 plan and that the survey and plan are correct  
 The said survey was completed on  
 the 2<sup>nd</sup> day of DECEMBER 1974

*J. V. Bartlell*  
 J. V. BARTLELL  
 B.C.L.S.

Sworn before me at Prince George  
 this 23<sup>rd</sup> day of December 1974

*[Signature]*  
 A Commissioner for taking affidavits  
 for British Columbia

Approved under the Land Registry Act  
 on the 3<sup>rd</sup> day of June 1975

*[Signature]*  
 Reapproved Sept. 8, 1975  
*[Signature]*

BRITISH COLUMBIA HYDRO & POWER AUTHORITY

*[Signature]*  
 DIRECTOR

ASSOCIATE SECRETARY

"THIS PLAN LIES WITHIN THE FRASER  
 FORT GEORGE REGIONAL DISTRICT"

McWilliam - Whyte - Goble & Associates  
 B C LAND SURVEYORS  
 PRINCE GEORGE - KAMLOOPS - SMITHERS  
 REF NO 74100-22

PLAN TO ACCOMPANY BY-LAW 2747  
CITY OF PRINCE GEORGE

PURSUANT TO SECTION 509 OF THE MUNICIPAL ACT  
CLOSING PART OF 30' LANE, PART OF CARNEY STREET  
AND PART OF 20<sup>th</sup> AVENUE ADJOINING  
LOTS 1 AND 39, PLAN 18815, LOT 2, PLAN 19212  
LOT 2, PLAN 17961 AND LOT A, PLAN 19756,  
DISTRICT LOTS 343, 777 AND 1430  
DEDICATION OF ROAD IN  
LOTS 1 AND 39, PLAN 18815  
LOTS 1 AND 2, PLAN 19212  
DISTRICT LOTS 343 AND 936  
CARIBOO DISTRICT

SCALE: 1" = 50'

