

PLAN OF SUBDIVISION OF
 LOT B, PLAN 21615
 DISTRICT LOT 1426
 CARIBOO DISTRICT-BRITISH COLUMBIA

SCALE: 1" = 50'

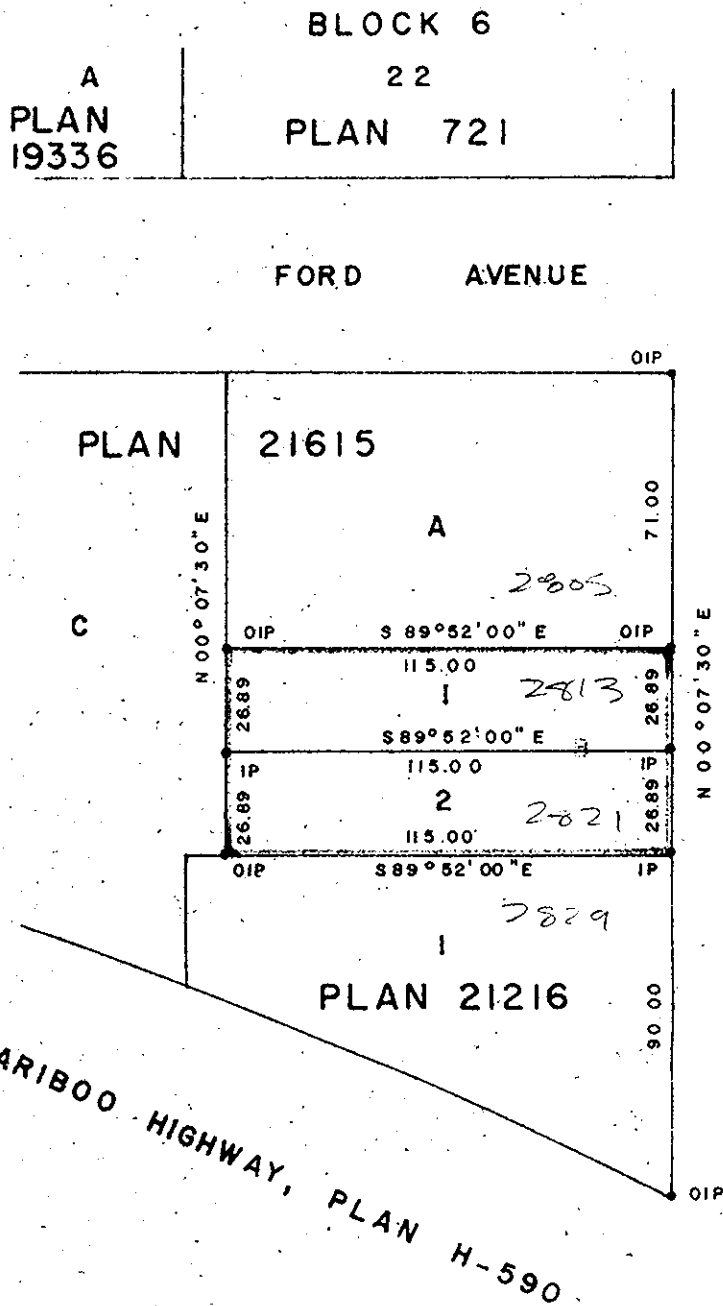
NOTE: Bearings are astronomic, derived from the west boundary of Pine Street as shown on Plan 21216.

LEGEND: •OIP denotes an old iron pin found.
 •IP denotes an iron pin set.

PLAN N^o 22281

Deposited in the Land Registry Office at Prince George, B.C. this 5 day of Sept., 1975

"E.T. SCHOOLEY"
 Registrar



I, DONALD A. DUFFY of the City of Prince George, a British Columbia Land Surveyor, make oath and say that I was present at and did personally superintend the survey represented by this plan and that the survey and plan are correct. The said survey was completed on the 11 day of July, 1975.

[Signature]
 B.C.L.S.

Sworn before me this 14 day of August, 1975

[Signature]
 A Commissioner for taking Affidavits for British Columbia

S. A. K. ENTERPRISES LTD.

[Signature]
[Signature]

Approved under the Land Registry Act this 12th day of AUG., 1975

[Signature]
 Approving Officer, City of Prince George

This plan lies within the Fraser-Fort George Regional District