

PLAN OF RIGHT OF WAY THROUGH
DISTRICT LOT 3683
 CARIBOO DISTRICT - BRITISH COLUMBIA

SCALE: 1" = 100'

NOTE: Bearings are astronomic, derived from the West Boundaries of Lots 8 & 13, Plan

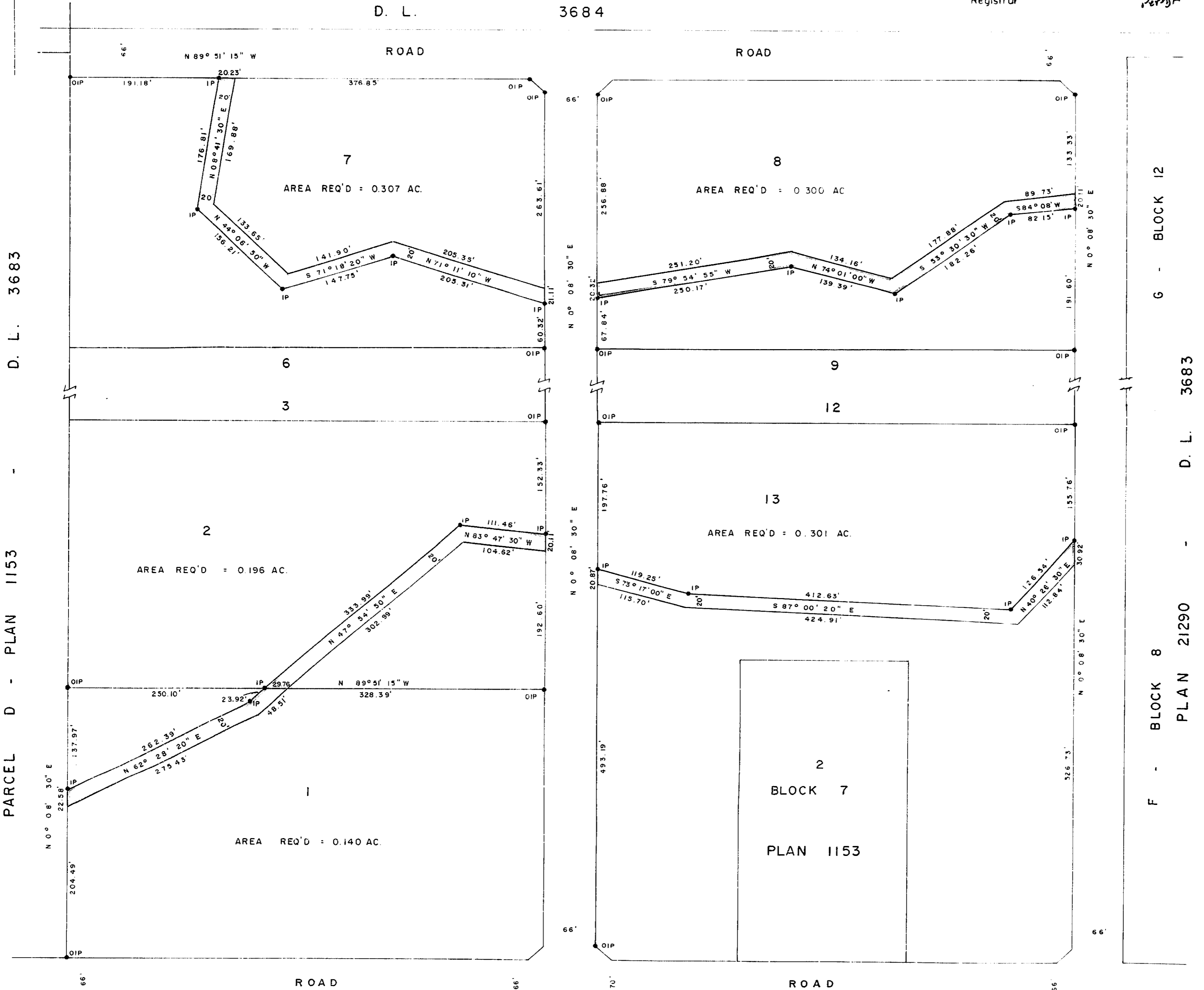
LEGEND: • OIP denotes an old iron pin found.
 • IP denotes an iron pin placed on this survey.

BOOK OF REFERENCE		
LOT	PARCEL	AREA REQ'D
LOT 1, PLAN	D L 3683	0.140 AC
LOT 2, PLAN	D L 3683	0.196 AC
LOT 7, PLAN	D L 3683	0.307 AC
LOT 8, PLAN	D L 3683	0.300 AC
LOT 13, PLAN	D L 3683	0.301 AC

PLAN N^o 22274

Deposited in the Land Registry Office at Prince George, B.C. this 28 day of Aug., 1975

"E.T. SCHOONEY"
 Registrar per D.F.



PARCEL A
 PLAN 1153

I, DONALD A. DUFFY of the City of Prince George, a British Columbia Land Surveyor, make oath and say that I was present at and did personally superintend the survey represented by this plan and that the survey and plan are correct. The said survey was completed on the 18th day of August, 1975.

[Signature]
 B.C.L.S.

Sworn before me this 21 day of August, 1975

A Commissioner for taking Affidavits for British Columbia.

D. L. 3683

BLOCK 5
 PLAN 1153

This plan lies within the Fraser-Fort George Regional District.