

PLAN OF SUBDIVISION OF
 PARCEL C, PLAN 1153
 DISTRICT LOT 3683
 CARIBOO DISTRICT - BRITISH COLUMBIA

SCALE 1" = 300'

NOTE: Bearings are astronomic, derived from the east boundary of Parcel C, as shown on Plan 22333.

LEGEND: • OIP denotes an old iron pin found.
 • IP denotes an iron pin set.

The registered owner designated hereon, hereby declare that they have entered into a condition or drainage right-of-way with the City of Prince George under Section 24 A of the Land Registry Act.

PLAN N^o 22273

Deposited in the Land Registry Office at Prince George, B.C. this 26 day of Aug. 1975

Registrar "E. I. Schooley"

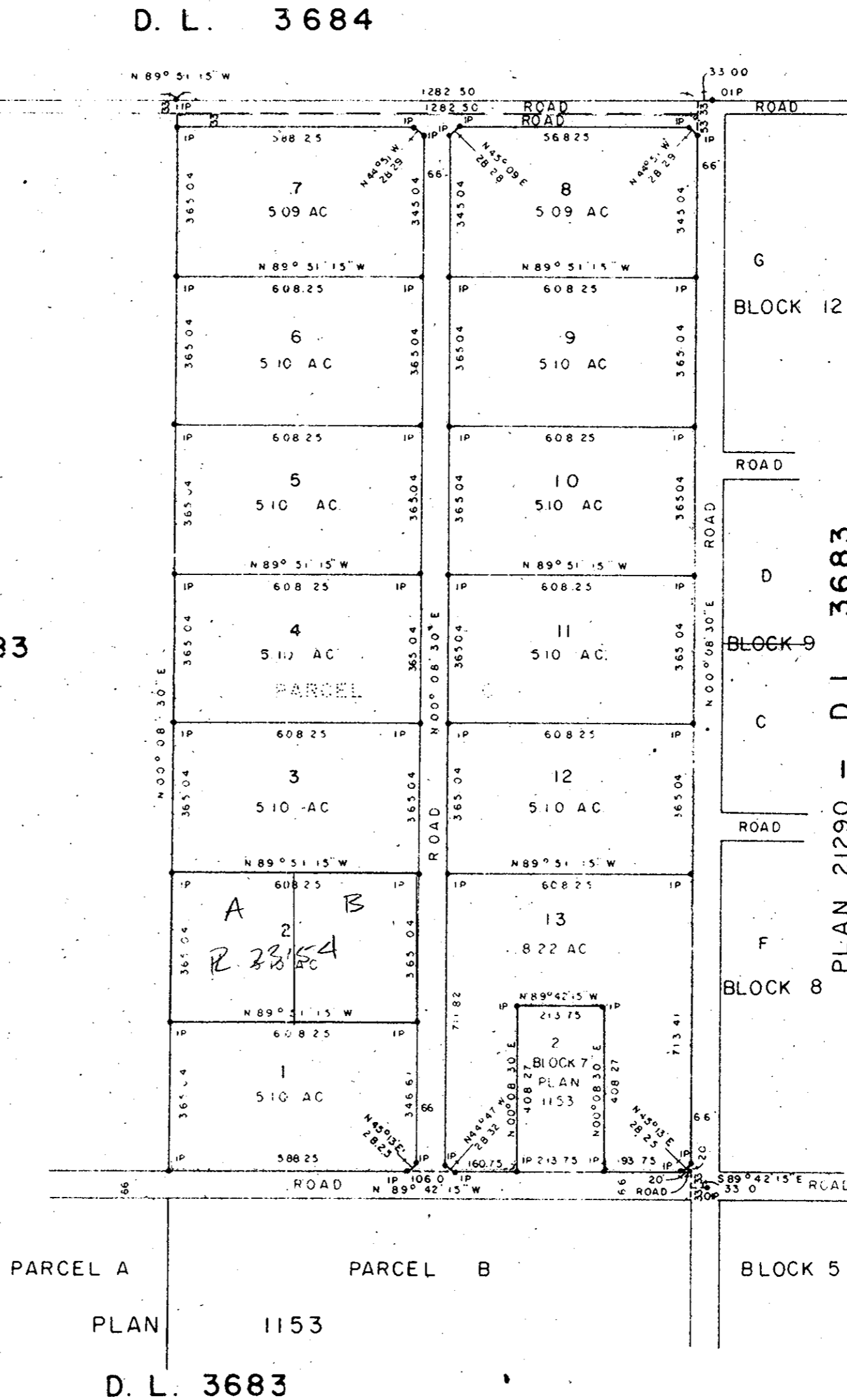
D.L. 3687

D.L. 2030

D.L. 3684

PARCEL D
 PLAN 1153
 D.L. 3683

PLAN 21290 - D.L. 3683



I, DONALD A. DUFFY of the City of Prince George, a British Columbia Land Surveyor, make oath and say that I was present at and did personally superintend the survey represented by this plan and that the survey and plan are correct. The said survey was completed on the 18th day of August, 1975.

[Signature]

Sworn before me this 26 day of August 1975

B.C.L.S.

A Commissioner for taking Affidavits for British Columbia

[Signature]
 MORTGAGEE

[Signature]
 MORTGAGEE

WITNESS
 IN THE BOTH SIGNATURES

[Signature]
 REG: J. H. HAYTON

Approved under the Land Registry Act this 22nd day of AUG 1975

[Signature]
 Approving Officer, City of Prince George

This plan lies within the Fraser-Fort George Regional District.