

(JK)

K26

PLAN OF SUBDIVISION OF
 LOTS 1, 2, 3, 20, 21 & 22, BLOCK 5, PLAN 796
DISTRICT LOT 932
 CARIBOO DISTRICT - BRITISH COLUMBIA

SCALE: 1" = 100'

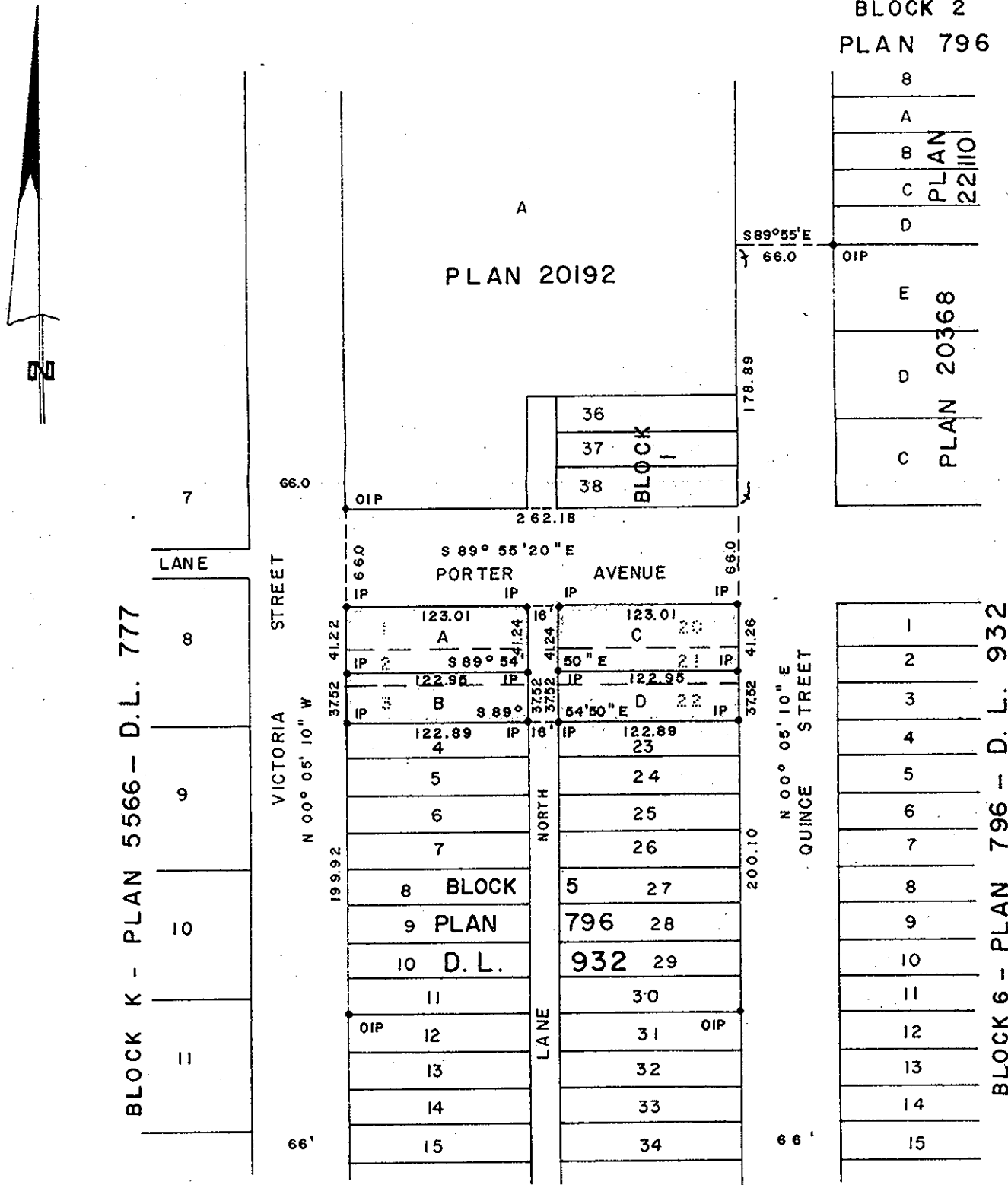
NOTE: Bearings are astronomic, derived from the east boundary of Victoria Street, as shown on Plan 20270

LEGEND: •OIP denotes an old iron pin found.
 •IP denotes an iron pin set.

PLAN N^o 22263

Deposited in the Land Registry Office at Prince George, B.C. this 15th day of AUG., 1975

"E.T. SCHOOLEY"
 Registrar *[Signature]*



I, DONALD A. DUFFY of the City of Prince George, a British Columbia Land Surveyor, make oath and say that I was present at and did personally superintend the survey represented by this plan and that the survey and plan are correct. The said survey was completed on the 26 day of JUNE, 1975

[Signature]
 B.C.L.S.

Sworn before me this 7 day of JULY, 1975

[Signature]
 A Commissioner for taking Affidavits for British Columbia.

BELWOOD CONSTRUCTION LTD.

[Signature]

Approved under the Land Registry Act, this 15th day of AUG., 1975

[Signature]
 Approving Officer, City of Prince George

This plan lies within the Fraser-Fort George Regional District.