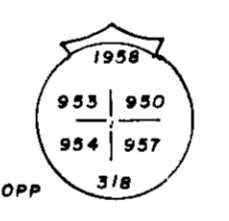
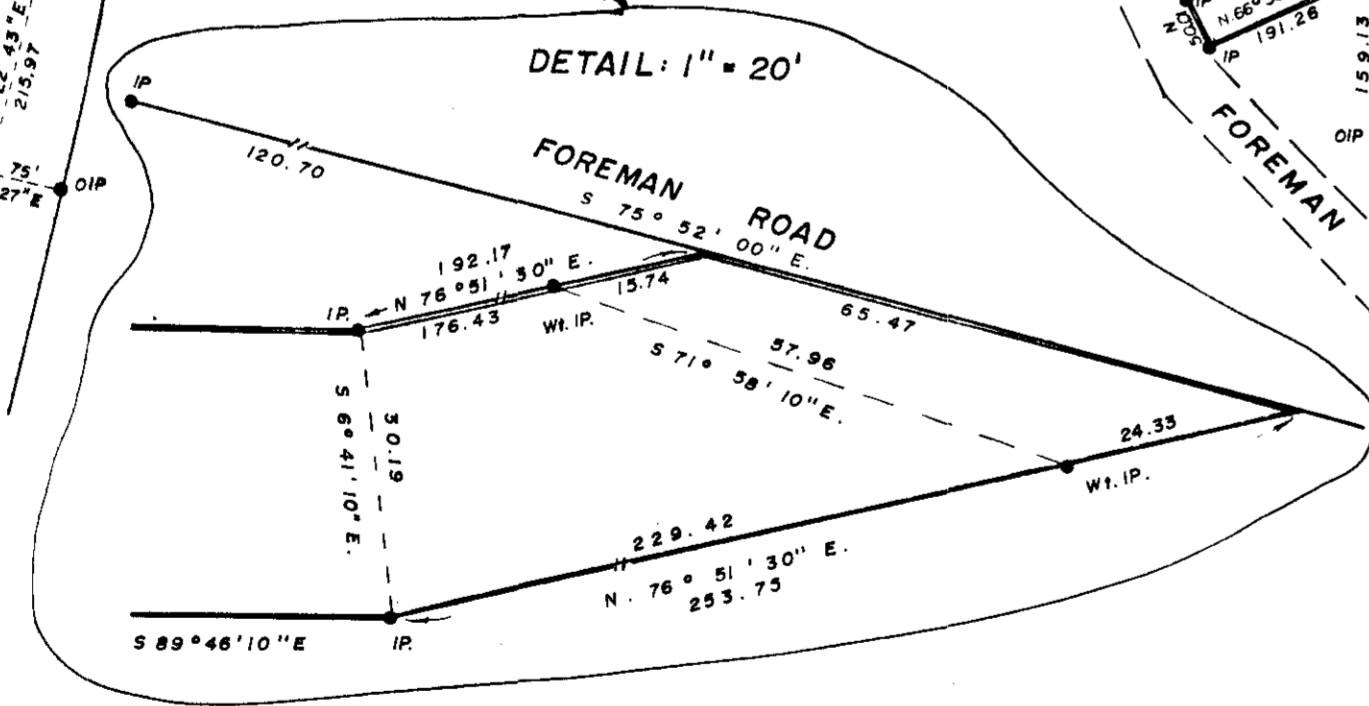
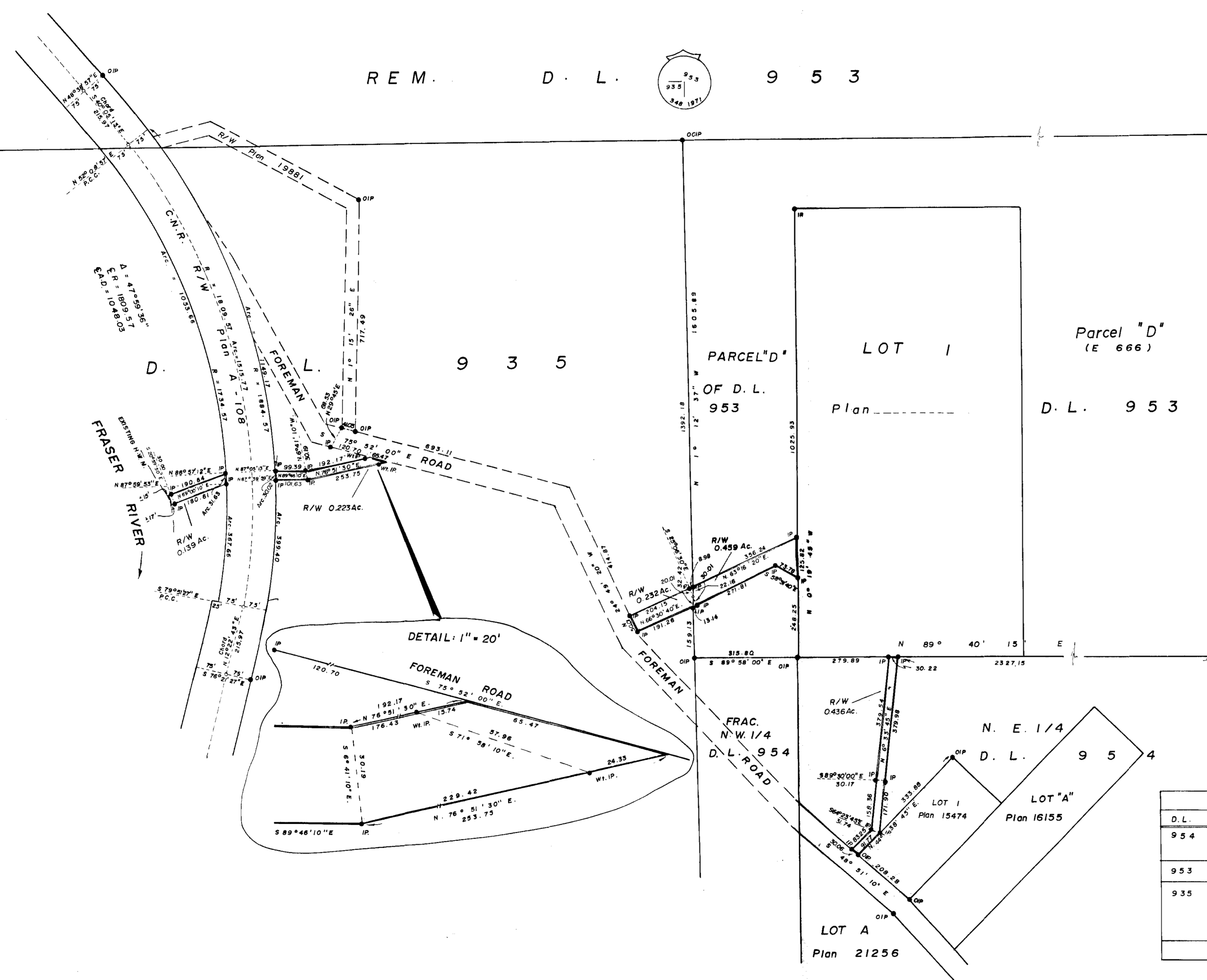


PLAN NO.: 22262
 DEPOSITED IN THE LAND REGISTRY OFFICE AT
 PRINCE GEORGE THIS 21 DAY OF August 1974

W. E. Schofield
 REGISTRAR Per: D.F.

D. L. 2929

REM. D. L. 953



BTs.
 10" Spruce 14.4' S 7° E
 8" Spruce 18.3' S 23° W
 8" Birch 9.4' N 44° E

BOOK OF REFERENCE			
D.L.	DESCRIPTIVE PART	€ DST.	AREA
954	N. E. 1/4	632.40	0.436 Ac.
953	PARCEL "D" (E 666)	355.40	0.459 Ac.
935		202.28	
		323.20	
	C.N.R. PLAN A-108	201.62	0.594 Ac.
TOTAL AREA REQUIRED			1.489 Ac.

CITY OF PRINCE GEORGE
 PLAN OF RIGHT OF WAY
 IN DISTRICT LOTS 935, 953 & 954
 CARIBOO DISTRICT
 Scale: 1" = 200'

BEARINGS ARE ASTRONOMIC, DERIVED FROM NORTH BDY.
 FRAC. N.W. 1/4, D.L. 954, SHOWN AS S 89° 58' 00" E
 ON PLAN 15474.
 ●IP..... STANDARD IRON POST.
 ●CIP..... CAPPED IRON POST.
 O..... DENOTING "OLD"
 WT..... DENOTING "WITNESS"

THIS PLAN LIES WITHIN THE FRASER - FORT GEORGE
 REGIONAL DISTRICT.

I, V. BARTELL OF THE CITY OF PRINCE GEORGE, BRITISH COLUMBIA
 LAND SURVEYOR, MAKE OATH AND SAY THAT I WAS PRESENT AT
 AND DID PERSONALLY SUPERINTEND THE SURVEY REPRESENTED BY
 THIS PLAN AND THAT THE SURVEY AND PLAN ARE CORRECT.
 THE SAID SURVEY WAS COMPLETED ON THE 30 DAY June 1975.

V. Bartell
 V. BARTELL, B.C.L.S.

SWORN BEFORE ME AT PRINCE GEORGE THIS 21 DAY OF August 1974
Commissioner
 A Commissioner for taking affidavits for British Columbia