

PLAN OF SUBDIVISION OF PART OF
N. E. 1/4 OF DISTRICT LOT 754
 CARIBOO DISTRICT— BRITISH COLUMBIA

SCALE: 1" = 50'

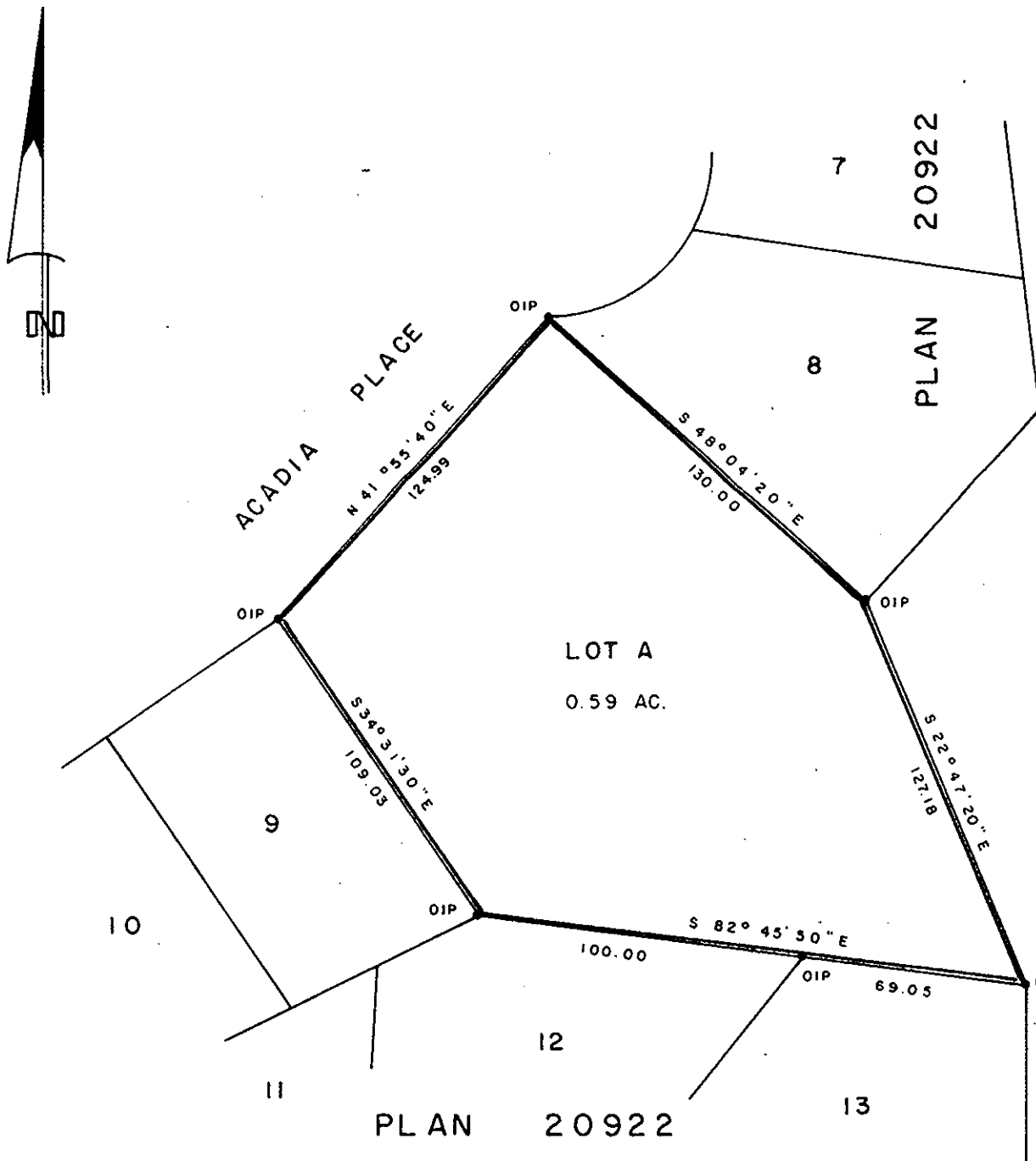
NOTE: Bearings are astronomic, derived from the southerly boundary of Lot 8, Plan 20922.

LEGEND: •OIP denotes an old iron pin found.

PLAN N^o 22240

Deposited in the Land Registry Office at Prince George, B.C. this 8th day of AUG., 1975

Registrar "E.T. SCHODLES"



N. E. 1/4 D. L. 754

THE ROMAN CATHOLIC EPISCOPAL CORPORATION OF PRINCE GEORGE
F. O. Grady

HEIGHTS LAND DEVELOPMENT CO. LTD.

I, DONALD A. DUFFY of the City of Prince George, a British Columbia Land Surveyor, make oath and say that I was present at and did personally superintend the survey represented by this plan and that the survey and plan are correct. The said survey was completed on the 1st day of November 1974.

[Signature]
 B.C.L.S.

Sworn before me this 13 day of EEB. 1975

[Signature]
 A Commissioner for taking Affidavits for British Columbia.

R.D. Yellon
C. Stunges

Approved under the Land Registry Act this 16th day of JUNE, 1975

C. E. Olet.
 Approving Officer, City of Prince George

This plan lies within the Fraser-Fort George Regional District.

W. D. USHER & ASSOCIATES
 LAND SURVEYORS
 PRINCE GEORGE - B.C.
 5508 E