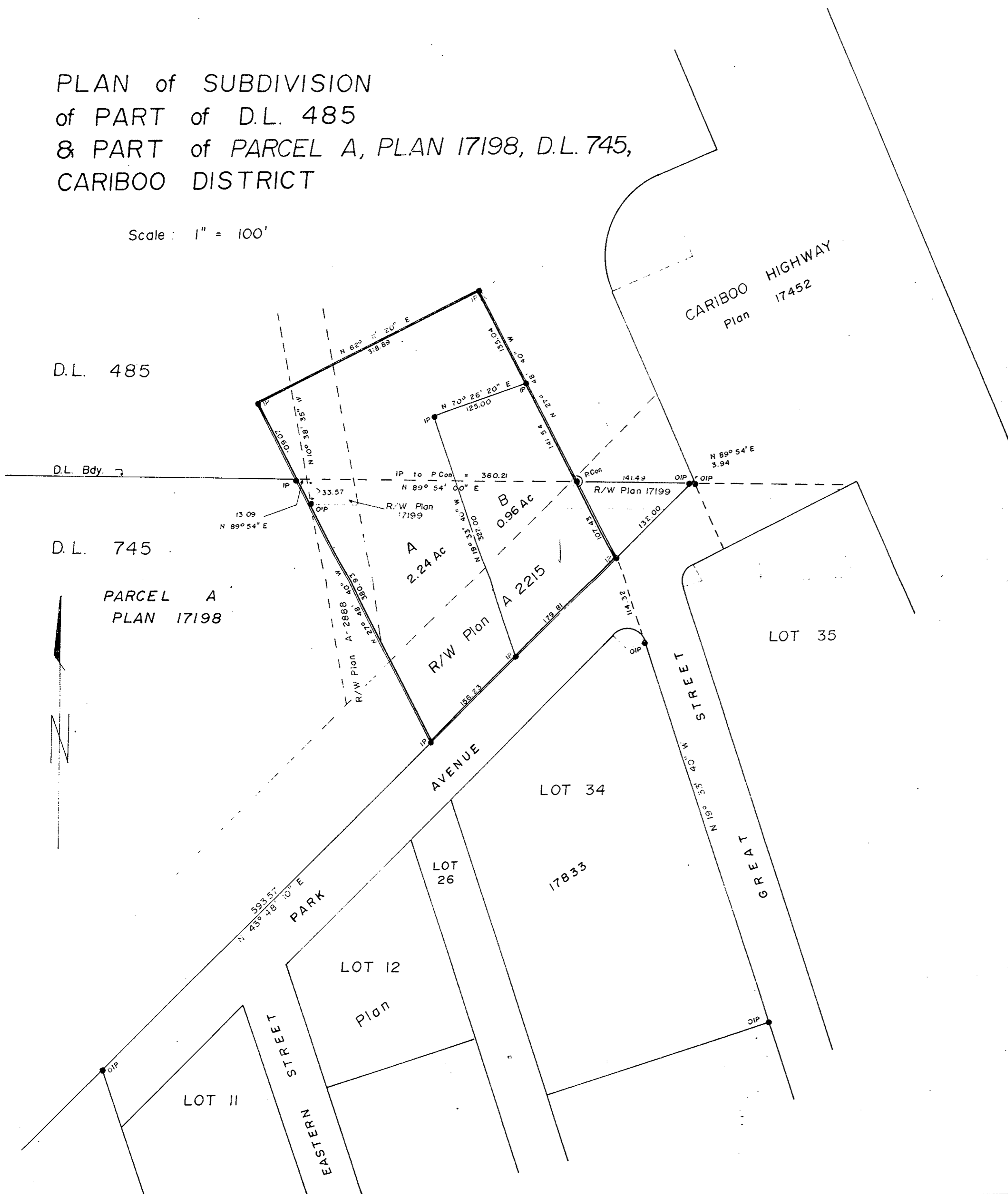


PLAN of SUBDIVISION  
of PART of D.L. 485  
& PART of PARCEL A, PLAN 17198, D.L. 745,  
CARIBOO DISTRICT

Scale: 1" = 100'

PLAN No 22228  
Deposited in the Land Registry Office at  
PRINCE GEORGE on the 1st day of AUG. 1975.

"E.T. SCHODDEY"  
Registrar



Bearings are astronomic and are derived from  
Plan 17833

- P.con. .... Standard Concrete Post.
- P.Rock .... Standard Rock Post.
- P.P. .... Standard Pipe Post.
- I.P. .... Standard Iron Post.
- P. .... Wooden Post.
- L.P. .... Lead Plug.
- ..... Denoting "Old"
- WT. .... Denoting "Witness"
- CIP ..... Capped Iron Post
- ..... Post found

Approved under the Land Registry Act  
on the 18th day of JULY 1975

*P. S. Olet*  
Approving Officer

This plan lies within the FRASER  
FORT GEORGE Regional District.

I, V. BARTELL, of the CITY OF PRINCE GEORGE  
British Columbia Land Surveyor, make oath and  
say that I was present at and did personally  
superintend the survey represented by this  
plan and that the survey and plan are correct  
The said survey was completed on  
the 2nd day of June 1975

*Victor Bartell*  
V. BARTELL, B.C.L.S.

Sworn before me at Prince George  
this 6th day of June 1975.

*W. J. Cameron*  
A Commissioner for taking affidavits  
for British Columbia.

BRITISH COLUMBIA RAILWAY COMPANY  
EXECUTIVE VICE - PRESIDENT  
*W. J. Cameron*  
SECRETARY

McWilliam—Whyte—Gable & Associates  
B.C. LAND SURVEYORS  
PRINCE GEORGE | SMITHERS | KAMLOOPS  
REF No: 75104 (485)  
(745)