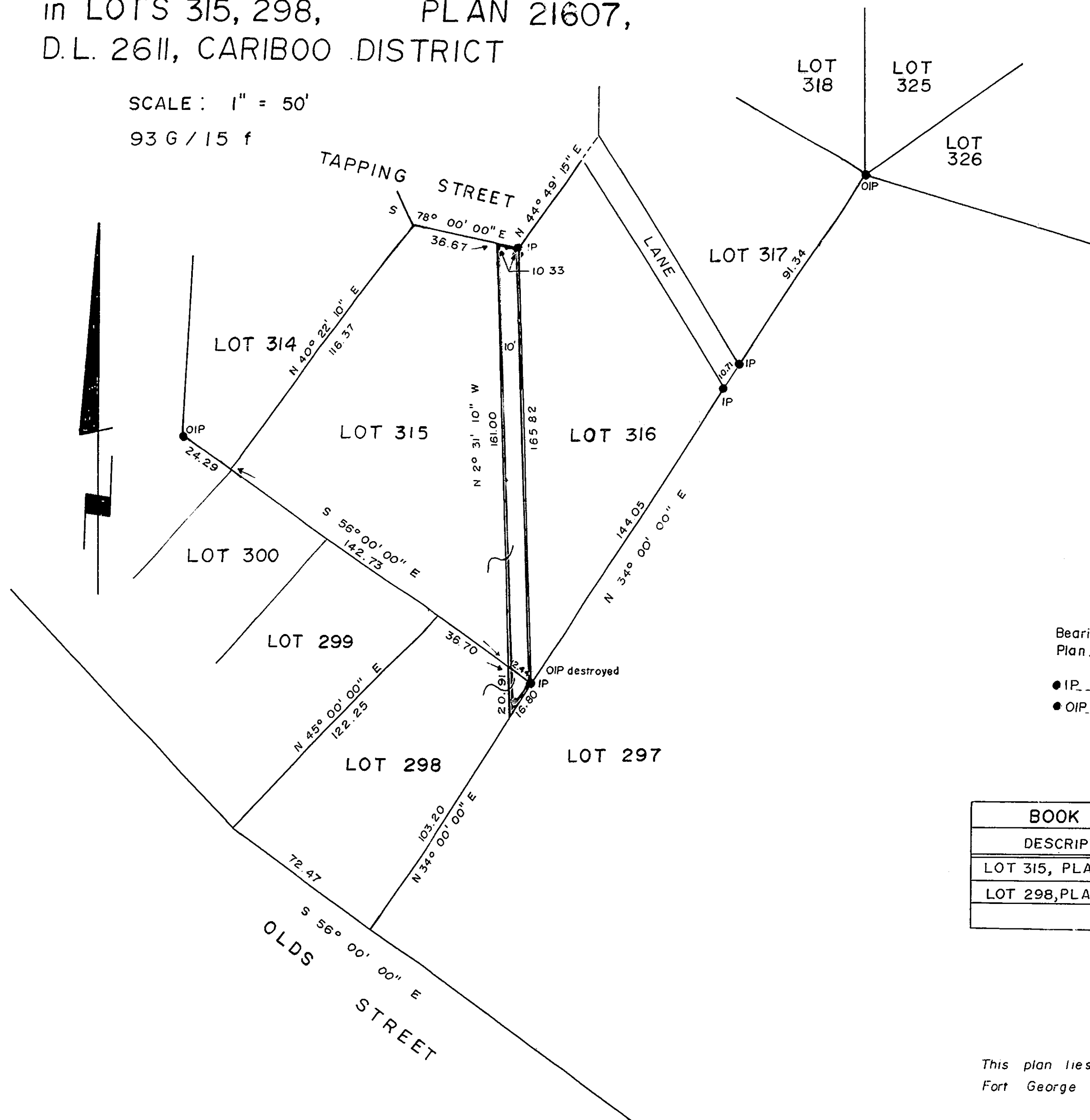


PLAN of RIGHT of WAY
in LOTS 315, 298, PLAN 21607,
D.L. 2611, CARIBOO DISTRICT

SCALE: 1" = 50'
93 G / 15 f

PLAN NO.: 22216
Deposited in the Land Registry Office
at Prince George this 25th day of JULY 1975

"FIT. SCHOONES"
Registrar *per*
DE



Bearings are astronomic, derived from
Plan 21607.

- IP..... Standard Iron Post
- OIP..... Old Iron Post

I, A. DANILUCK of the City of Prince George
British Columbia Land Surveyor make oath and
say that I was present at and did personally
superintend the survey represented by this
plan and that the survey and plan are correct.
The said survey was completed on
the 15th day of November 1974

BOOK OF REFERENCE	
DESCRIPTION	AREA
LOT 315, PLAN 21607	1634 sq. ft.
LOT 298, PLAN "	105 sq. ft.

A. Daniluck
A. DANILUCK B.C.L.S.

Sworn before me at Prince George
this 21st day of November 1974

W. J. Munro
A Commissioner for taking affidavits
for British Columbia

This plan lies within the Fraser-
Fort George Regional District

McWILLIAM - WHYTE - GOBLE & ASSOCIATES
B.C. LAND SURVEYORS
PRINCE GEORGE - KAMLOOPS - SMITHERS

REF. NO.: 74100-21