

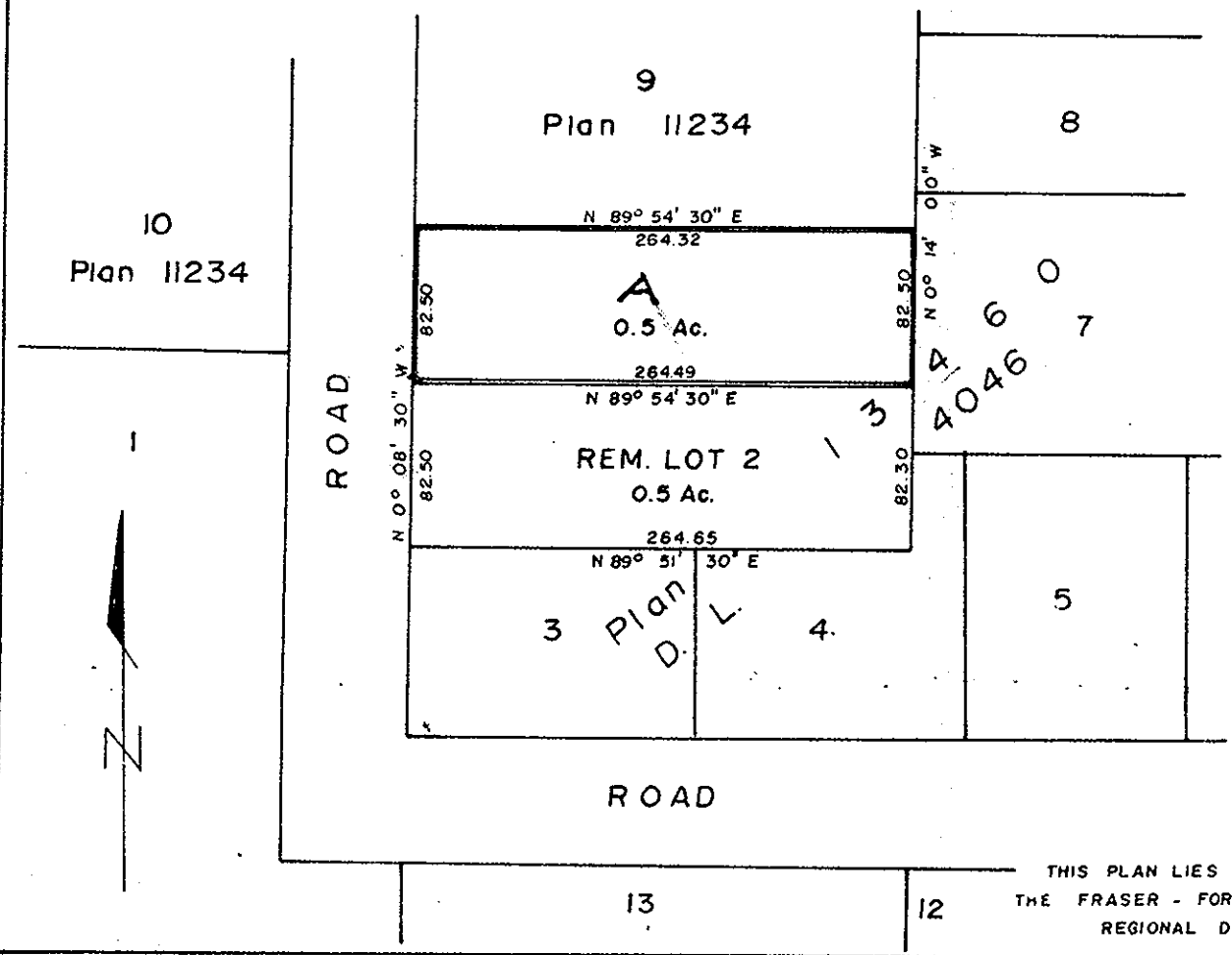
EXPLANATORY PLAN of  
 THE NORTH 82.5 FEET of  
 LOT 2, PLAN 13460, D.L. 4046  
 CARIBOO DISTRICT

SCALE: 1" = 100'

(HS)

PLAN No.: **22 201**  
 Deposited in the Land Registry Office of  
 Prince George, this **18** day of **July** 1975.

**E.T. SCHOOLEY**  
 REGISTRAR



OWNER: *Brent Burt*

WITNESS: *M. H. McNeil*

APPROVED UNDER THE LAND REGISTRY ACT  
 ON THE **18<sup>th</sup>** DAY OF **JULY** 1975

*C. E. Dent*  
 APPROVING OFFICER

CERTIFIED CORRECT  
 ACCORDING TO LAND REGISTRY OFFICE RECORDS  
 THIS **9** DAY OF **July** 1975

*Victor Barnes*  
 B.C.L.S.

THIS PLAN LIES WITHIN  
 THE FRASER - FORT GEORGE  
 REGIONAL DISTRICT

McWILLIAM - WHYTE - GOBLE & ASSOCIATES  
 B.C. LAND SURVEYORS  
 PRINCE GEORGE - KAMLOOPS - SMITHERS  
 REF. No. **75093 (4046)**