

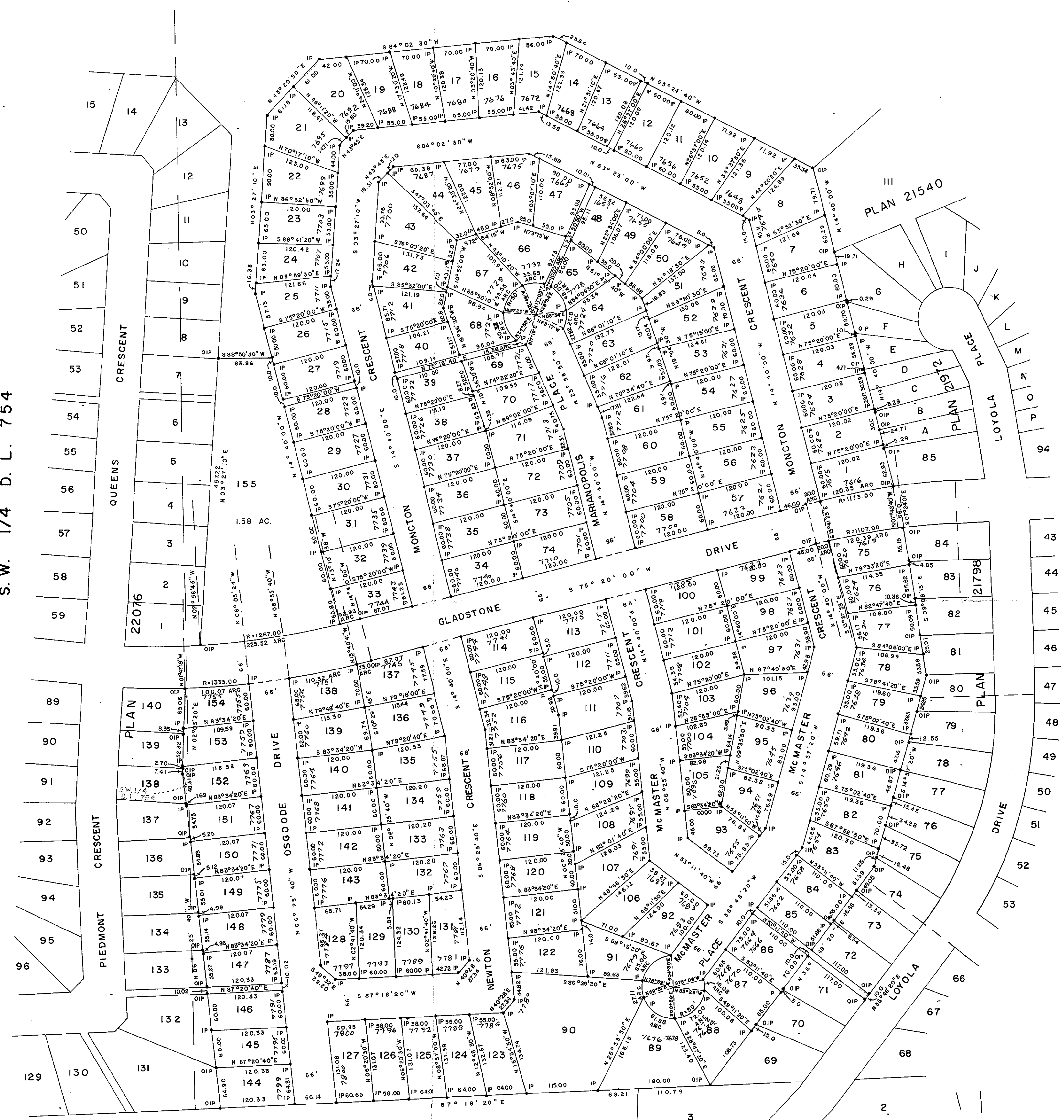
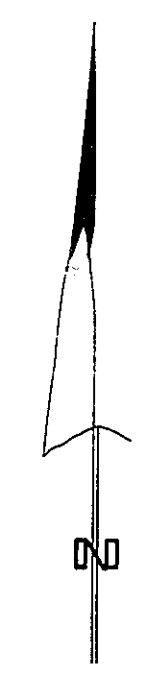
PLAN OF SUBDIVISION OF
PARTS OF S. E. 1/4 & S. W. 1/4
OF DISTRICT LOT 754
CARIBOO DISTRICT—BRITISH COLUMBIA

SCALE: 1" = 100'

NOTE: Bearings are astronomic, derived from the
south boundary of Gladstone Drive as shown
on Plan 22076.

LEGEND: •OIP denotes an old iron pin found.
•IP denotes an iron pin set.

S. W. 1/4 D. L. 754



HEIGHTS LAND DEVELOPMENT CO. LTD.

I, DONALD A. DUFFY of the City of Prince George,
a British Columbia Land Surveyor, make oath and say
that I was present at and did personally superintend
the survey represented by this plan and that the survey
and plan are correct. The said survey was completed
on the 16th day of JUNE, 1975.

[Signature]
B.C.L.S.

Sworn before me this 16th
day of JUNE, 1975.

[Signature]
A Commissioner for taking Affidavits
for British Columbia.

PLAN 9902
D. L. 2013

Approved under the Land Registry Act
this 22nd day of JULY, 1975.

[Signature]
Approving Officer, City of Prince George

This plan lies within the Fraser-Fort George
Regional District.