

PLAN OF SUBDIVISION OF  
LOTS 23 & 24, PLAN 9563  
DISTRICT LOT 2424  
CARIBOO DISTRICT - BRITISH COLUMBIA

SCALE: 1" = 100'

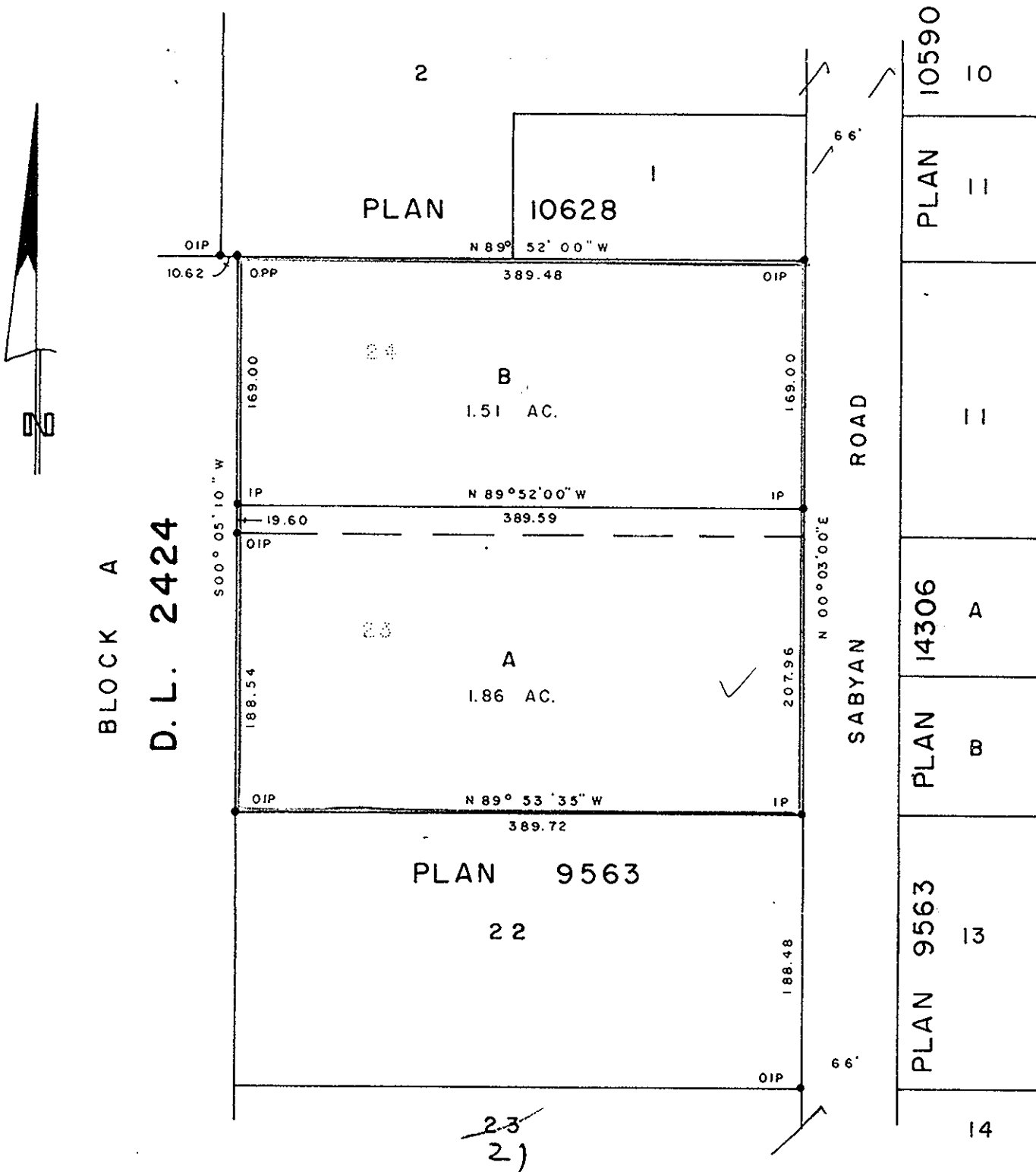
NOTE: Bearings are astronomic, derived from the east boundary of Lots 22, 23 & 24, Plan 9563.

LEGEND: •OPP denotes an old pipe post found.  
•OIP denotes an old iron pin found.  
•IP denotes an iron pin set.

PLAN N<sup>o</sup> 22183

Deposited in the Land Registry Office at Prince George, B.C. this 8<sup>th</sup> day of JULY, 1975.

E.T. SCHOOLEY  
Registrar



I, DONALD A. DUFFY of the City of Prince George, a British Columbia Land Surveyor, make oath and say that I was present at and did personally superintend the survey represented by this plan and that the survey and plan are correct. The said survey was completed on the 12th day of May, 1975.

*[Signature]*  
B.C.L.S.

Sworn before me this 21 day of MAY, 1975

*[Signature]*

A Commissioner for taking Affidavits for British Columbia.

Owner *Wanda Hege*

Witness *[Signature]*

Owner *F. Hege*

Witness *[Signature]*

Approved under the Land Registry Act this 8<sup>th</sup> day of JULY, 1975

*[Signature]*  
Approving Officer, City of Prince George

This plan lies within the Fraser-Fort George Regional District.