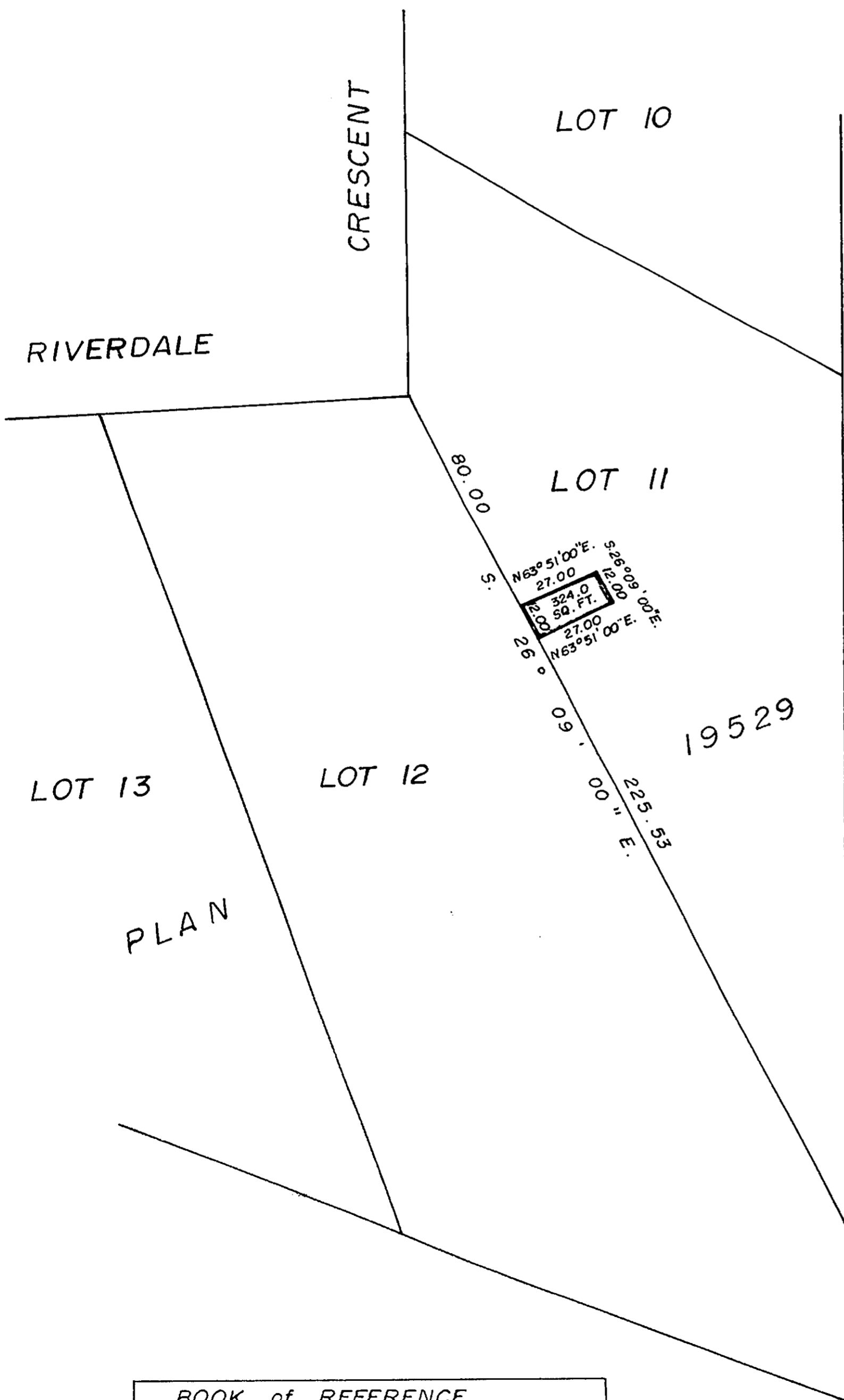


PLAN No. 22177
 DEPOSITED IN THE LAND REGISTRY OFFICE AT
 PRINCE GEORGE THIS 19. DAY OF JULY 1975.

EXPLANATORY PLAN of EASEMENT
 IN LOT II, PLAN 19529,
 D.L. 2101, CARIBOO DISTRICT.
 SCALE : 1" = 50'

E.T. SCHOOLEY
 REGISTRAR
 per: *ES*



East 1/2 D.L. 2101



CERTIFIED CORRECT
 ACCORDING TO LAND REGISTRY OFFICE
 RECORDS THIS 20 DAY OF June 1975

Victor Bartell
 V. BARTELL, B.C.L.S.

THIS PLAN LIES WITHIN THE FRASER
 FORT GEORGE REGIONAL DISTRICT.

BOOK of REFERENCE	
DESCRIPTION	AREA
Lot 11, Plan 19529	324.0 sq. ft.

McWILLIAM, WHYTE, GOBLE & ASSOCIATES,
 B.C. LAND SURVEYORS,
 PRINCE GEORGE — SMITHERS — KAMLOOPS.

REF. NO. 75114 (2101)