

EXPLANATORY PLAN OF EASEMENT THROUGH
LOT 5, PLAN 19954
DISTRICT LOT 2101
CARIBOO DISTRICT—BRITISH COLUMBIA

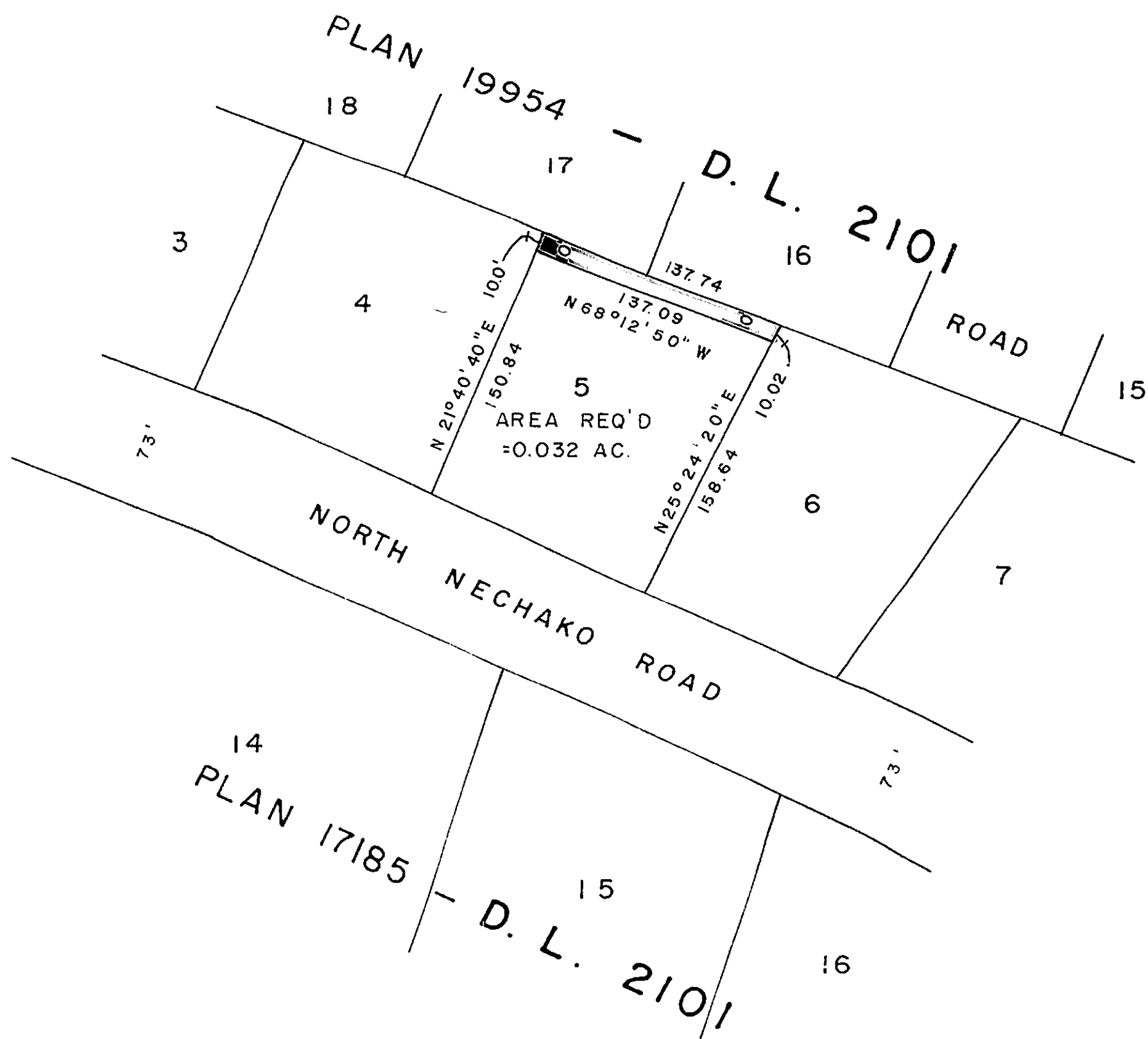
SCALE: 1" = 100'

PLAN No **22174**


Deposited in the Land Registry
Office at Prince George, B.C. this
4 day of **JULY**, 1975.

E.T. SCHOOLEY
Registrar

707: **ES**



CERTIFIED CORRECT
According to information shown
on Plan 19954.


D. A. DUFFY, B.C.L.S.
JUNE 18 th, 1975.

This plan lies within the Fraser-Fort George
Regional District.

W. D. USHER & ASSOCIATES
LAND SURVEYORS
PRINCE GEORGE — B. C.