

22173

PLAN OF SUBDIVISION OF
LOTS 18, 19, 37 & 38, BLOCK 9 &
LOTS 18 & 19, BLOCK 10, PLAN 796
DISTRICT LOT 932
CARIBOO DISTRICT - BRITISH COLUMBIA

PLAN N^o 22173

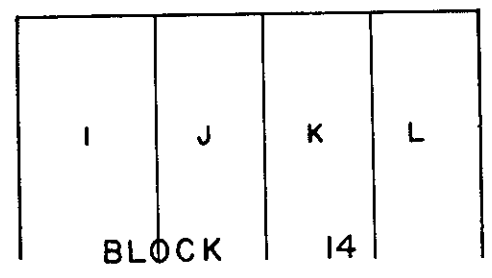
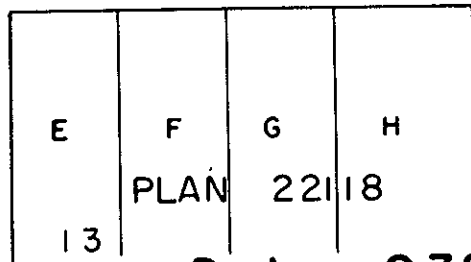
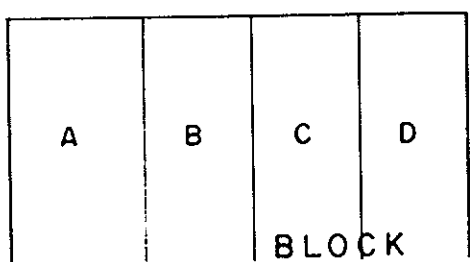
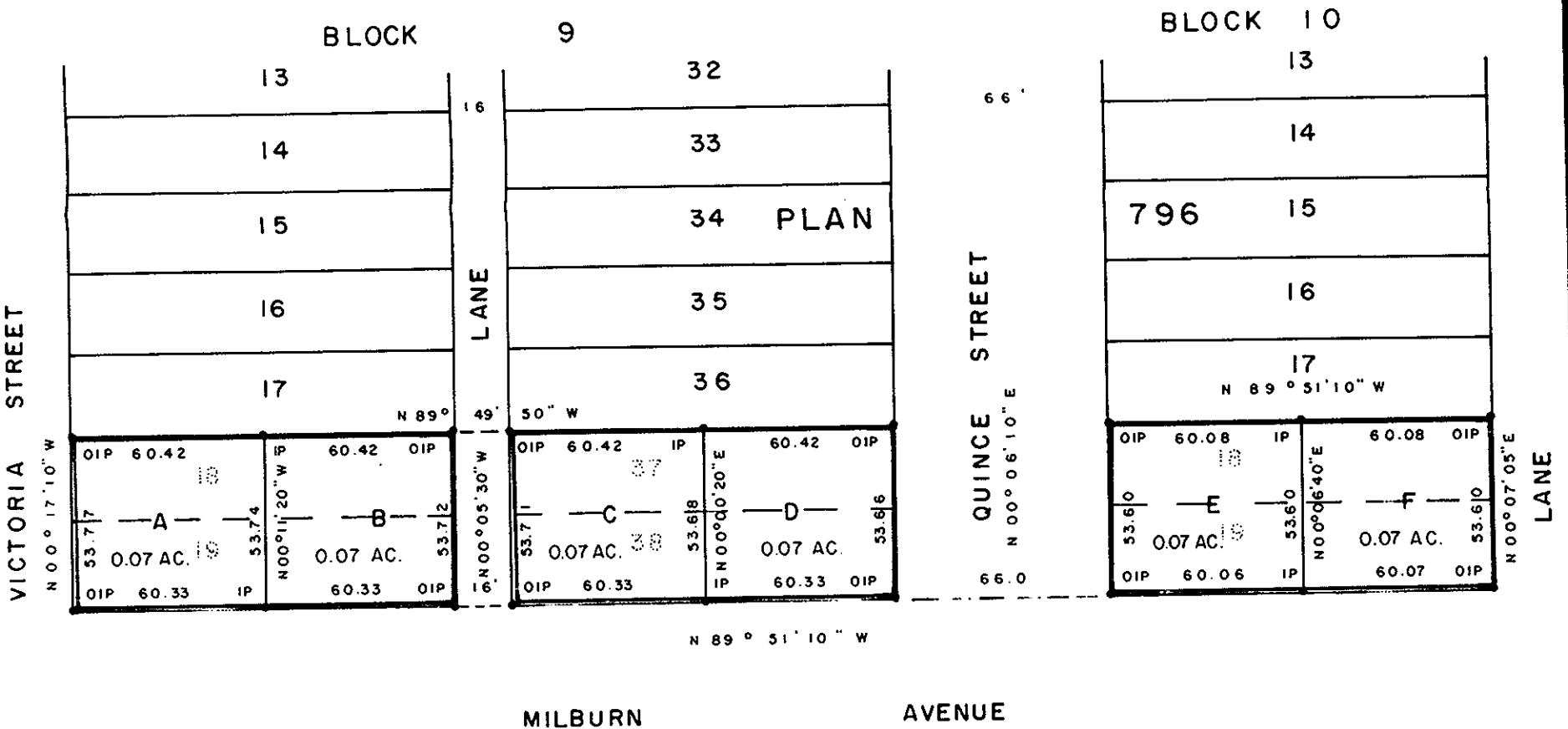
Deposited in the Land Registry
Office at Prince George, B.C. this
4 day of JULY, 1975

SCALE: 1" = 50'

NOTE: Bearings are astronomic, derived from the north
boundary of Milburn Avenue as shown on Plan 21933.

LEGEND: *OIP denotes an old iron pin found.
*IP denotes an iron pin set.

E.T. SCHOOLEY
Registrar



D. L. 932

I, DONALD A. DUFFY of the City of Prince George,
a British Columbia Land Surveyor, make oath and say
that I was present at and did personally superintend
the survey represented by this plan and that the survey
and plan are correct. The said survey was completed
on the 3 day of MARCH, 1975

BELWOOD ENTERPRISES LTD.

Approved under the Land Registry Act
this 10th day of JUNE, 1975

[Signature]
B.C.L.S.

[Signature]
Res: PRESIDENT

[Signature]
Approving Officer, City of Prince George

Sworn before me this 5
day of MARCH, 1975

This plan lies within the Fraser-Fort George
Regional District.

[Signature]
A Commissioner for taking Affidavits
for British Columbia.