

PLAN OF EASEMENT THROUGH
 LOT 27, PLAN 19529
DISTRICT LOT 2101
 CARIBOO DISTRICT-BRITISH COLUMBIA

SCALE: 1" = 40'

NOTE: Bearings are astronomic, derived from the west boundary of Lot 27, Plan 19529.

LEGEND: •OIP denotes an old iron pin found.
 •IP denotes an iron pin set.

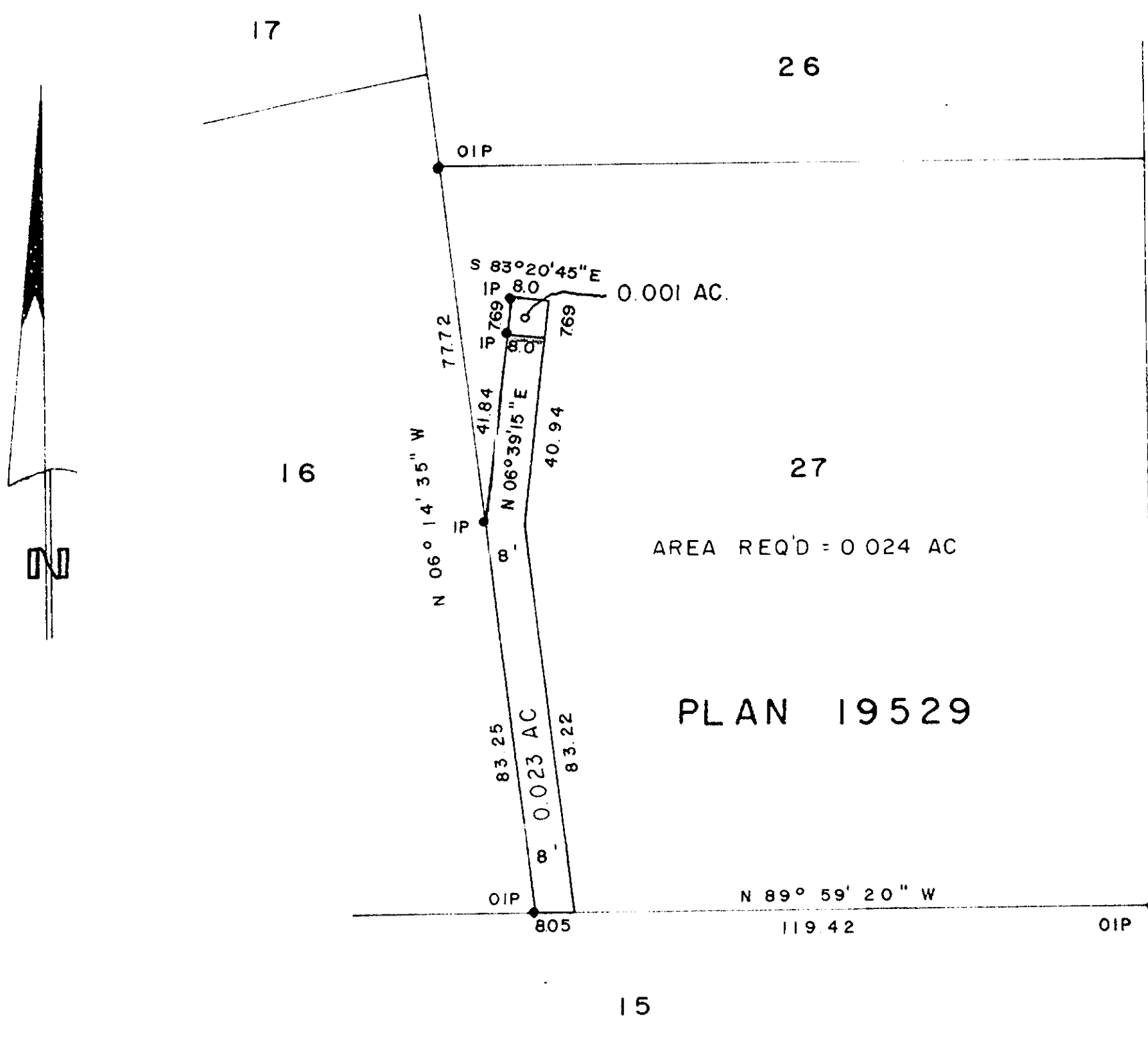
PLAN N^o **22164**

Deposited in the Land Registry Office at Prince George, B.C. this 27 day of JUNE, 1975.

E.T. SCHOOLEY
 Registrar

per: *ES*

D. L. 2101



D. L. 2101

I, DONALD A. DUFFY of the City of Prince George, a British Columbia Land Surveyor, make oath and say that I was present at and did personally superintend the survey represented by this plan and that the survey and plan are correct. The said survey was completed on the 27 day of JUNE, 1975.

[Signature]
 B.C.L.S.

Sworn before me this 25 day of JUNE, 1975

[Signature]
 A Commissioner for taking Affidavits for British Columbia.

This plan lies within the Fraser-Fort George Regional District.