

PLAN OF SUBDIVISION OF
 LOT A, PLAN 17115 & LOT G, PLAN 5796
DISTRICT LOT 1429
 CARIBOO DISTRICT - BRITISH COLUMBIA

Handwritten: PLOTTED HM

SCALE: 1" = 40'

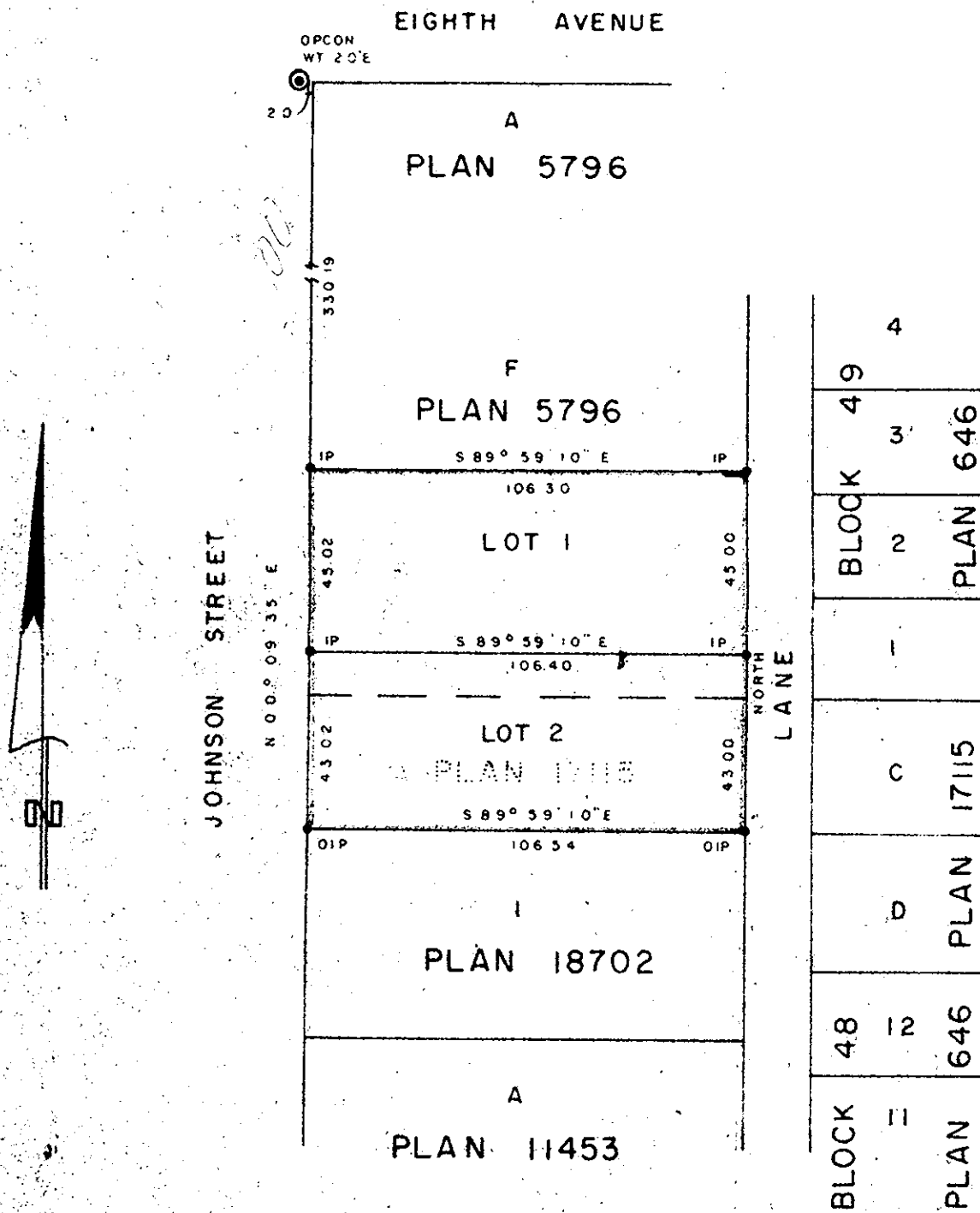
PLAN No **22 131**

NOTE: Bearings are astronomic, derived from the east boundary of Johnson Street as shown on Plan 17115.

Deposited in the Land Registry Office at Prince George, B.C. this 12 day of JUNE, 1975.

LEGEND: \odot OPCON denotes an old concrete monument found.
 • OIP denotes an old iron pin found.
 • IP denotes an iron pin set.
 WT denotes witness.

E.T. SCHOOLEY
 Registrar



D.L. 1429

I, DONALD A. DUFFY of the City of Prince George, a British Columbia Land Surveyor, make oath and say that I was present at and did personally superintend the survey represented by this plan and that the survey and plan are correct. The said survey was completed on the 10 day of MAY, 1975.

BREADNER CONSTRUCTION LTD.

Approved under the Land Registry Act this 3rd day of JUNE, 1975.

Signature of President
 President

Signature of Approving Officer
 Approving Officer, City of Prince George

Sworn before me this 21 day of MAY, 1975

Signature of Commissioner
 A Commissioner for taking Affidavits for British Columbia

This plan lies within the Fraser-Fort George Regional District.