

RECEIVED

JUN 23 1975

Copy sent to records June 23/75

PLAN OF SUBDIVISION OF PART OF LOT 1, PLAN 21351  
DISTRICT LOT 2424  
CARIBOO DISTRICT - BRITISH COLUMBIA

SCALE: 1" = 100'

NOTE: Bearings are astronomic, derived from the west boundary of Lot 1, Plan 21351.

LEGEND: • OIP denotes an old iron pin found.  
• IP denotes an iron pin set.

B.C. ASSESSMENT AUTHORITY

PLAN No. 22 129

Deposited in the Land Registry Office at Prince George, B.C. this 21 day of JUNE, 1975.

E.T. SCHOOLEY, Registrar

3  
PLAN 19668

ROAD

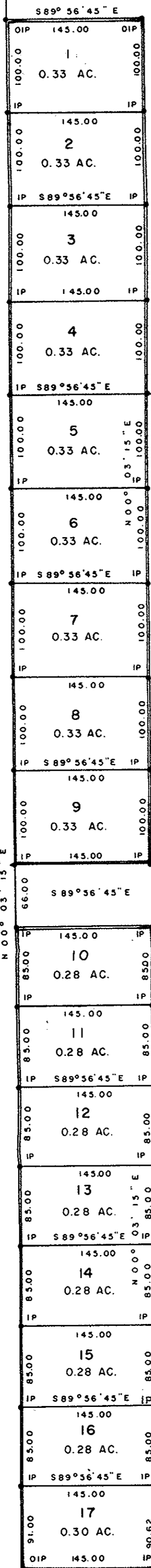
LOT 1  
PLAN 21853

3

PLAN 20767

2

6.6' ROAD  
N 0° 03' 15" E



REMAINDER OF LOT 1 - PLAN 21351

120' ROAD

PLAN 21853

4

D. L. 2424

5

D. L. 2424

2 - PLAN 21351

447.10

OIP

N 89° 54' 05" E

I, DONALD A. DUFFY of the City of Prince George, a British Columbia Land Surveyor, make oath and say that I was present at and did personally superintend the survey represented by this plan and that the survey and plan are correct. The said survey was completed on the 7th day of November, 1974.

*[Signature]*  
B.C.L.S.

Sworn before me this 14th day of May, 1975.

*[Signature]*  
A Commissioner for taking Affidavits for British Columbia.

S.W. 1/4 D.L. 2424

DOMAGALA HOLDINGS LTD.

*[Signature]*  
Tel Domagala Pres.

Approved under the Land Registry Act this 10th day of JUNE, 1975.

*[Signature]*  
Approving Officer, City of Prince George

This plan lies within the Fraser-Fort George Regional District.

W. D. USHER & ASSOCIATES  
LAND SURVEYORS  
PRINCE GEORGE - B.C.