

RECEIVED

JUN 23 1975

PLAN OF SUBDIVISION OF
LOT 38 AND PART OF LOT 37, PLAN 21450
DISTRICT LOTS 2507 & 2610
CARIBOO DISTRICT - BRITISH COLUMBIA

B.C. ASSESSMENT
AUTHORITY

PLAN No 22109

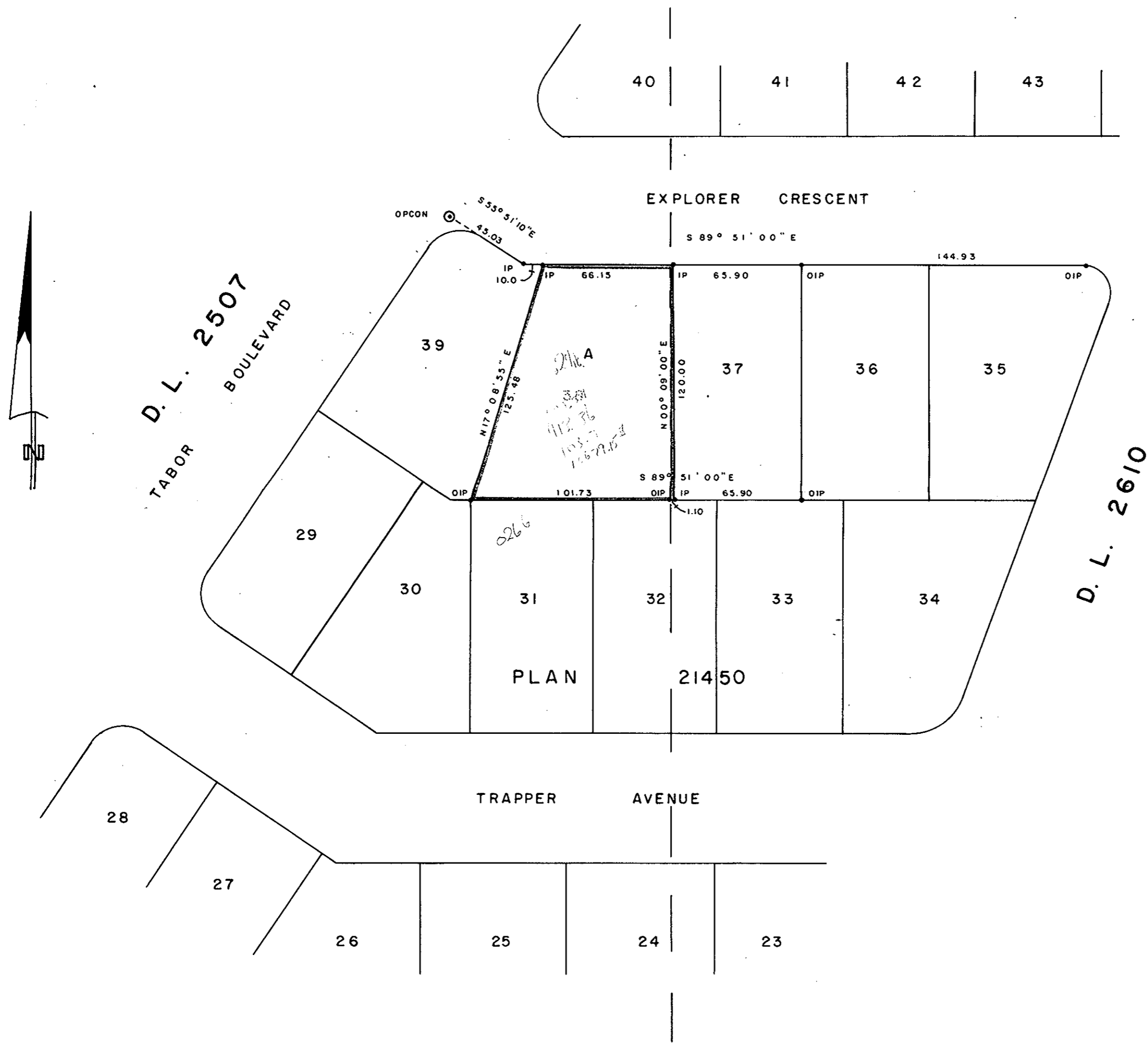
Deposited in the Land Registry
Office at Prince George, B.C. this
22nd day of MAY, 1975

SCALE: 1" = 50'

NOTE: Bearings are astronomic, derived from the south
boundary of Lots 37 and 38, Plan 21450.

LEGEND: OOPCON denotes an old concrete monument found.
*OIP denotes an old iron pin found.
•IP denotes an iron pin set.

E. T. SCHOOLEY
Registrar



I, DONALD A. DUFFY of the City of Prince George, a British Columbia Land Surveyor, make oath and say that I was present at and did personally superintend the survey represented by this plan and that the survey and plan are correct. The said survey was completed on the 23 day of APRIL, 1975

[Signature]
B.C.L.S.

HEPWOOD CONTRACTING LTD.

[Signature]
PRES.

BANK OF MONTREAL

PER: *[Signature]*
A. HINCHLIFFE
MANAGER OF PRINCE GEORGE
MAIN BRANCH

Approved under the Land Registry Act
this 29th day of APRIL, 1975

[Signature]
Approving Officer, City of Prince George

Sworn before me this 9th
day of JULY, 1975

[Signature]
A Commissioner for taking Affidavits
for British Columbia.

This plan lies within the Fraser-Fort George
Regional District.

W. D. USHER & ASSOCIATES
LAND SURVEYORS
PRINCE GEORGE B.C.
HQ 64 6919