

PLAN OF SUBDIVISION
 PREPARED PURSUANT TO RE-PLOTTING
 OF THE MUNICIPAL ACT, OF
 ASSIGNED PARCEL "A" OF REFERENCE
 DISTRICT LOTS 492 & 2507,
 CARIBOO DISTRICT

SCALE ~ 1 INCH = 100 FEET

AREA WITHIN RED OUTLINE = 80.02 AC.

CURVE DATA

A - $\Delta 90^{\circ}00'00''$ RADIUS 20.00 ST. 20.00 ARC 31.42
B - $\Delta 89^{\circ}56'05''$ RADIUS 20.02 ST. 20.00 ARC 31.43
C - $\Delta 90^{\circ}03'55''$ RADIUS 19.98 ST. 20.00 ARC 31.40
D - $\Delta 90^{\circ}06'46''$ RADIUS 20.00 ST. 20.00 ARC 31.41
E - $\Delta 89^{\circ}59'50''$ RADIUS 20.00 ST. 20.00 ARC 31.41

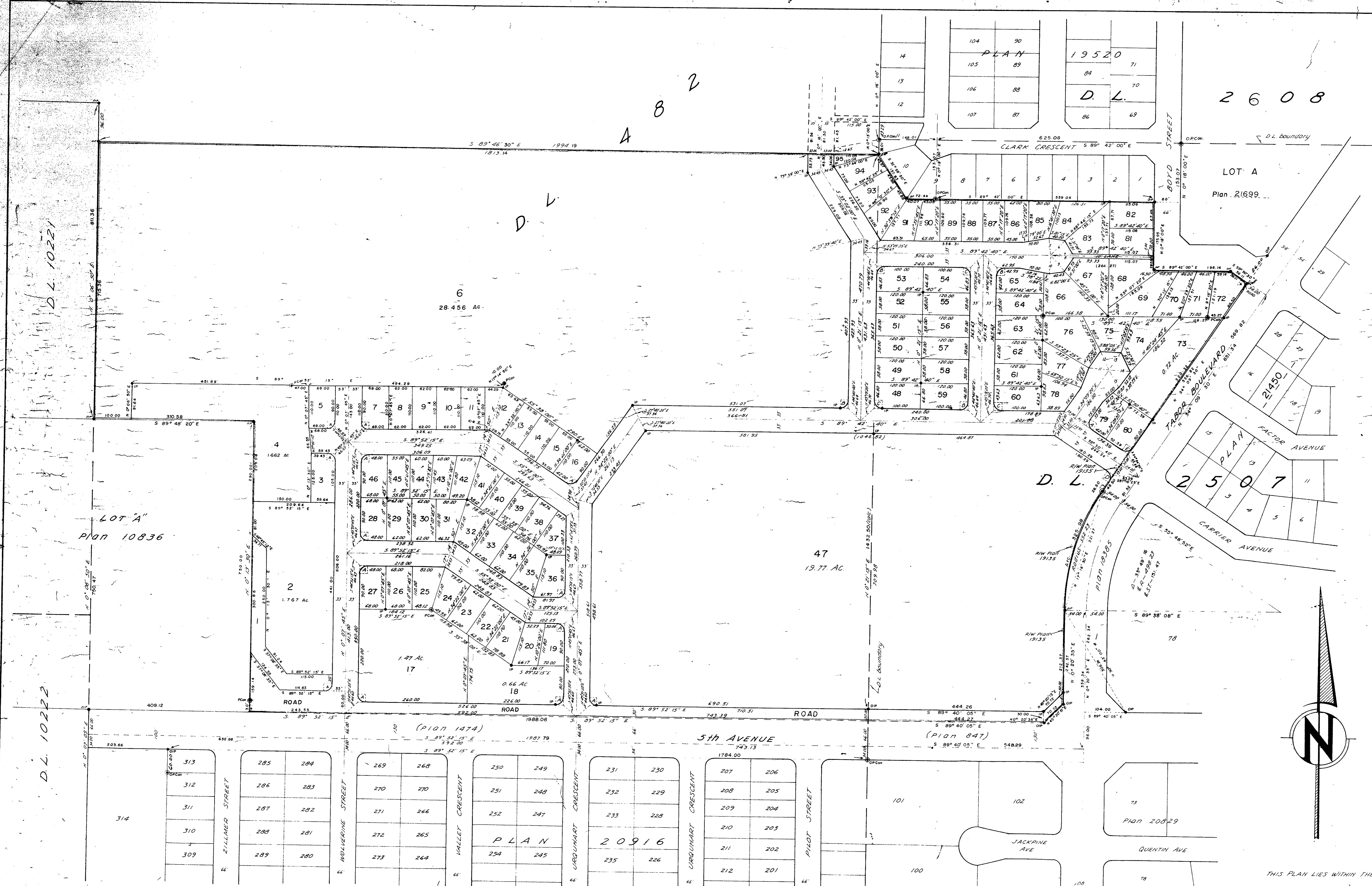
NO.	BEARING	DISTANCE
1	N. 61° 22' 20" E.	47.02
2	N. 40° 10' 25" E.	53.19
3	N. 85° 10' 30" E.	56.10
4	S. 84° 35' 50" E.	56.10
5	S. 39° 55' 30" E.	53.53
6	S. 6° 56' 10" W.	47.02
7	N. 83° 46' 35" W.	52.75
8	N. 29° 18' 50" W.	56.30
9	N. 54° 09' 20" E.	56.32
10	S. 84° 13' 30" E.	57.47
11	S. 27° 53' 05" E.	52.77

Approved as to dedication of Roads:
 BRITISH COLUMBIA HYDRO & POWER AUTHORITY
Wilson
 Director
 E. B. Ludwell
 Associate Secretary

Approved under the Land Registry Act
 this 18th day of December 1974
OSBY
 Approving Officer,
 City of Prince George

The Seal of the City of Prince George
 was affixed hereto in the presence of:
Hammill
 Mayor
Palmer
 City Clerk

THIS PLAN LIES WITHIN THE FRASER-FORT GEORGE REGIONAL DISTRICT



D.L. 10221

D.L. 10222

