

RECEIVED

JUN 23 1975

PLAN OF SUBDIVISION OF PART OF  
LOT 23, PLAN 7787  
DISTRICT LOT 913  
CARIBOO DISTRICT— BRITISH COLUMBIA

B.C. ASSESSMENT  
AUTHORITY

22104

PLAN N<sup>o</sup> \_\_\_\_\_

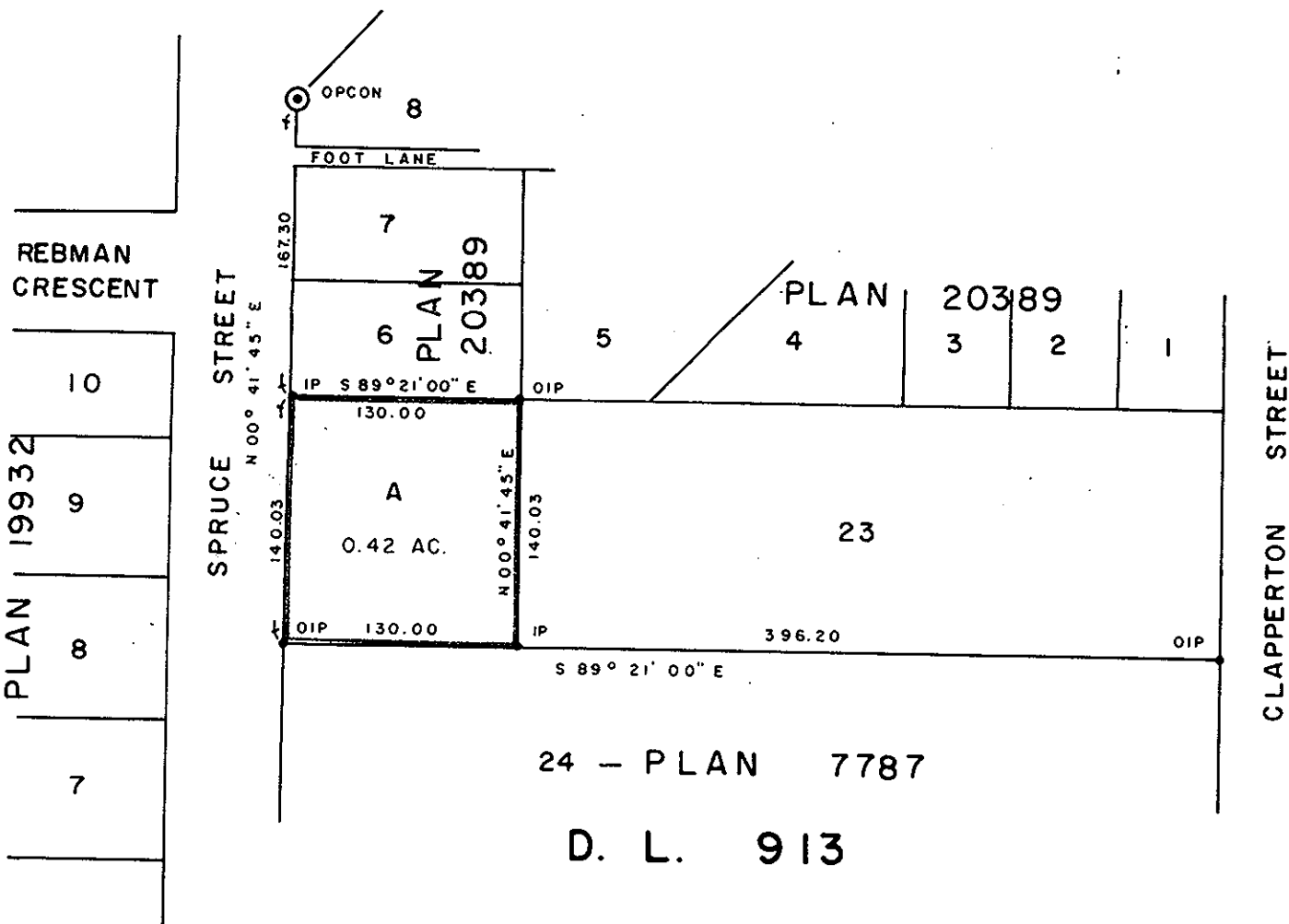
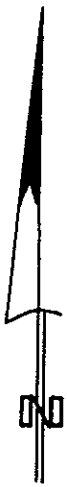
Deposited in the Land Registry  
Office at Prince George, B.C. this  
16 day of MAY, 1975.

SCALE: 1" = 100'

NOTE: Bearings are astronomic, derived from the east  
boundary of Spruce Street, as shown on Plan  
20389.

E. T. SCHOOLEY  
Registrar

LEGEND: ⊙ OPCON denotes an old concrete monument found.  
• OIP denotes an old iron pin found.  
• IP denotes an iron pin set.



I, DONALD A. DUFFY of the City of Prince George, a British Columbia Land Surveyor, make oath and say that I was present at and did personally superintend the survey represented by this plan and that the survey and plan are correct. The said survey was completed on the 24 day of FEB, 1975.

*[Signature]*  
B.C.L.S.

Sworn before me this 26 day of FEB, 1975

A Commissioner for taking Affidavits for British Columbia.

Owner *[Signature]*

Witness *[Signature]*

Owner \_\_\_\_\_

Witness \_\_\_\_\_

Approved, under the Land Registry Act this 6<sup>th</sup> day of MAR, 1975

*[Signature]*  
Approving Officer, City of Prince George

This plan lies within the Fraser-Fort George Regional District.