

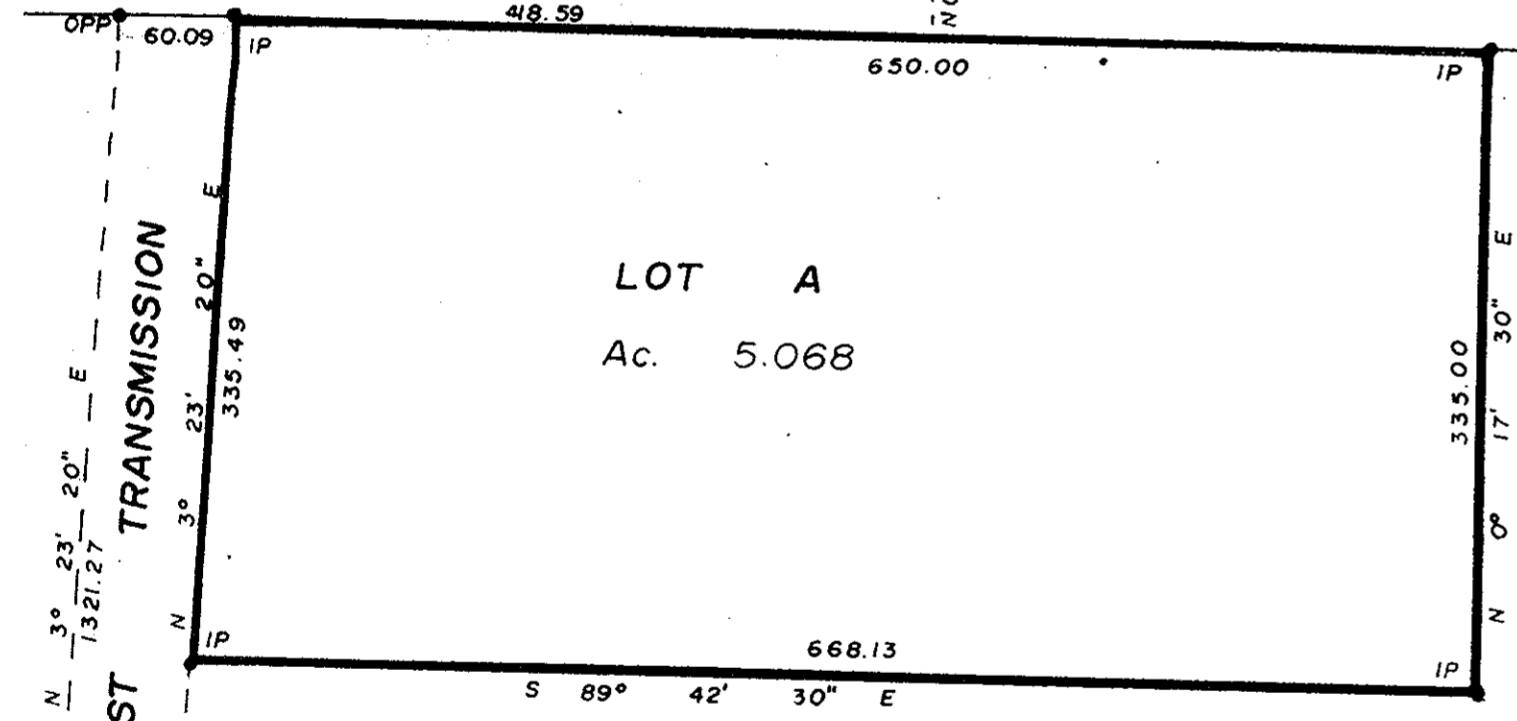
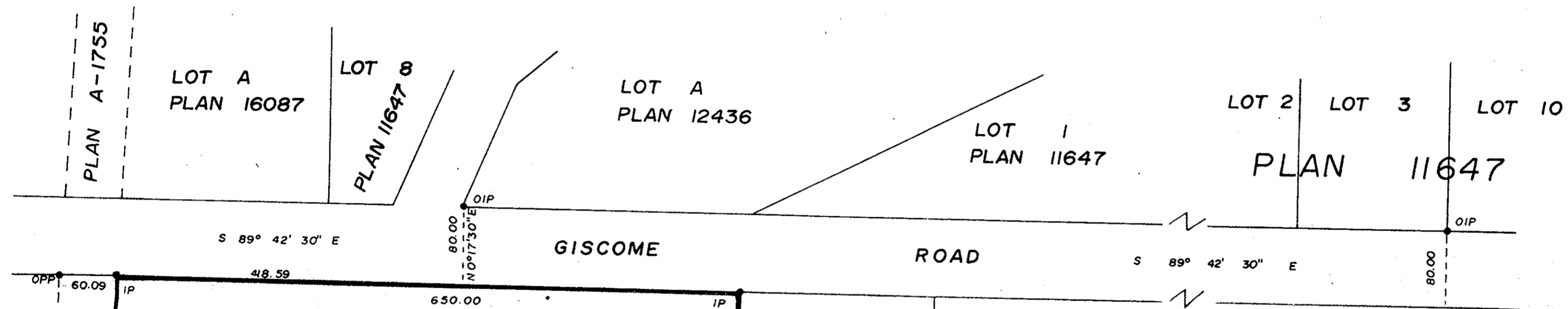
PLAN OF SUBDIVISION OF PART OF
N.W. 1/4 OF DISTRICT LOT 634
CARIBOO DISTRICT - BRITISH COLUMBIA
SCALE: 1" = 100'

PLAN No 22 102
Deposited in the Land Registry Office at
PRINCE GEORGE on the 16. day of MAY 1975.

RECEIVED E.T. SCHOOLEY
Registrar JUL 03 1975

B.C. ASSESSMENT
AUTHORITY

D.L. 633



N.W. 1/4 D.L. 634

Bearings are astronomic and are derived from
OIPS on North BDY GISCOME ROAD shown as
S 89° 42' 30" E on PLAN 11647.

- P.con. Standard Concrete Post.
- P.Rock Standard Rock Post.
- PP Standard Pipe Post.
- I.P. Standard Iron Post.
- P. Wooden Post.
- L.P. Lead Plug.
- Denoting "Old"
- WT. Denoting "Witness"
- CIP. Capped Iron Post

I, A. DANILUCK of the CITY OF PRINCE GEORGE
British Columbia Land Surveyor, make oath and
say that I was present at and did personally
superintend the survey represented by this
plan and that the survey and plan are correct.
The said survey was completed on
the 27. th. day of December 1972.

A. Daniluck
A. DANILUCK, B.C.L.S.

Sworn before me at PRINCE GEORGE
this 2. sd. day of January 1973.

Approved under the Land Registry Act
on the 5. th. day of FEBRUARY 1973.

John Whyte
Approving Officer
Dept. of Highways
Reapproved April 20, 1975
CITY OF PRINCE GEORGE
This plan lies within the FRASER
FORT-GEORGE Regional District.

A. Wilson
A commissioner for taking affidavits
for British Columbia.

Owner *John Parker*

Witness *J. Dobbie*

John Whyte
John Whyte
J. Dobbie

McWilliam-Whyte-Goble & Associates
B.C. LAND SURVEYORS
PRINCE GEORGE | SMITHERS | KAMLOOPS
REF No: 72215