

RECEIVED

JUN 23 1975

PLAN OF SUBDIVISION OF
LOT 5, PLAN 16708 & PART OF
LOT C, PLAN 20492
DISTRICT LOT 2433
CARIBOO DISTRICT - BRITISH COLUMBIA

B.C. ASSESSMENT
AUTHORITY

PLAN N^o 22091

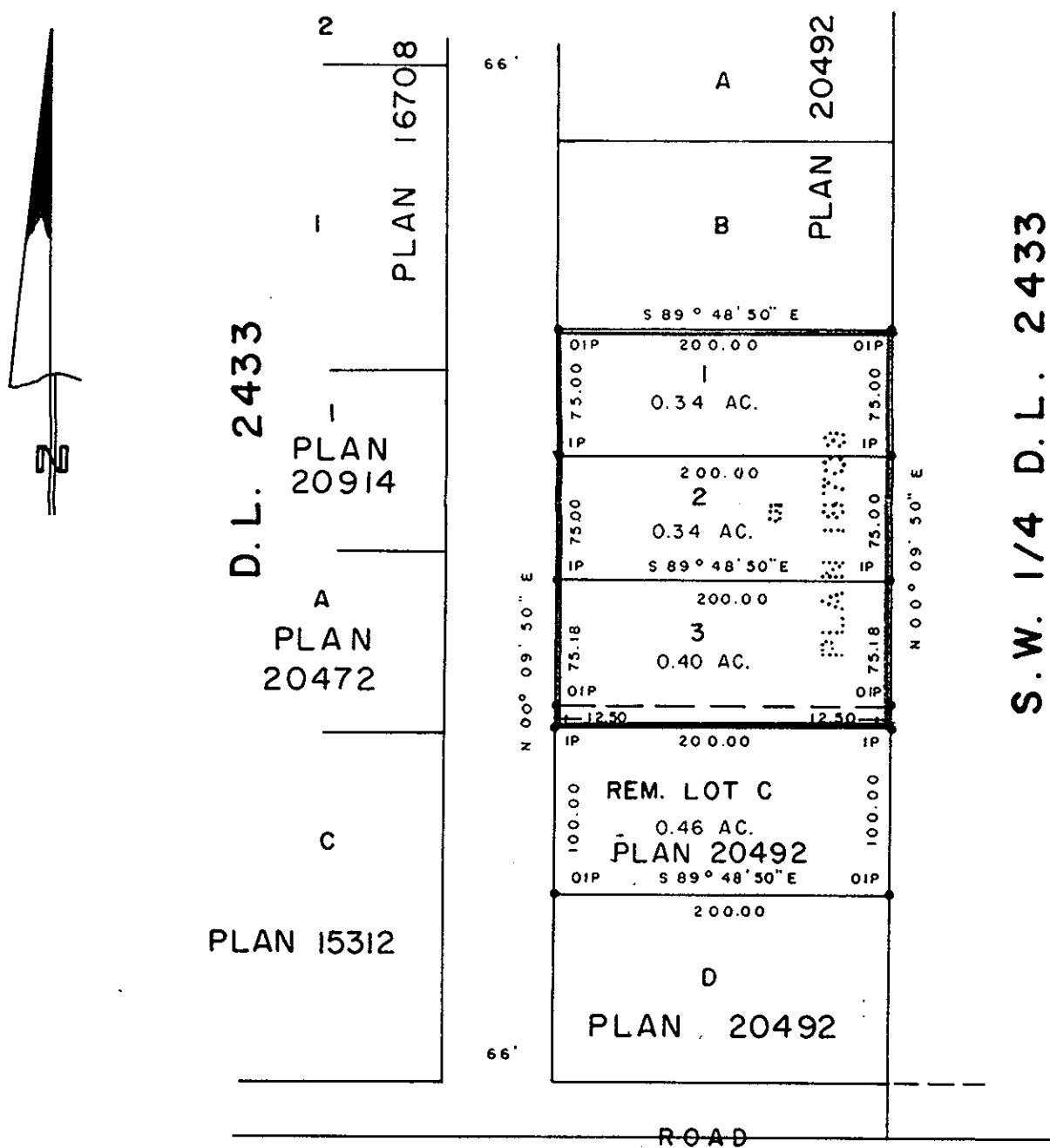
Deposited in the Land Registry
Office at Prince George, B.C. this
6. day of MAY, 1975

SCALE: 1" = 100'

NOTE: Bearings are astronomic, derived from the
west boundary of Lot 5, Plan 16708.

LEGEND: •OIP denotes an old iron pin found.
•IP denotes an iron pin set.

E.T. SCHOOLEY
Registrar



D.L. 2433

S.W. 1/4 D.L. 2433

3	4	5	6	7
	PLAN	15486	D.L.	4047

I, DONALD A. DUFFY of the City of Prince George, a British Columbia Land Surveyor, make oath and say that I was present at and did personally superintend the survey represented by this plan and that the survey and plan are correct. The said survey was completed on the 4th day of October, 1974.

[Signature]
B.C.L.S.

Sworn before me this 17 day of APRIL, 1975

[Signature]
A Commissioner for taking Affidavits for British Columbia.

GLENVIEW ESTATES LTD.
[Signature]
PRESIDENT

Approved under the Land Registry Act this 26th day of MAR, 1975

[Signature]
Approving Officer, City of Prince George

This plan lies within the Fraser-Fort George Regional District.