

PLAN of SUBDIVISION

of LOTS 1 to 5 and LOTS 20 to 24

BLOCK 209, PLAN 1268

and CLOSED LANE as shown on BY-LAW PLAN 22 085

DISTRICT LOT 343

CARIBOO DISTRICT

PLAN NO: 22086

DEPOSITED IN THE LAND REGISTRY OFFICE AT PRINCE GEORGE THIS 5. DAY OF MAY 1975.

E.T. SCHOOLEY
REGISTRAR

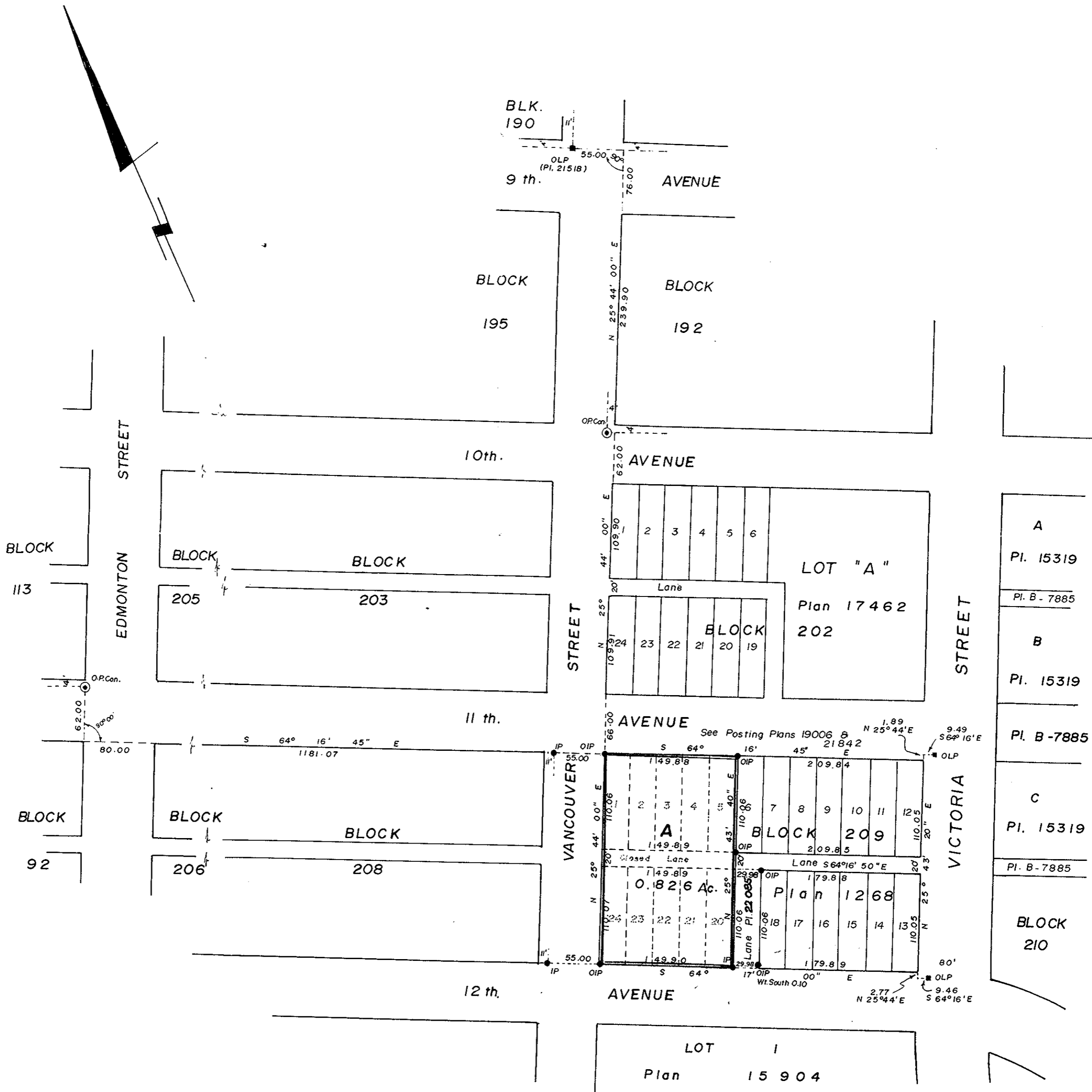
RECEIVED

APR 28 1975

B.C. ASSESSMENT
AUTHORITY

Scale: 1" = 100'

21883
21972
21985



I, V. BARTELL, OF THE CITY OF PRINCE GEORGE, BRITISH COLUMBIA LAND SURVEYOR MAKE OATH AND SAY THAT I WAS PRESENT AT AND DID PERSONALLY SUPERINTEND THE SURVEY REPRESENTED BY THIS PLAN, AND THAT THE SURVEY AND PLAN ARE CORRECT. THE SAID SURVEY WAS COMPLETED ON THE 23. DAY OF January, 1975

BEARINGS ARE ASTRONOMIC AND ARE DERIVED FROM PLAN 21518

APPROVED UNDER THE LAND REGISTRY ACT THIS 23. DAY OF APRIL 1975

V. Bartell
B.C.L.S.

SWORN BEFORE ME AT PRINCE GEORGE THIS 23. DAY OF January 1975

- P Con ... STANDARD CONCRETE POST
- PP ... STANDARD PIPE POST
- CIP ... STANDARD CAPPED IRON POST
- IP ... STANDARD IRON POST
- BT ... BEARING TREE
- O ... DENOTING 'OLD'
- LP ... LEAD PLUG IN CONCRETE CURB

THIS PLAN LIES WITHIN THE FRASER-FORT GEORGE REGIONAL DISTRICT

C. E. Dist.
APPROVING OFFICER - CITY OF PRINCE GEORGE

OWNER

WITNESS

A COMMISSIONER FOR TAKING AFFIDAVITS FOR BRITISH COLUMBIA

McWILLIAM - WHYTE - GOBLE & ASSOCIATES
B.C. LAND SURVEYORS
KAMLOOPS - SMITHERS - PRINCE GEORGE

REF. NO.: 74 328 - A