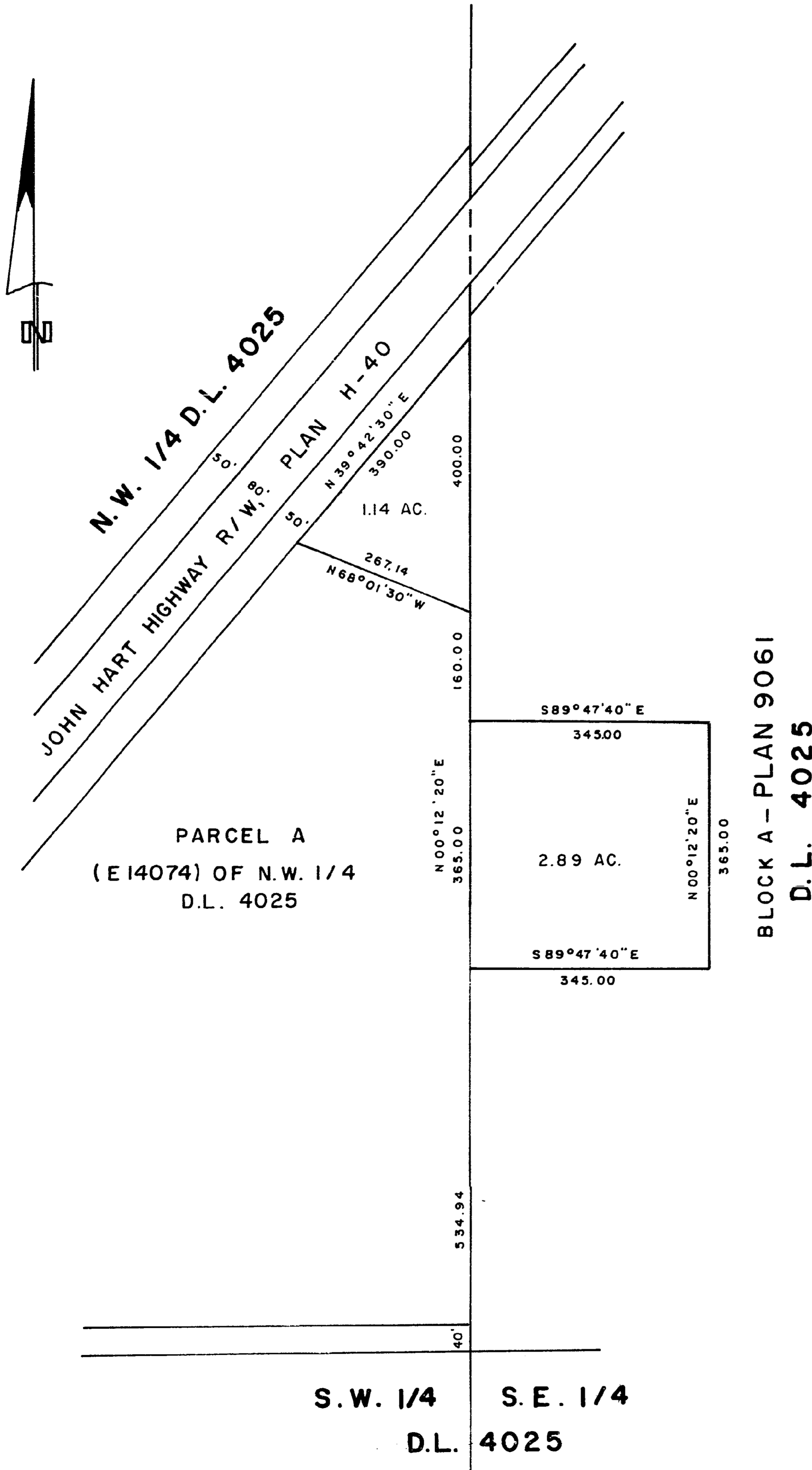


EXPLANATORY PLAN OF EASEMENT THROUGH  
PARTS OF BLOCK A , PLAN 9061 &  
PARCEL A (E14074) OF N.W. 1/4 OF  
DISTRICT LOT 4025  
CARIBOO DISTRICT - BRITISH COLUMBIA

SCALE: 1" = 200'

PLAN N<sup>o</sup> 22 049  
Deposited in the Land Registry  
Office at Prince George, B.C. this  
11 day of APRIL, 1975.

E.T. SCHOOLEY  
Registrar *ES*



CERTIFIED CORRECT

This 20 day of MARCH, 1974.  
According to plans of record in the Prince  
George Land Registry Office.

*[Signature]*  
D.A. DUFFY, P.O.I.S.

W. D. USHER & ASSOCIATES  
LAND SURVEYORS  
PRINCE GEORGE — B. C.