

PLAN OF RIGHT-OF-WAY THROUGH
LOT 12, PLAN
DISTRICT LOT 2432
CARIBOO DISTRICT-BRITISH COLUMBIA

SCALE: 1" = 100'

NOTE: Bearings are astronomic, derived from the diameter of the cul-de-sac fronting on Lot 12, Plan

LEGEND: •OIP denotes an old iron pin found.
•IP denotes an iron pin set.

PLAN No 22 027

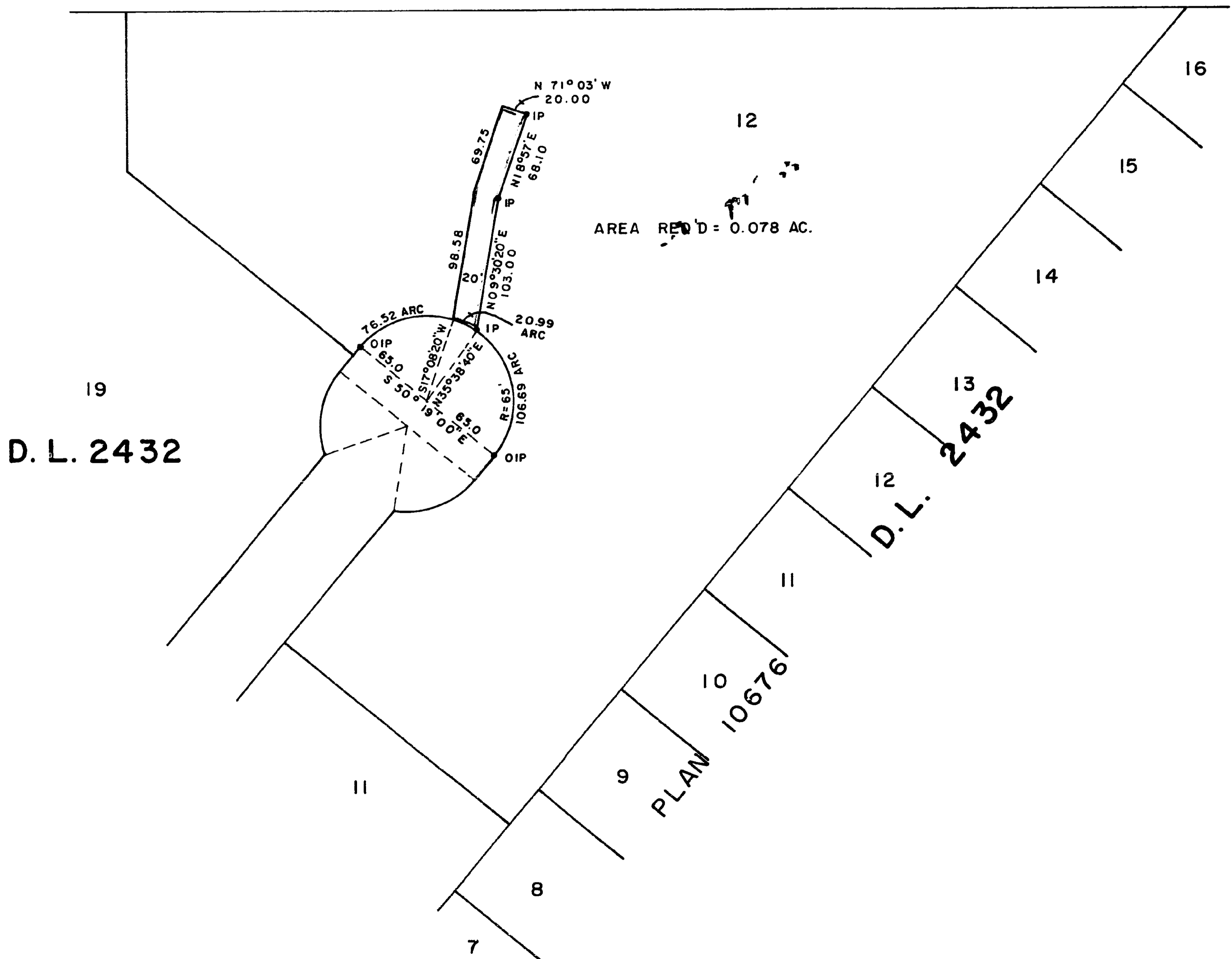
Deposited in the Land Registry Office at Prince George, B.C. this ___ day of APRIL, 1975

E.T. SCHOOLEY
Registrar

per: *ES.*



N. W. 1/4 D. L. 2432



I, DONALD A. DUFFY of the City of Prince George, a British Columbia Land Surveyor, make oath and say that I was present at and did personally superintend the survey represented by this plan and that the survey and plan are correct. The said survey was completed on the 18 day of NOV 1974

[Signature]
B.C.L.S.

Sworn before me this 22 day of DECEMBER, 1974

[Signature]
A Commissioner for taking Affidavits for British Columbia.

Approved under the Land Registry Act this 20 day of DECEMBER, 1974

[Signature]
Approving Officer, Dept. of Highways.

This plan lies within the Fraser-Fort George Regional District.