

**EXPLANATORY PLAN OF RIGHT-OF-WAY OVER
PORTIONS OF LOTS 34 AND 35, DISTRICT LOT 753,
CARIBOO DISTRICT, PLAN 20510.**

SCALE: 1 INCH = 40 FEET
BEARINGS ARE ASTRONOMIC, DERIVED FROM PLAN 20510

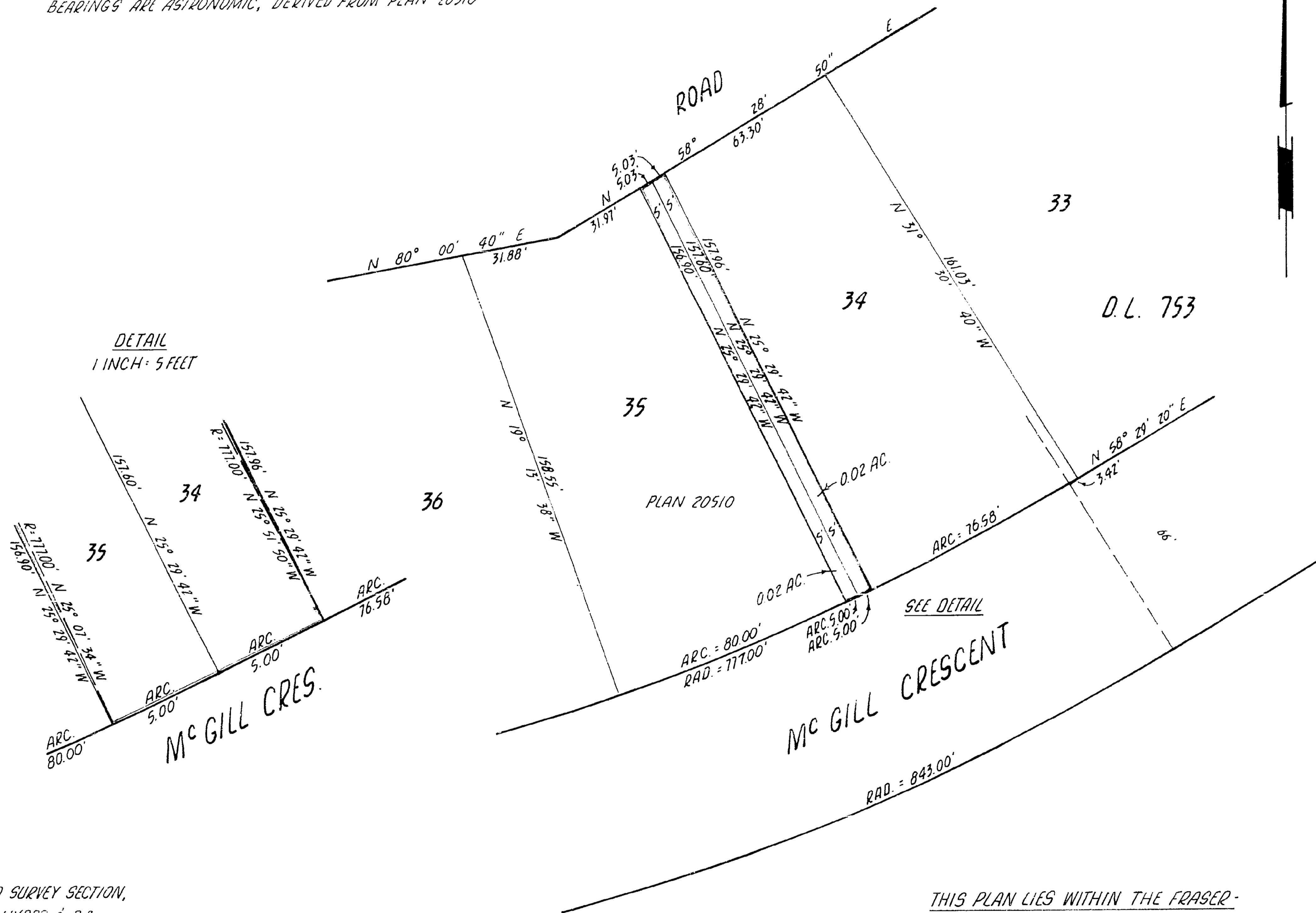
PLAN 22 013

DEPOSITED IN THE LAND REGISTRY
OFFICE AT PRINCE GEORGE, B.C.
THIS 24 DAY OF MARCH, 1975.

E.T. SCHOOLEY,
REGISTRAR
DEP: *ES*

DEPOSITED PURSUANT TO SECTION
118(h) OF THE LAND REGISTRY ACT.

BOOK OF REFERENCE	
DESCRIPTION	AREA
LOT 34, D.L. 753, CARIBOO DISTRICT, PLAN 20510	0.02 AC.
LOT 35, D.L. 753, CARIBOO DISTRICT, PLAN 20510	0.02 AC.



SEE DETAIL

THIS PLAN LIES WITHIN THE FRASER-FORT GEORGE REGIONAL DISTRICT.

LAND SURVEY SECTION,
B.C. HYDRO & P.A.
8781-123 RD. ST. SURREY, B.C.
596-1422

CERTIFIED CORRECT ACCORDING TO
LAND REGISTRY OFFICE RECORDS
THIS 18TH DAY OF December, 1974.

Eric Kumpul
B.C.L.S.

