

PLAN of SUBDIVISION
of LOTS 11 to 14 inclusive
BLOCK 61, PLAN 1268
D. L. 343, CARIBOO DISTRICT

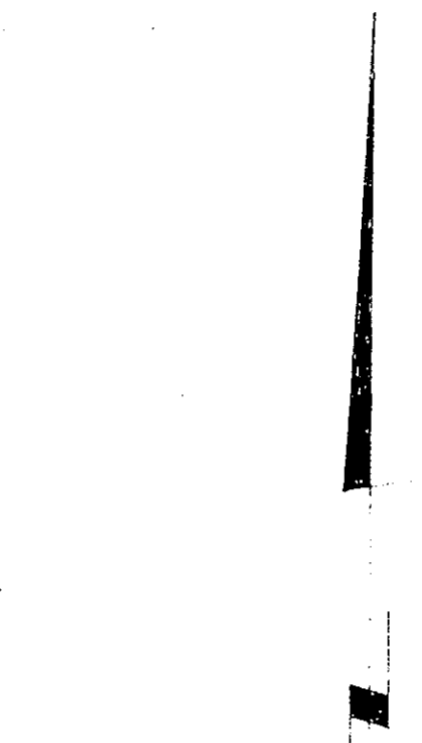
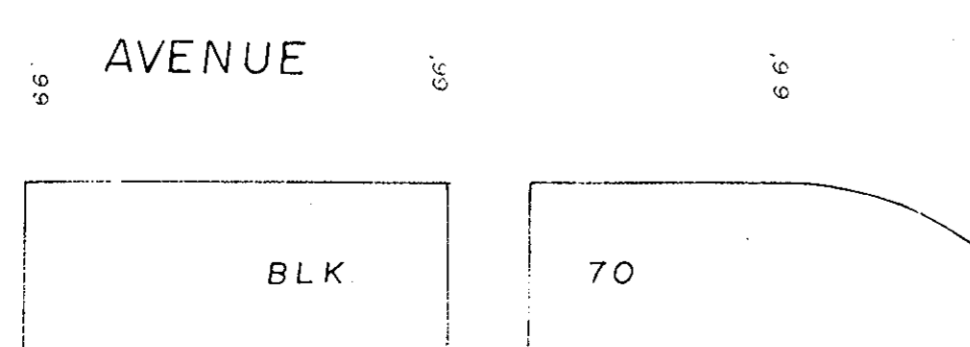
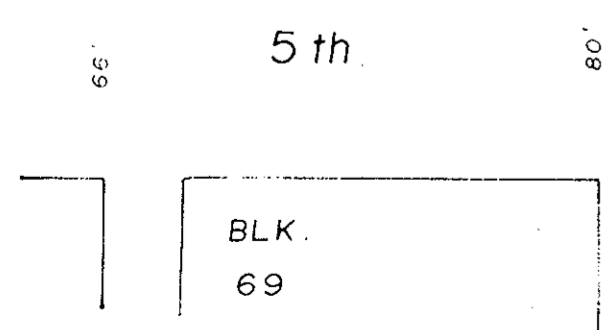
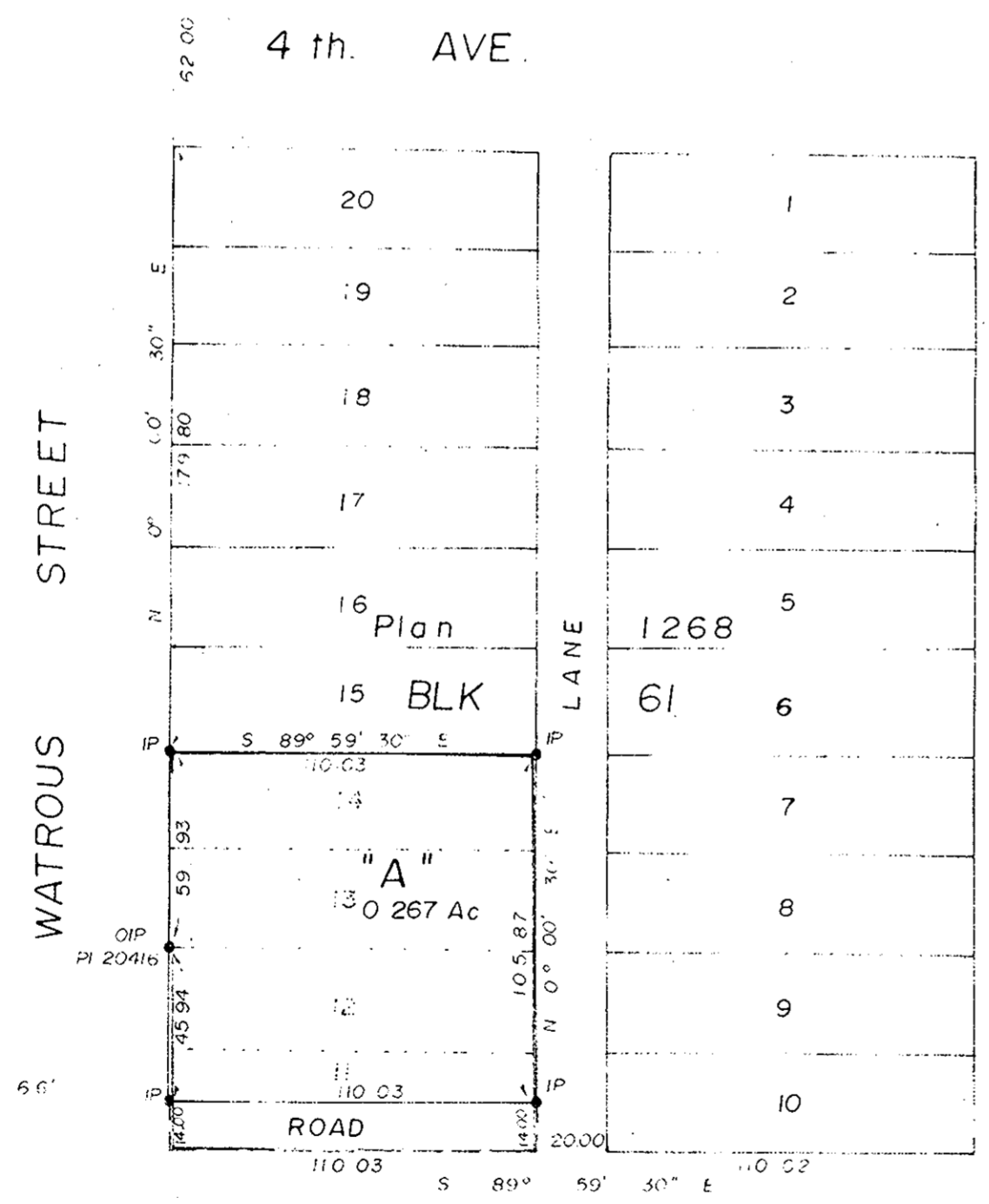
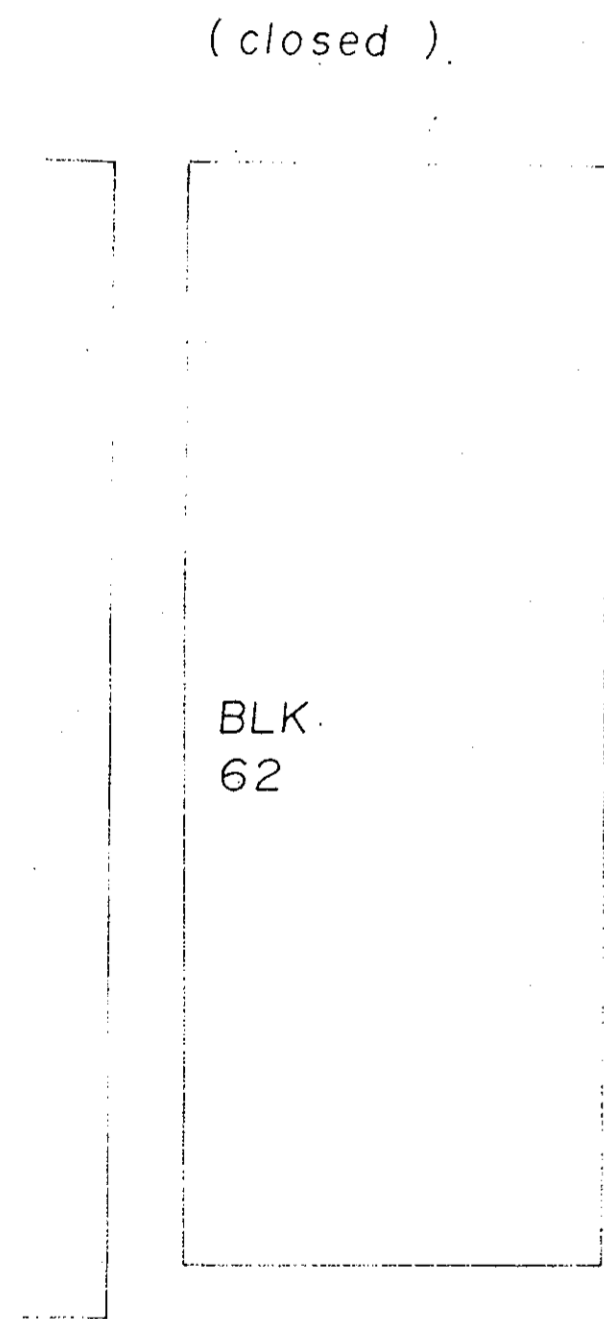
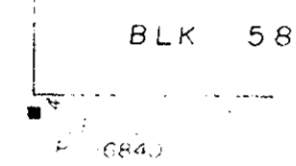
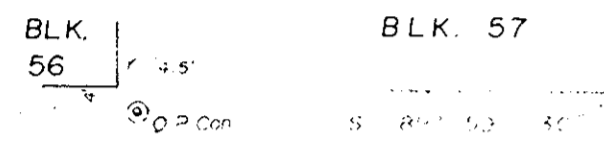
Scale: 1" = 50'

RECEIVED
MAR 13 1975

B.C. ASSESSMENT
AUTHORITY

PLAN No 21 983
Deposited in the Land Registry Office at
Prince George on the ... day of ... 19...

E.T. SCHOCLEY
Registrar



Bearings are astronomic and are derived from
PLAN 15840

- ⊙ P Con. Standard Concrete Post
- ⊙ P Rock Standard Rock Post
- PP Standard Pipe Post
- IP Standard Iron Post
- P' Wooden Post
- LP Lead Plug
- Denoting "Old"
- WT Denoting "Witness"
- CIP Capped Iron Post

Approved under the Land Registry Act
on the 27th day of FEB. 1975

LOT 4
Plan 17373

C. E. Obit
Approving Officer
City of Prince George

This plan lies within the FRASER
FORT GEORGE Regional District.

I, V. BARTELL of the CITY OF PRINCE GEORGE
British Columbia Land Surveyor, make oath and
say that I was present at and did personally
superintend the survey represented by this
plan and that the survey and plan are correct
The said survey was completed on
the 21 day of February 1975.

V. Bartell
V. BARTELL, B.C.L.S.

Sworn before me at PRINCE GEORGE
this 24 day of February 1975.

A Commissioner for taking of Affidavits
for British Columbia

Owner
Witness

Owner of Mortgage
Owner of Right to Purchase
Witness

McWilliam—Whyte—Goble & Associates
B.C. LAND SURVEYORS
PRINCE GEORGE | SMITHERS | KAMLOOPS
REF N: 7 5 0 3 5