

RECEIVED

MAR 13 1975

B.C. ASSESSMENT AUTHORITY

PLAN OF SUBDIVISION OF PART OF LOT 15, PLAN 19462 DISTRICT LOT 753 CARIBOO DISTRICT - BRITISH COLUMBIA

SCALE: 1" = 50'

NOTE: Bearings are astronomic, derived from the east boundary of Lot 15, Plan 19462.

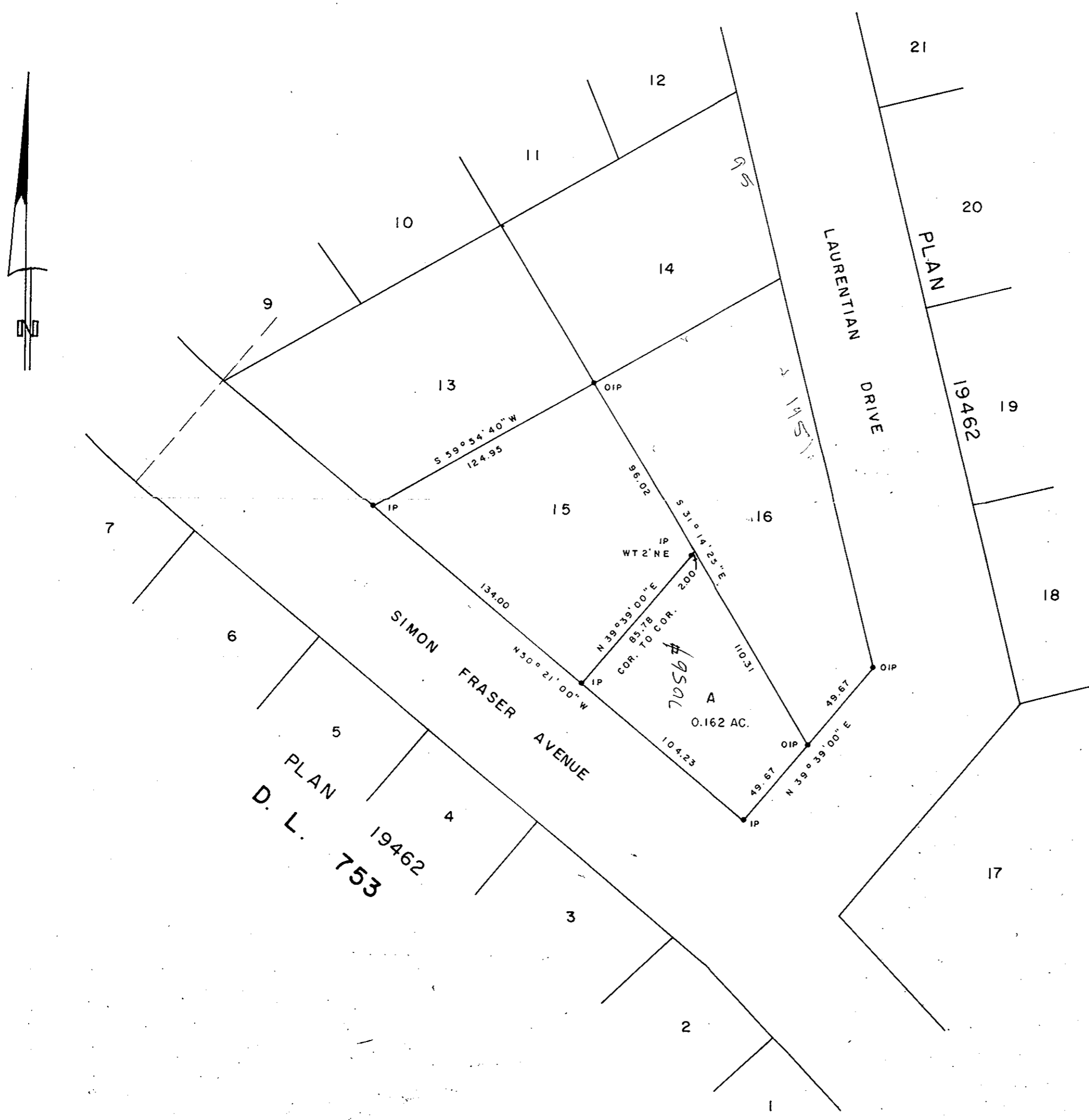
LEGEND: •OIP denotes an old iron pin found. •IP denotes an iron pin set. WT denotes witness.

PLAN No 21 971

Deposited in the Land Registry Office at Prince George, B.C. this 19th day of FEBRUARY, 1975.

E.T. SCHOOLEY Registrar

WT: G.



1975/2/19

THE HURON AND ERIE MORTGAGE CORPORATION

I, DONALD A. DUFFY of the City of Prince George, a British Columbia Land Surveyor, make oath and say that I was present at and did personally superintend the survey represented by this plan and that the survey and plan are correct. The said survey was completed on the 19th day of December, 1974.

[Signature] B.C.L.S.

Sworn before me this 6 day of JANUARY, 1975

[Signature] A Commissioner for Taking Affidavits for British Columbia.

Owner Thoma ... Harris
Witness E.T. Schooley
Owner Sylvia ... Harris
Witness E.T. Schooley

Approved under the Land Registry Act this 21st day of JAN, 1975.

[Signature] Approving Officer, City of Prince George

This plan lies within the Fraser-Fort George Regional District.

W.D. USHER & ASSOCIATES LAND SURVEYORS PRINCE GEORGE - B.C.