

PLAN N^o 21936
Deposited in the Land Registry
Office at Prince George, B.C. this
27. day of JANUARY, 1975
E.T. SCHOOLEY
Registrar

copy sent to
records April 9/75

PLAN OF SUBDIVISION OF
N. E. 1/4 DISTRICT LOT 2422
CARIBOO DISTRICT - BRITISH COLUMBIA

SCALE: 1" = 200'

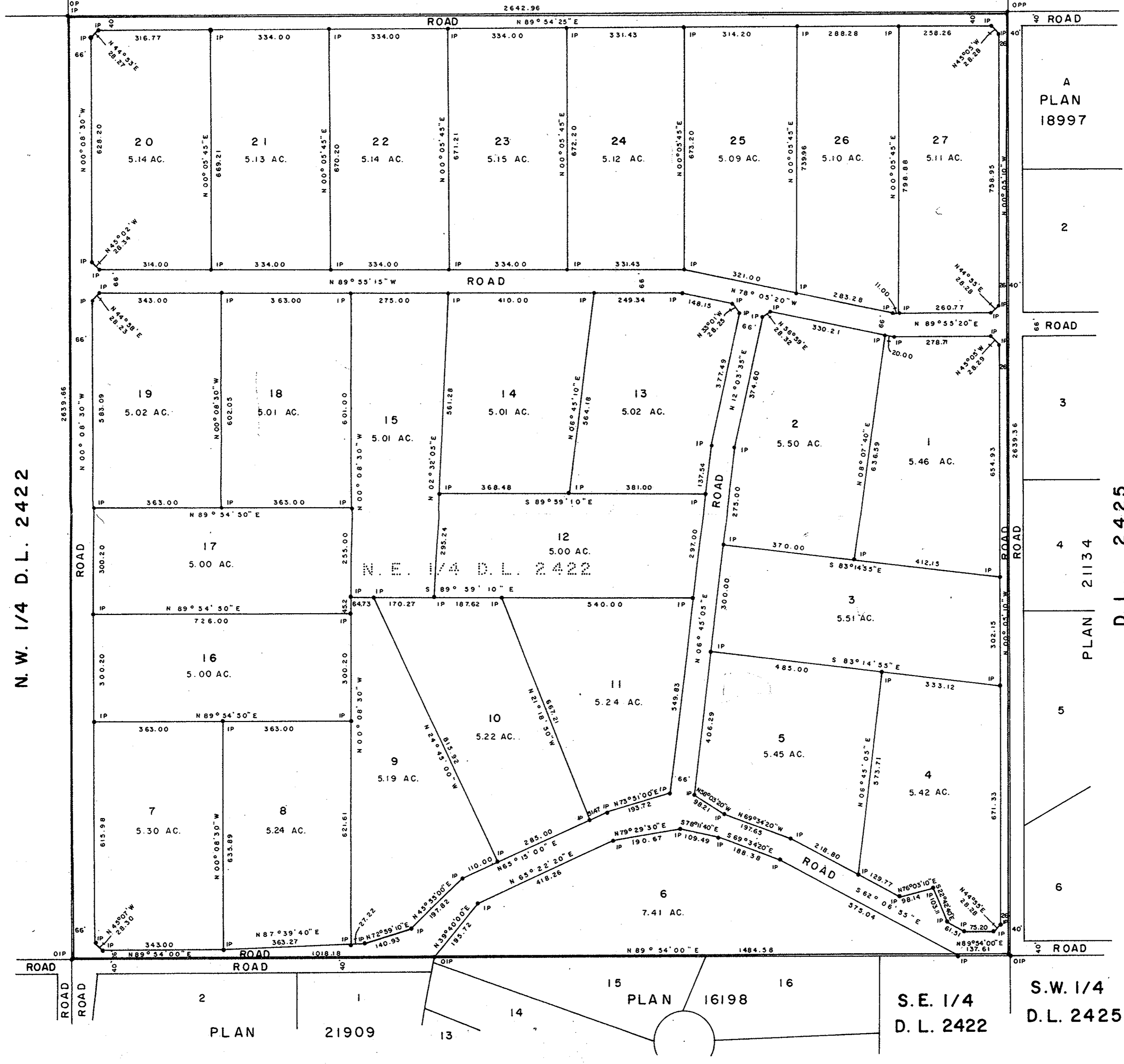
NOTE: Bearings are astronomic, derived from the south
boundary of N.E. 1/4 D.L. 2422, as shown on Plan 21909

LEGEND: *OPP denotes an old pipe post found.
o OP denotes an old wooden post found.
• OIP denotes an old iron pin found.
*IP denotes an iron pin set.

S.W. 1/4
D.L. 2421

S. E. 1/4 D. L. 2421

S.W. 1/4
D. L. 2426



N. W. 1/4 D. L. 2422

D. L. 2425

S. E. 1/4
D. L. 2422

S.W. 1/4
D. L. 2425

D. L. 2422

I, DONALD A. DUFFY of the City of Prince George,
a British Columbia Land Surveyor, make oath and say
that I was present at and did personally superintend
the survey represented by this plan and that the survey
and plan are correct. The said survey was completed
on the 29 day of Dec., 1974.

[Signature]
B.C.L.S.

Sworn before me this 24
day of JAN, 1975.
[Signature]
A Commissioner for taking Affidavits
for British Columbia.

[Signature]
Official Administrator, County of
Cariboo - Prince George, Administrator
of the Estate of Aina Lindstrom, deceased.

GLENVIEW ESTATES LTD.
[Signature]
President

Approved under the Land Registry Act
this 26 day of DECEMBER, 1974.

[Signature]
Approving Officer, Dept. of Highways

This plan lies within the Fraser-Fort George
Regional District.