

PLAN OF SUBDIVISION OF PART OF  
**S. E. 1/4 DISTRICT LOT 4047**  
 CARIBOO DISTRICT - BRITISH COLUMBIA

SCALE: 1" = 100'

NOTE: Bearings are astronomic, derived from the south boundary of Lots 23 and 24, Plan 19740.

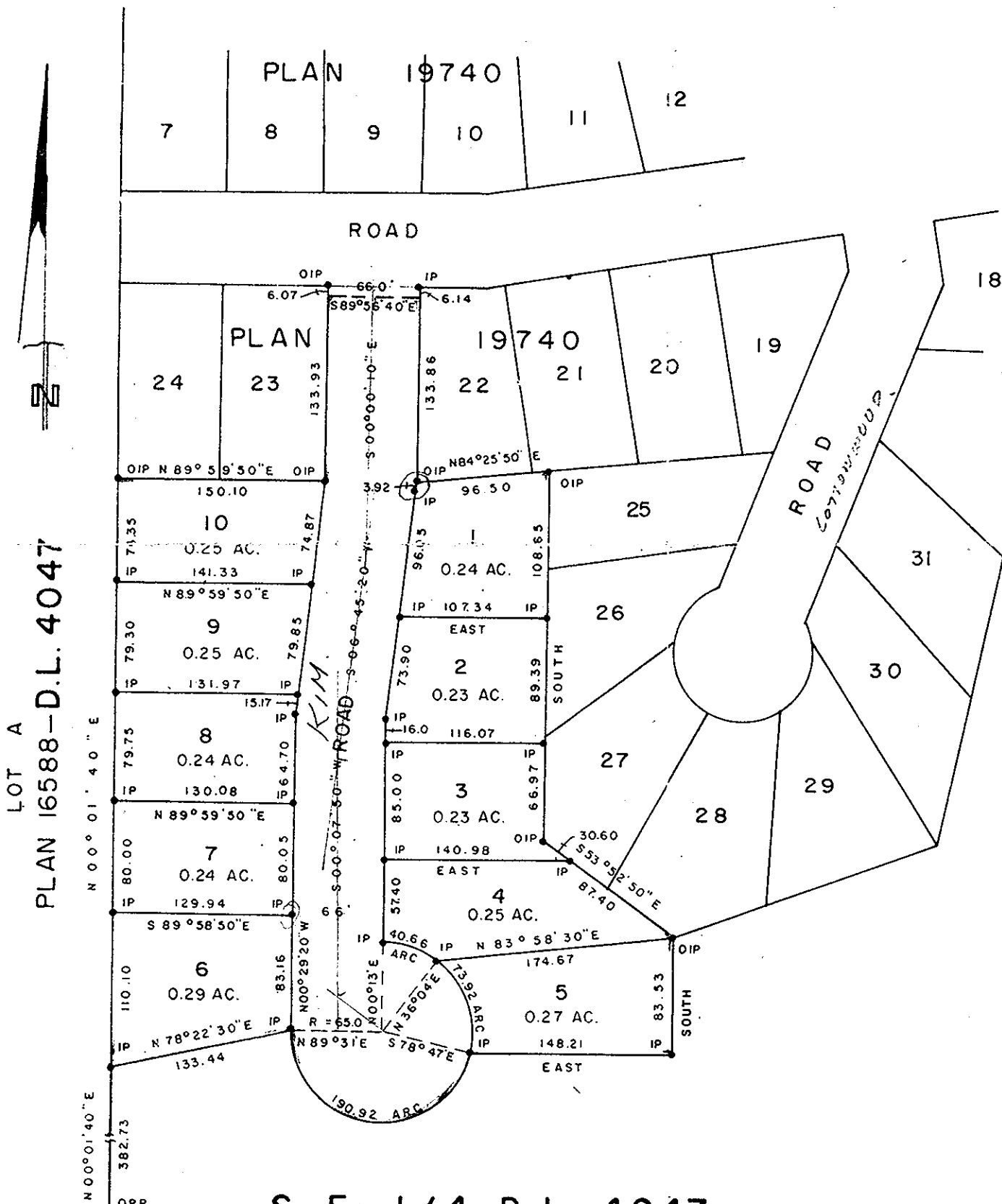
LEGEND: •OIP denotes an old iron pin found.  
 •IP denotes an iron pin set.  
 •OPP denotes an old pipe post found

PLAN No **21 914**

Deposited in the Land Registry Office at Prince George, B.C. this 13 day of JANUARY, 1975.

**E.T. SCHOOLEY**  
 Registrar

787: *ES*



*N 89° 59' 50" E  
 1-40  
 - 89-58-10*

LOT A  
 PLAN 16588-D.L. 4047

**S. E. 1/4 D. L. 4047**

N.W. 1/4 D.L. 4046 N.E. 1/4 D.L. 4046

I, DONALD A. DUFFY of the City of Prince George, a British Columbia Land Surveyor, make oath and say that I was present at and did personally superintend the survey represented by this plan and that the survey and plan are correct. The said survey was completed on the 8th day of October, 1974.

BIRCHWOOD HOLDINGS LTD.

Approved under the Land Registry Act this 27<sup>th</sup> day of DECEMBER, 1974.

*[Signature]*

*[Signature]*

Approving Officer, Dept. of Highways

Sworn before me this 31 day of DEC, 1974

*[Signature]*  
 A Commissioner for taking Affidavits for British Columbia.

This plan lies within the Fraser-Fort George Regional District.