

all 22012-015 to -025

PLAN OF SUBDIVISION OF PART OF
PARCEL A, PLAN 20588
DISTRICT LOT 2422
CARIBOO DISTRICT-BRITISH COLUMBIA

SCALE: 1" = 200'

NOTE: Bearings are astronomic, derived from the west
boundary of S.E. 1/4 D.L. 2422, as shown on Plan
20393.

LEGEND: • OIP denotes an old iron pin found.
• IP denotes an iron pin set.

Copy sent to records
Sept 6/75

PLAN N^o 21909
Deposited in the Land Registry
Office at Prince George, B.C. this
9th day of JANUARY, 1975

E.T. SCHOOLEY
Registrar

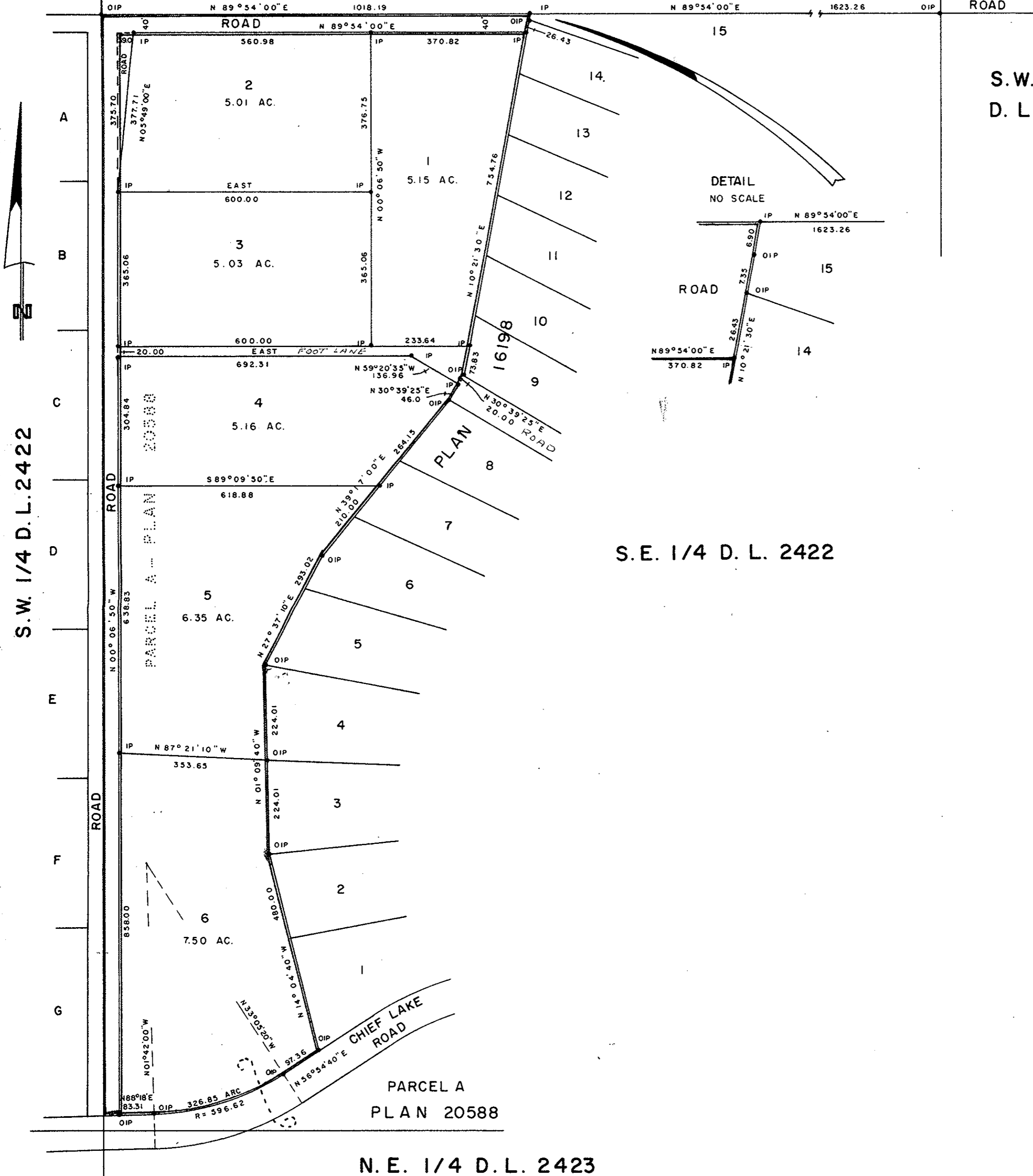
N.W. 1/4
D.L. 2422

N.E. 1/4 D.L. 2422

6
PLAN
21134
ROAD

S.W. 1/4
D.L. 2425

S.E. 1/4 D.L. 2422



I, DONALD A. DUFFY of the City of Prince George,
a British Columbia Land Surveyor, make oath and say
that I was present at and did personally superintend
the survey represented by this plan and that the survey
and plan are correct. The said survey was completed
on the 12 day of DEC, 1974.

[Signature]
B.C.L.S.

GLENVIEW ESTATES LTD.

[Signature]
President

Sworn before me this 31
day of DEC, 1974

[Signature]
A Commissioner for taking Affidavits
for British Columbia.

Approved under the Land Registry Act
this 30th day of DECEMBER, 1974.

[Signature]
Approving Officer, Dept. of Highways.

This plan lies within the Fraser-Fort George
Regional District.

W. D. USHER & ASSOCIATES
LAND SURVEYORS
PRINCE GEORGE - B.C.