

RECEIVED
FEB 10 1975

B.C. ASSESSMENT
AUTHORITY

PLAN N^o 21 877

Deposited in the Land Registry
Office at Prince George, B.C. this
18 day of DECEMBER, 1974.

E.T. SCHOOLEY
Registrar

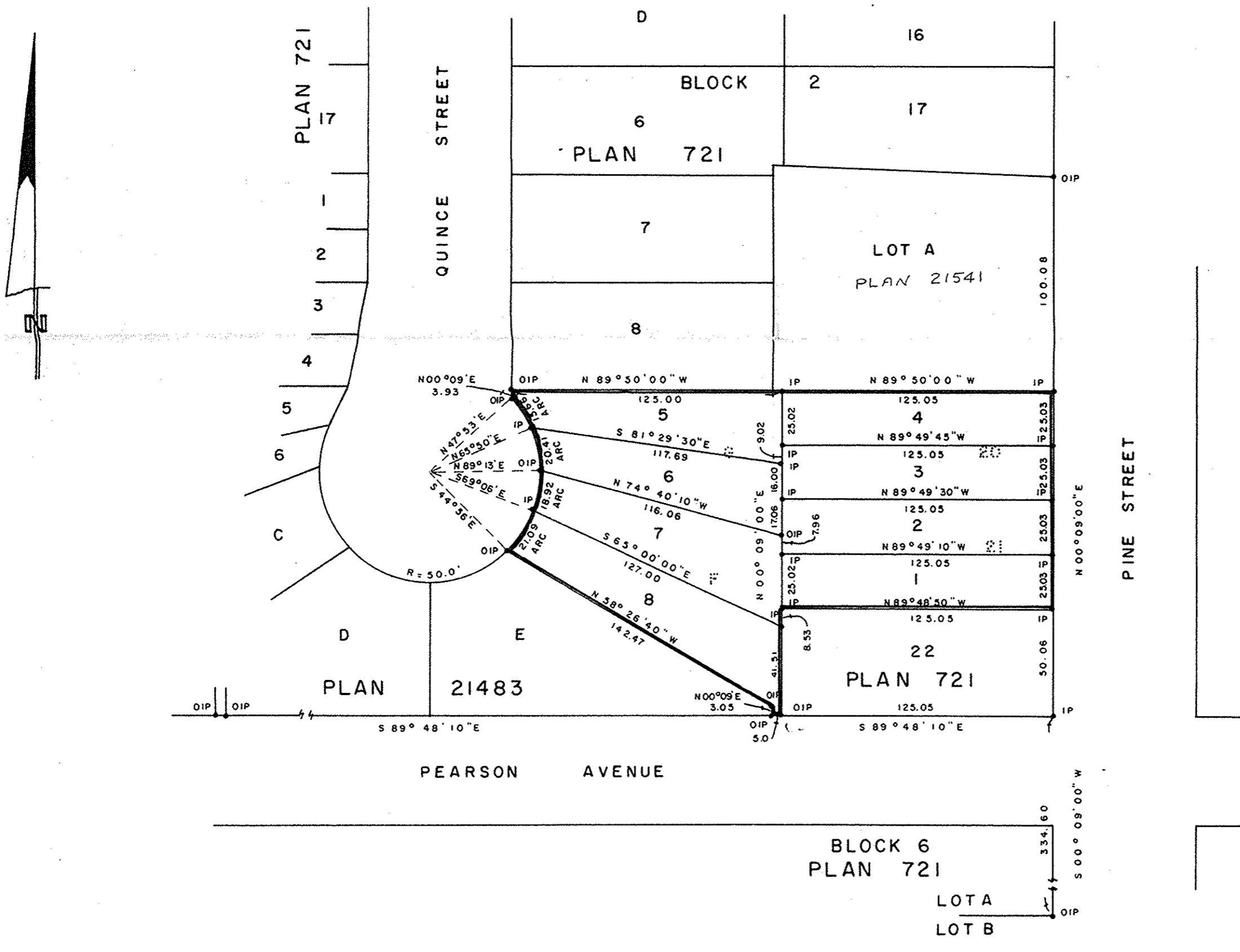
PLAN OF SUBDIVISION OF
LOTS 20 & 21, BLOCK 2, PLAN 721
LOTS F & G, PLAN 21483
DISTRICT LOT 1426
CARIBOO DISTRICT - BRITISH COLUMBIA

SCALE: 1" = 50'

NOTE: Bearing are astronomic, derived from the south
boundary of Lots D & E, Plan 21483.

LEGEND: • OIP denotes an old iron pin found.
• IP denotes an iron pin set.

Copy sent to
records Feb 18/75



I, DONALD A. DUFFY of the City of Prince George,
a British Columbia Land Surveyor, make oath and say
that I was present at and did personally superintend
the survey represented by this plan and that the survey
and plan are correct. The said survey was completed
on the 18th day of October, 1974.

[Signature]
B.C.L.S.

Sworn before me this 28
day of October, 1974.

[Signature]
A Commissioner for taking Affidavits
for British Columbia.

Owner *[Signature]*
Witness *[Signature]*

CREST HOMES LTD.

[Signature]

Approved under the Land Registry Act
this 28th day of OCT., 1974.

[Signature]
Approving Officer, City of Prince George

This plan lies within the Fraser-Fort George
Regional District.