

PLAN OF RIGHT-OF-WAY THROUGH  
LOT 2, PLAN 21 853  
DISTRICT LOT 2424  
CARIBOO DISTRICT - BRITISH COLUMBIA

SCALE: 1" = 100'

NOTE: Bearings are astronomic, derived from the west  
boundary of Lot 2, as shown on Plan 21 853

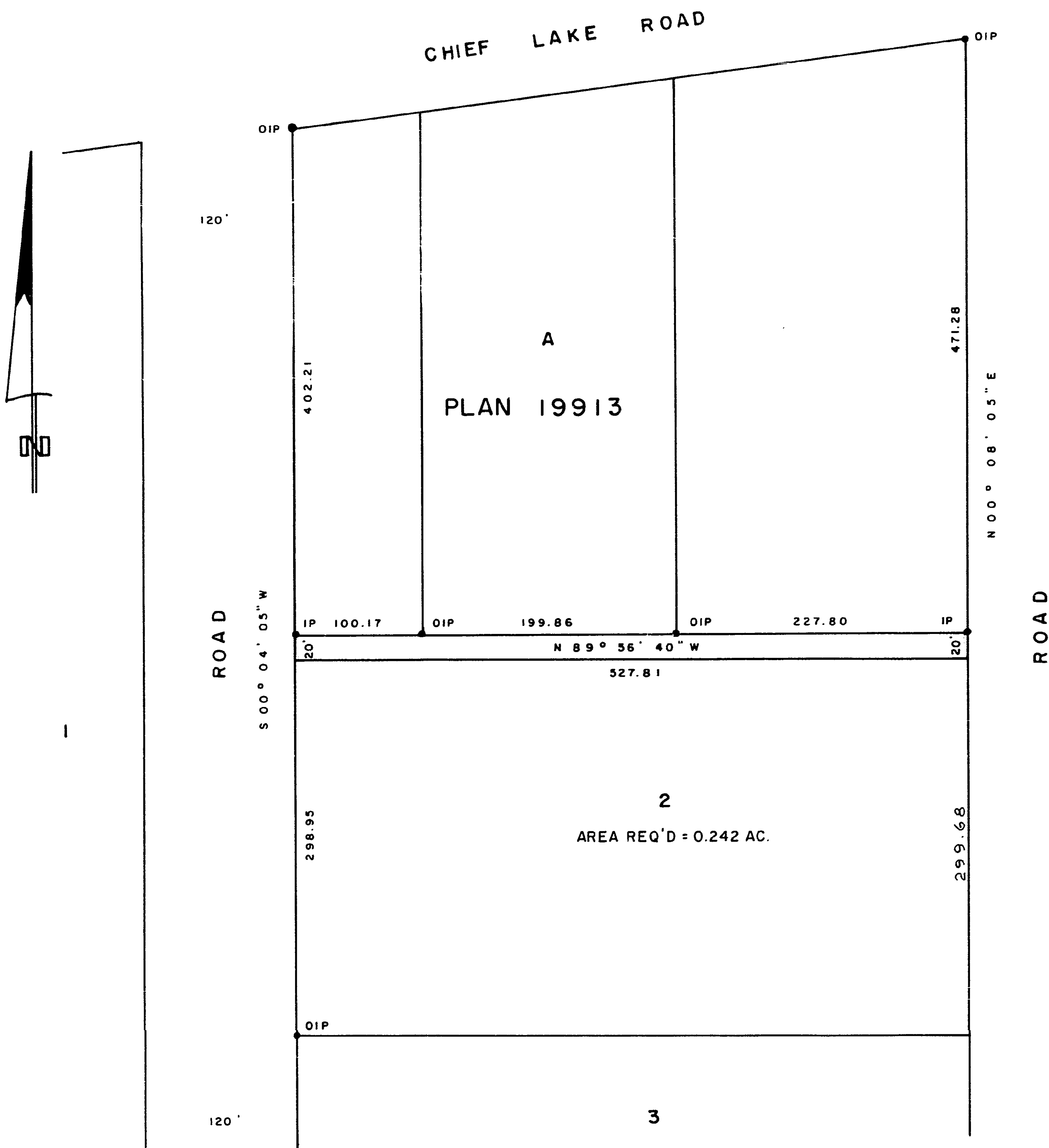
LEGEND: •OIP denotes an old iron pin found.  
•IP denotes an iron pin set.

PLAN N<sup>o</sup> 21 866

Deposited in the Land Registry  
Office at Prince George, B.C. this  
12. day of DECEMBER, 1974

E.T. SCHOOLEY  
Registrar

per: G.



D. L. 2424

I, DONALD A. DUFFY of the City of Prince George,  
a British Columbia Land Surveyor, make oath and say  
that I was present at and did personally superintend  
the survey represented by this plan and that the survey  
and plan are correct. The said survey was completed  
on the 7<sup>TH</sup> day of NOV., 1974

*[Signature]*  
B.C.L.S.

Sworn before me this 27<sup>TH</sup>  
day of Nov., 1974

*[Signature]*  
A Commissioner for taking Affidavits  
for British Columbia.

This plan lies within the Fraser-Fort George  
Regional District.

W. D. USHER & ASSOCIATES  
LAND SURVEYORS  
PRINCE GEORGE - B.C.  
4887 B