

PLAN OF RIGHT-OF-WAY THROUGH
 LOTS 6, 7 & 9, PLAN 21 853
 DISTRICT LOT 2424
 CARIBOO DISTRICT— BRITISH COLUMBIA

SCALE: 1" = 200'

NOTE: Bearings are astronomic, derived from the west boundary of Lots 7 & 9, as shown on Plan 21 853

LEGEND: •OIP denotes an old iron pin found.
 •IP denotes an iron pin set.

PLAN No 21 854

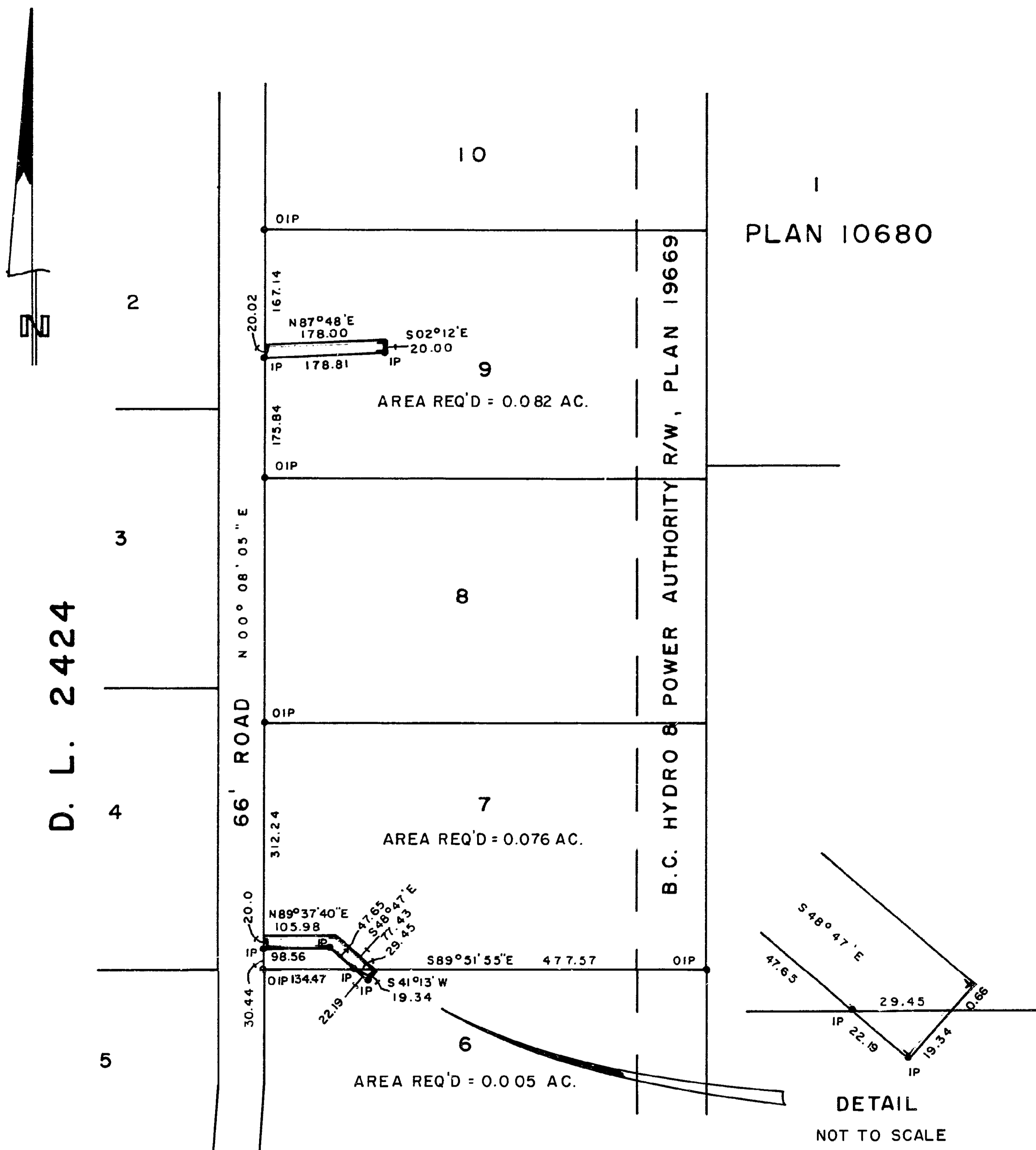
Deposited in the Land Registry Office at Prince George, B.C. this 12. day of DECEMBER, 1974.

E.T. SCHOOLEY
 Registrar

rev: *ES*

BOOK OF REFERENCE

PARCEL	AREA REQ'D
LOT 6, PLAN , D.L. 2424	0.005 ACRE
LOT 7, PLAN , D.L. 2424	0.076 ACRE
LOT 9, PLAN , D.L. 2424	0.082 ACRE



I, DONALD A. DUFFY of the City of Prince George, a British Columbia Land Surveyor, make oath and say that I was present at and did personally superintend the survey represented by this plan and that the survey and plan are correct. The said survey was completed on the 7th day of NOV., 1974.

[Signature]
 D.A.D. S.C.L.S.

Sworn before me this 3 day of DECEMBER, 1974

[Signature]
 A Commissioner for taking Affidavits for British Columbia.

This plan lies within the Fraser-Fort George Regional District.