

PLAN OF SUBDIVISION
OF LOTS 16 - 24 INCLUSIVE
AND ASSIGNED PARCEL "A", PLAN B-7514
BLOCK 195, PLAN 1268
DISTRICT LOT 343
CARIBOO DISTRICT

SCALE: 1" = 100'

PLAN NO.: 21843

DEPOSITED IN THE LAND REGISTRY OFFICE
AT PRINCE GEORGE THIS 2 DAY OF DEC 1974.

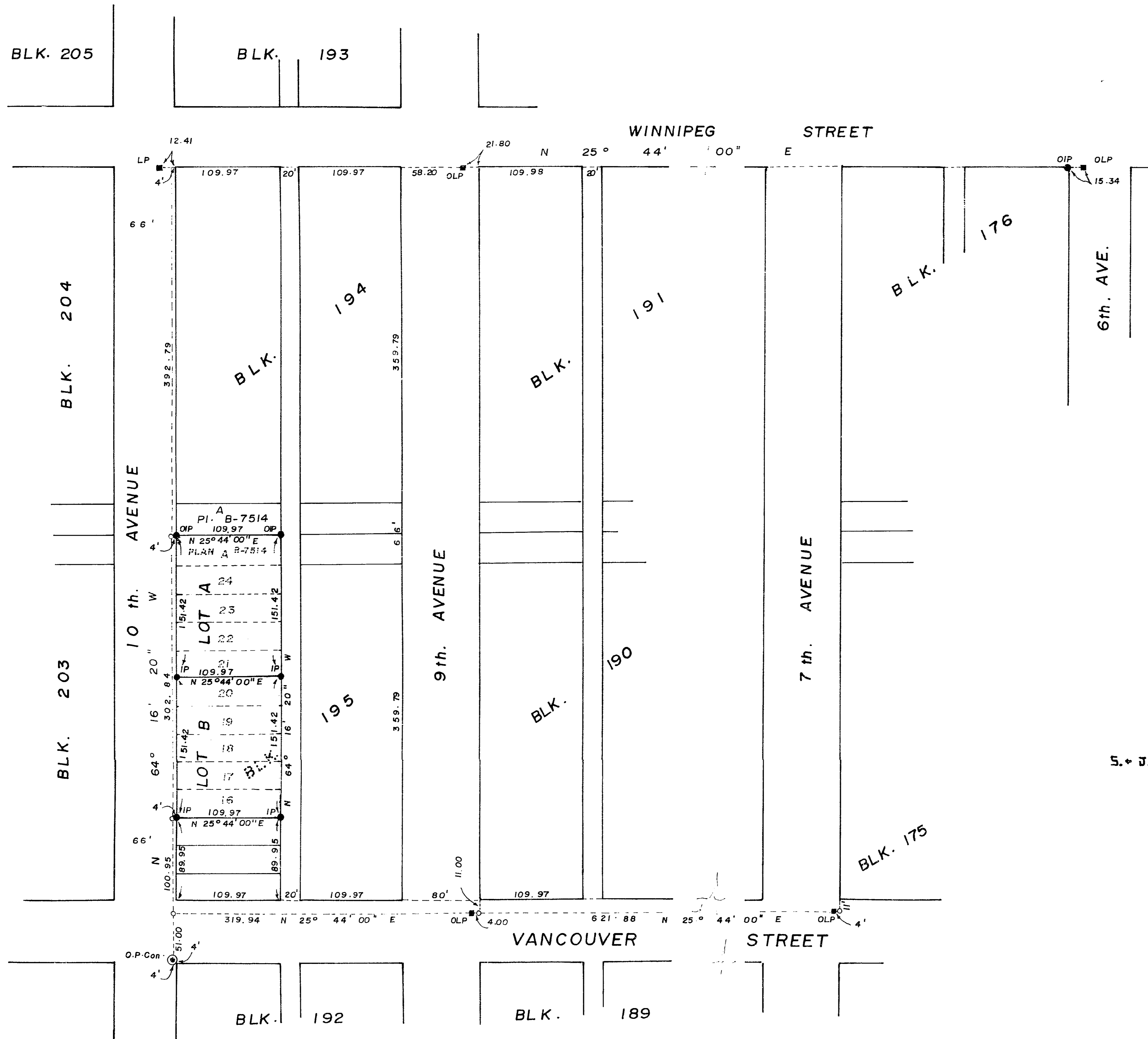
E. J. SCHOOLEY
REGISTRAR

CANADA PERMANENT MORTGAGE CORPORATION

PER: *[Signature]*
AUTHORIZED OFFICER

WARDLEY REALTY LTD.

PER: *[Signature]*
DIRECTOR



Bearings are astronomic, derived from
Easterly Bdy. VANCOUVER STREET,
shown as N 25° 44' 00" E on
PLAN 1268

- O.P.Con. ----- Old Concrete Post.
- I.P. ----- Standard Iron Post.
- L.P. ----- Lead Plug.
- ----- Denoting "Old"

I, D. Keown of the City of Prince George
British Columbia Land Surveyor make oath
and say that I was present at and did
personally superintend the survey represented
by this plan and that the survey and plan
are correct.

The said survey was completed on
the 22nd day of May 1974

[Signature]
D. Keown, B.C.L.S.

Approved under the Land Registry Act
on the 2nd day of DEC 1974

[Signature]
City Engineer
City of Prince George

S. J. CONSTRUCTION LTD. Director

PER: *[Signature]* Director

Owner: *[Signature]* Director

Witness

Sworn before me at Prince George
this 31st day of May 1974

[Signature]
A Commissioner for taking affidavits
for British Columbia

THIS PLAN LIES WITHIN THE FRASER -
FORT GEORGE REGIONAL DISTRICT.

Mc. WILLIAM - WHYTE - GOBLE & ASSOCIATES
B. C. LAND SURVEYORS
PRINCE GEORGE - KAMLOOPS - SMITHERS

REF. NO.: 74 136