

PLAN OF SUBDIVISION OF
 CLOSED PART OF TAYLOR DRIVE PLAN I6739
 AND PART OF BLOCK W PLAN B-3783
 DISTRICT LOT 343
 CARIBOO DISTRICT - BRITISH COLUMBIA

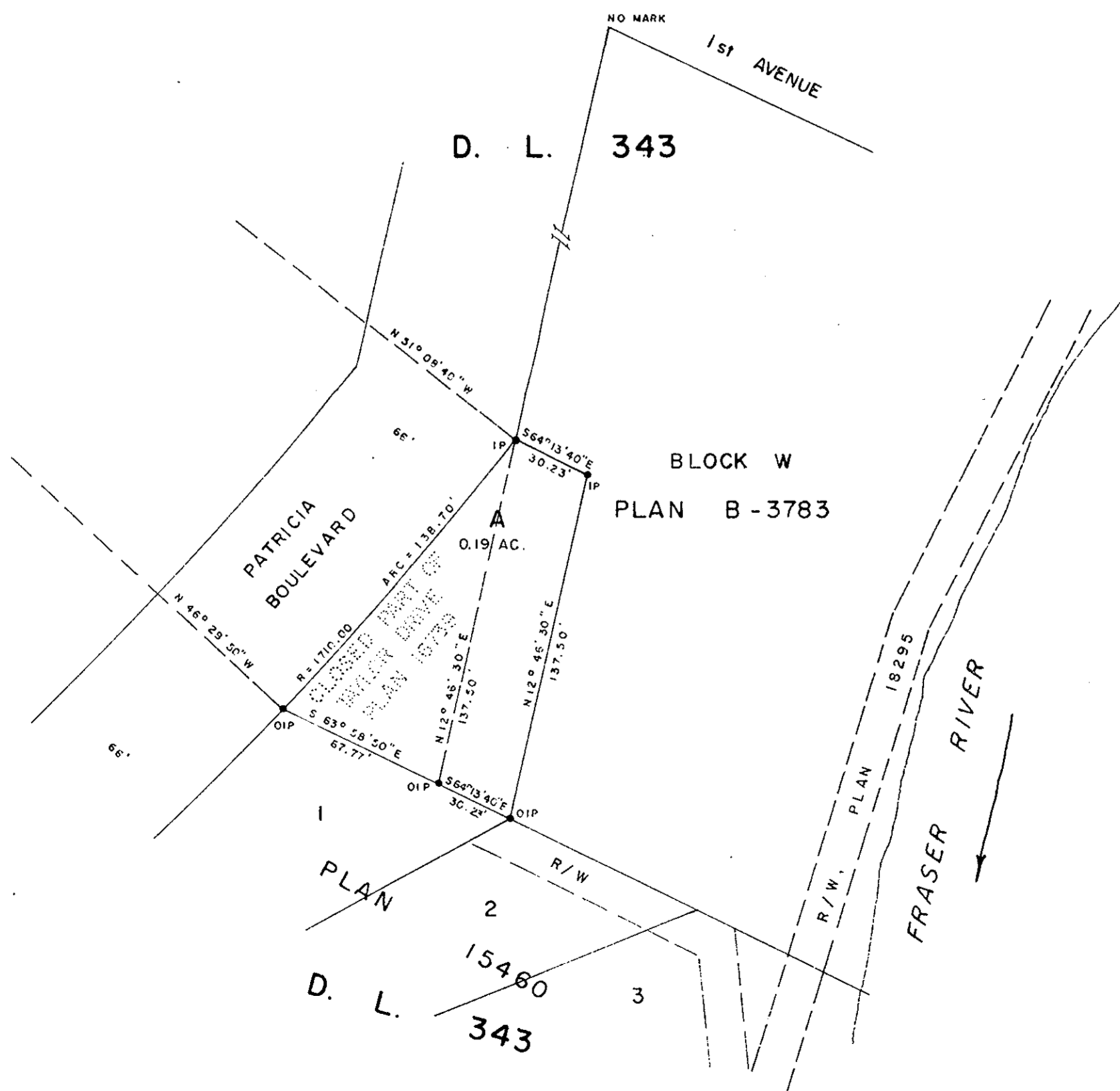
PLAN N^o **21834**
 Deposited in the Land Registry
 Office at Prince George, B.C. this
 27 day of Nov., 1974

E.T. Schooley
 Registrar for B.C.

SCALE: 1" = 50'

NOTE: Bearings are astronomic, derived from the
 North Boundary of Lot 1, Plan 15460.

LEGEND: * OIP denotes an old iron pin found.
 • IP denotes an iron pin placed on this survey.



MARJO VENTURES LTD.

Sheela Pres

I, DONALD A. DUFFY of the City of Prince George, a British Columbia Land Surveyor, make oath and say that I was present at and did personally superintend the survey represented by this plan and that the survey and plan are correct. The said survey was completed on the 26th day of JULY, 1974.

[Signature]
 B.C.L.S.

Sworn before me this 27th day of August, 1974

[Signature]
 A Commissioner for Taking Affidavits
 for British Columbia.

INDUSTRIAL DEVELOPMENT BANK
 per:

[Signature]
 DEPUTY SECRETARY
[Signature]
 SUPERINTENDENT, METHODS &
 PROCEDURES

NIAGARA REALTY OF CANADA LIMITED

[Signature]
 VICE-PRESIDENT
[Signature]
 ASSISTANT SECRETARY

Reapproved this 20th day of
 November 1974 [Signature]
 Approved under the Land Registry Act
 this 20th day of August, 1974

[Signature]
 Approving Officer, City of Prince George.

This plan lies within the Fraser-Fort George
 Regional District.