

PLAN OF SUBDIVISION OF PART OF
S.E. 1/4 OF DISTRICT LOT 754
CARIBOO DISTRICT - BRITISH COLUMBIA

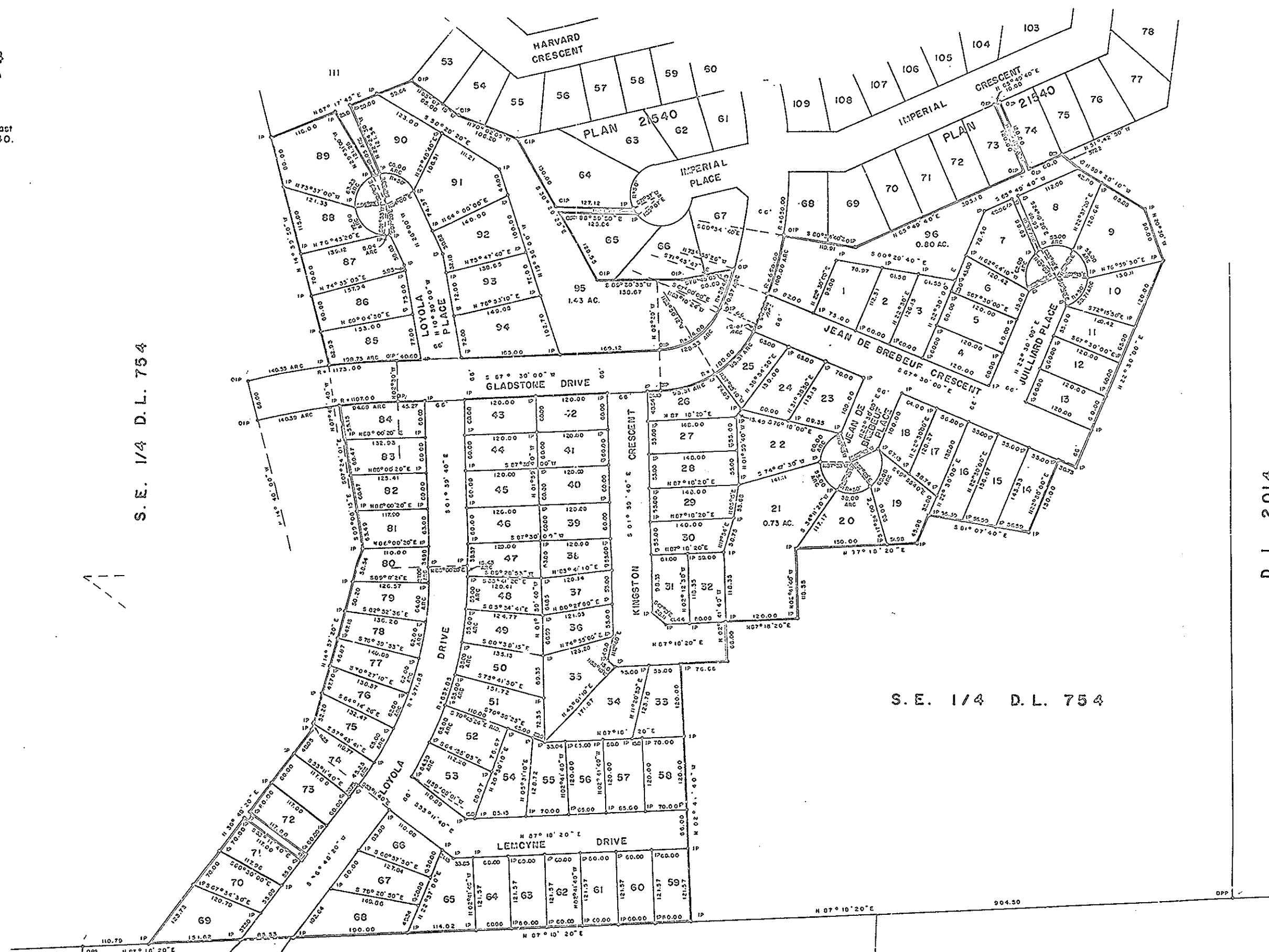
SCALE: 1" = 100'

NOTE: Bearings are astronomic, derived from the east boundaries of Lots 64 & 65, Plan 21540.

LEGEND: *OPP denotes an old pipe post found.
*OIP denotes an old iron pin found.
*IP denotes an iron pin set.

PLAN No. **21798**
Deposited in the Land Registry
Office at Prince George, B.C. this
12th day of Nov, 1932

E. T. Sawley
Registrar



S. E. 1/4 D. L. 754

S. E. 1/4 D. L. 754

D. L. 2014

I, DONALD A. DUFFY of the City of Prince George, a British Columbia Land Surveyor, do hereby certify and say that I was present at and did personally supervise the survey represented by this plan and that the survey and plan are correct. The said survey was completed on the 23 day of Sept, 1932.

[Signature]
Sworn before me this 23 day of Sept, 1932.
[Signature]
A Commissioner for taking Affidavits for British Columbia.

HEIGHTS LAND DEVELOPMENT CO. LTD.

[Signature]
[Signature]

PLAN 9902

D. L. 2013

Approved under the Land Registry Act this 20 day of Oct, 1932.

[Signature]
Approving Officer, Dept. of Highways

This plan lies within the Fraser-Fort George Regional District.

W.D. USHER & ASSOCIATES
LAND SURVEYORS
PRINCE GEORGE - B. C.
C.C. 3502 A

