

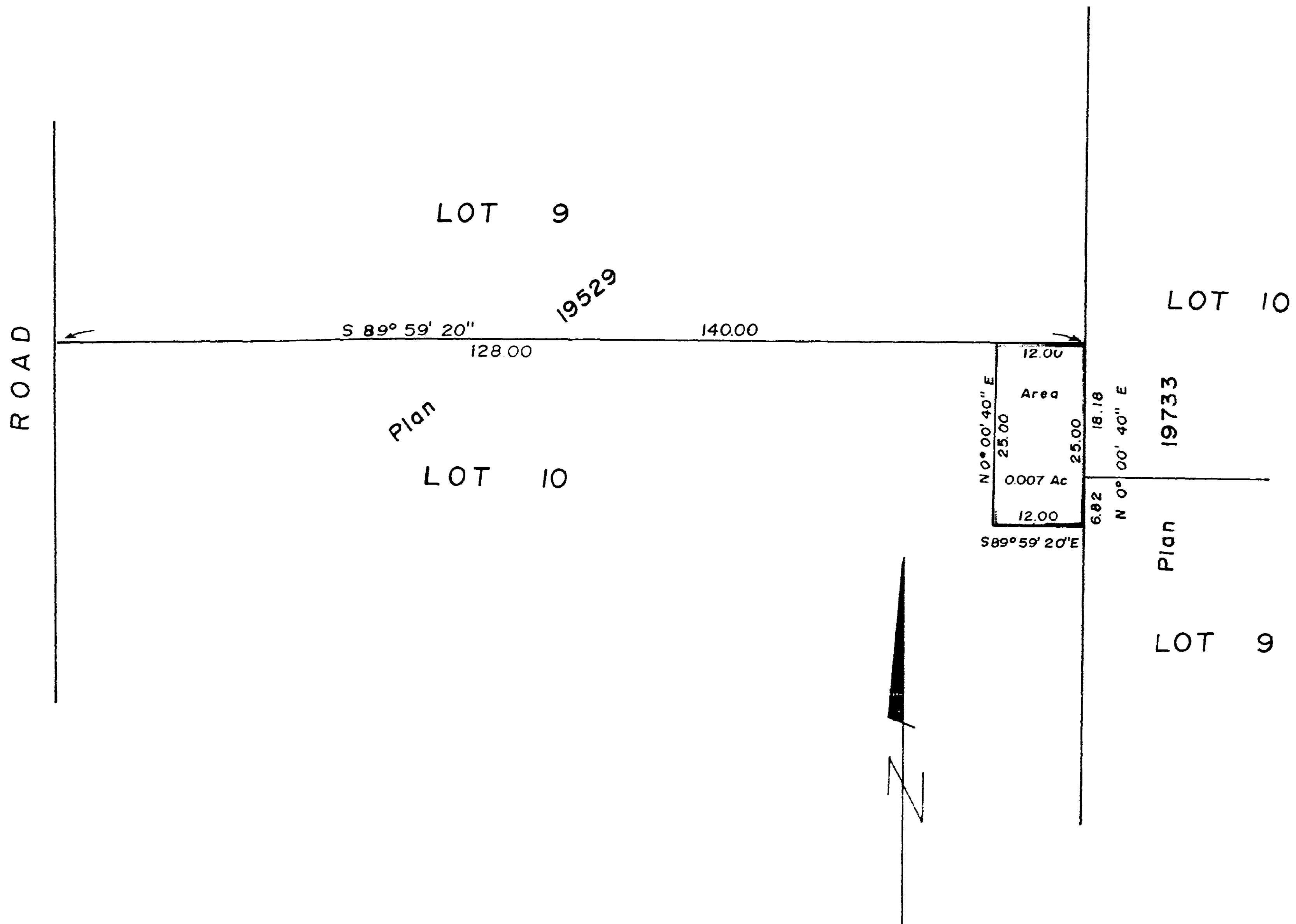
EXPLANATORY PLAN  
of EASEMENT in LOT 10,  
PLAN 19529, D.L. 2101,  
CARIBOO DISTRICT

PLAN NO.: 21768

Deposited in the Land Registry Office at  
Prince George this 24 day of OCT. 1974

*E.T. Schooley*  
Registrar  
*Per B.*

SCALE: 1" = 20'



THIS PLAN LIES WITHIN THE FRASER-FORT GEORGE REGIONAL DISTRICT.

BOOK OF REFERENCE	
DESCRIPTION	AREA
LOT 10, PLAN 19529	0.007 Ac

CERTIFIED CORRECT  
According to LAND REGISTRY RECORDS  
This 9<sup>th</sup> day of October 1974

*Dale Keown*  
DALE KEOWN B.C.L.S.

McWILLIAM, WHYTE, GOBLE & ASSOCIATES  
B. C. LAND SURVEYORS  
PRINCE GEORGE - KAMLOOPS - SMITHERS  
REF. NO.: 74275

