

RECEIVED

DEC 5 1974

CITY ASSESSOR
PRINCE GEORGE

PLAN N^o 21751

Deposited in the Land Registry
Office at Prince George, B.C. this
16 day of OCT., 1974

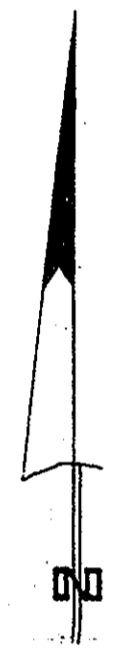
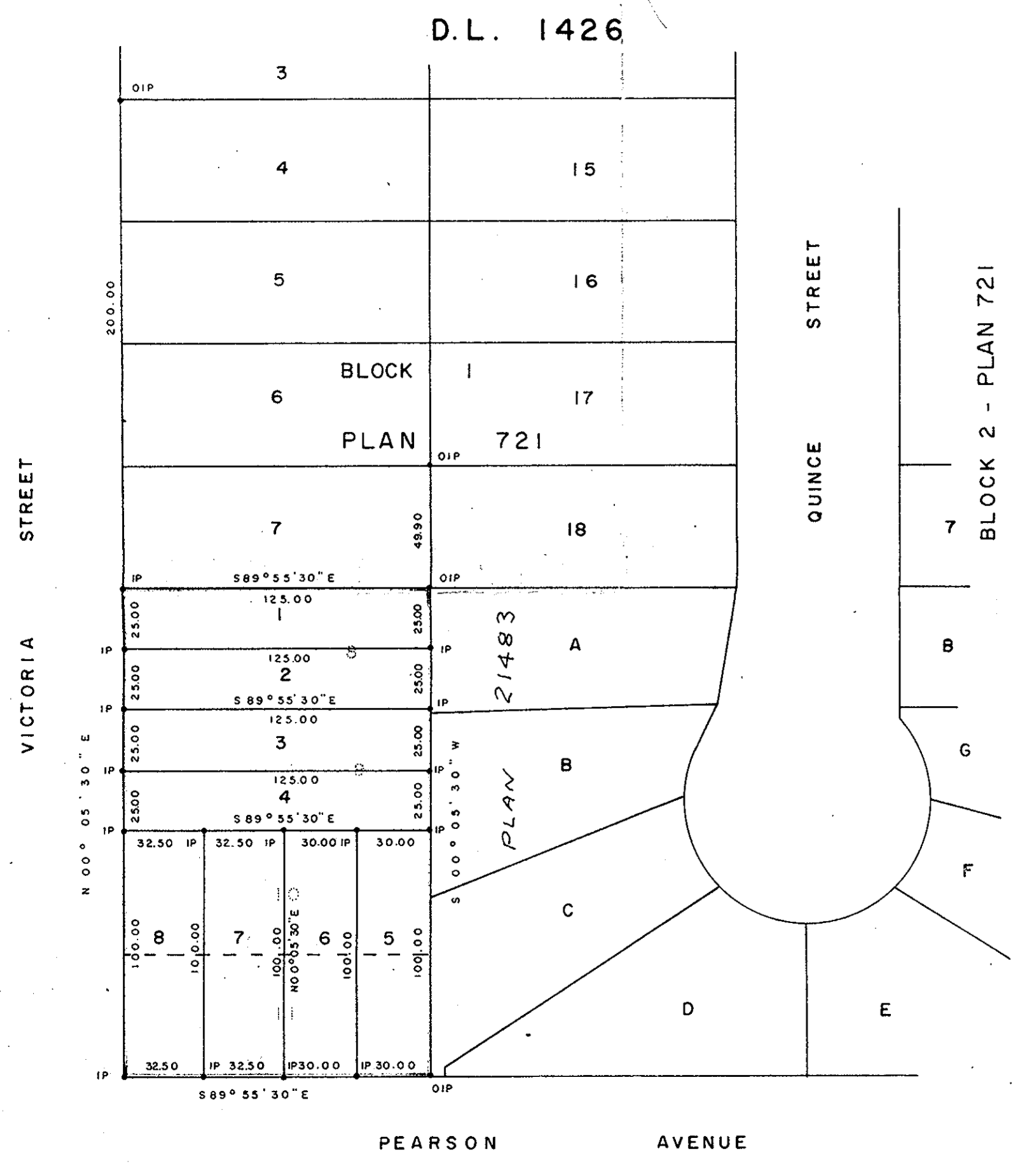
Registrar E. T. Schooley

PLAN OF SUBDIVISION OF
LOTS 8, 9, 10 & 11, BLOCK 1, PLAN 721
DISTRICT LOT 1426
CARIBOO DISTRICT - BRITISH COLUMBIA

SCALE: 1" = 50'

NOTE: Bearings are astronomic derived from the west
boundary of Lots A to C, Plan 21483

LEGEND: • OIP denotes an old iron pin found.
• IP denotes an iron pin set.



I, DONALD A. DUFFY of the City of Prince George, a British Columbia Land Surveyor, make oath and say that I was present at and did personally superintend the survey represented by this plan and that the survey and plan are correct. The said survey was completed on the 25th day of Sept., 1974.

Donald A. Duffy
B.C.L.S.

Sworn before me this 9 day of OCT., 1974

Commissioner
A Commissioner for taking Affidavits
for British Columbia.

ALEZA ENTERPRISES LIMITED

J. J. Pearson
L. J. ...

Saral East Bellamy
Owner

C. E. ...
Witness

Approved under the Land Registry Act
this 9th day of OCT., 1974

C. E. ...
Approving Officer, City of Prince George

This plan lies within the Fraser-Fort George
Regional District.